

## ASSEMBLY INSTRUCTIONS

# MERCEDES SPRINTER 170" EXTENDED CARGO

This document presents the detailed procedures for assembling Legend Fleet components and accessories.

Customers can make use these step-by-step procedures and easily assemble without major difficulty.



# LEGEND

---

## FLEET SOLUTIONS

---

519 688 1043  
[customercare@legendfleet.com](mailto:customercare@legendfleet.com)

56957 HWY 3 WEST,  
TILLSONBURG,  
ON N4G 4G8.

# Table of Contents

Wheel Well Cover.....3

Floor.....4

Floor Sills .....8

Wall Liners .....10

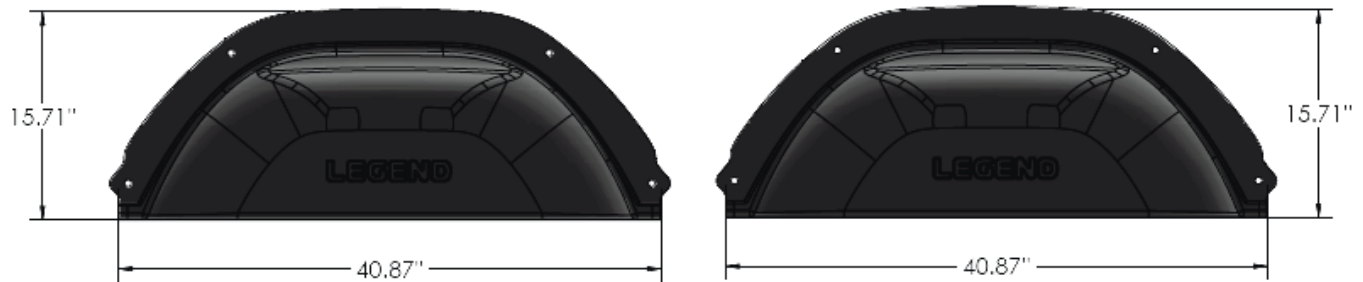
Ceiling Liners.....13

Top Sills.....17

Door Liners .....20

# Wheel Well Cover

## Parts and Hardware



DRIVER SIDE'S WHEEL WELL COVER

PASSENGER SIDE'S WHEEL WELL COVER

8 x

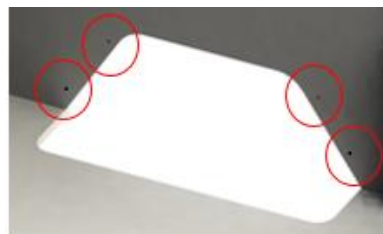


PUSH-IN RIVET

## Assembly Instructions

**Floor and Wall liner must be installed after the installation of Wheel well covers**

**Step 1:** Place the **Driver side** and **Passenger side** wheel well covers in the vehicle, as shown below.



"positioning of Passenger side WWC"



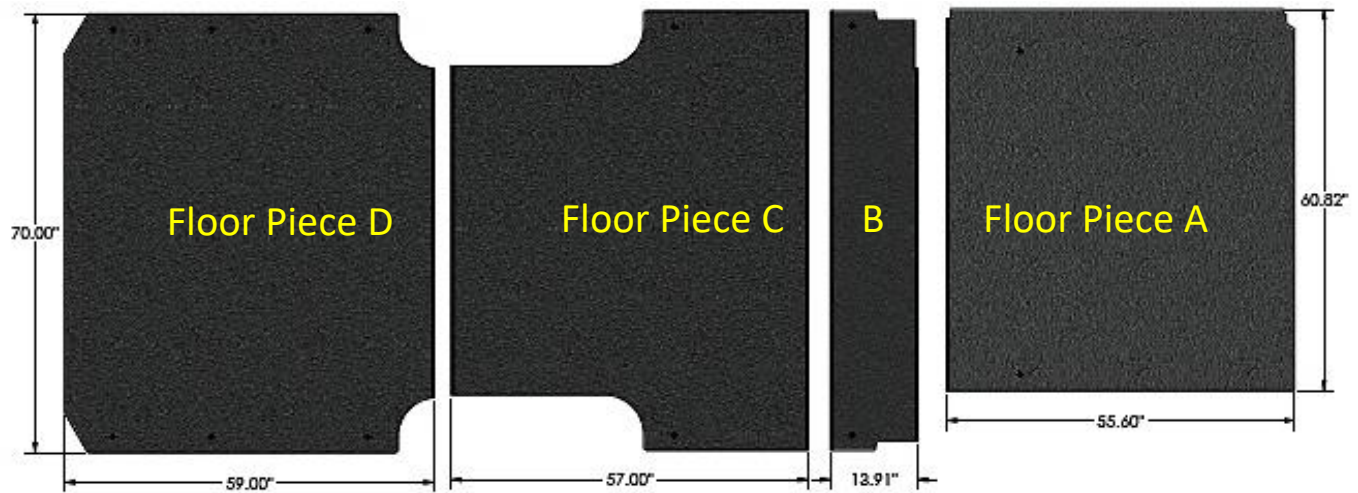
"positioning of Driver side WWC"

8 x

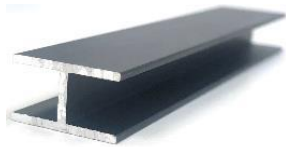


# Floor

## Parts and Hardware

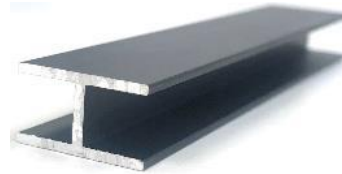


1 x



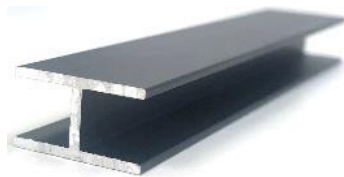
FIRST RAIL JOINT (59.35")

1x



SECOND RAIL JOINT (70.00")

1x



THIRD RAIL JOINT (52.42")

12 x



M8 BOLT

12 x



M8 FLAT WASHER

1 x



GLUE

## Assembly instructions

**Remove the following items before floor installation:**

1. OEM Plastic Trim
2. D-Rings
3. Tie-Downs
4. Other installed parts

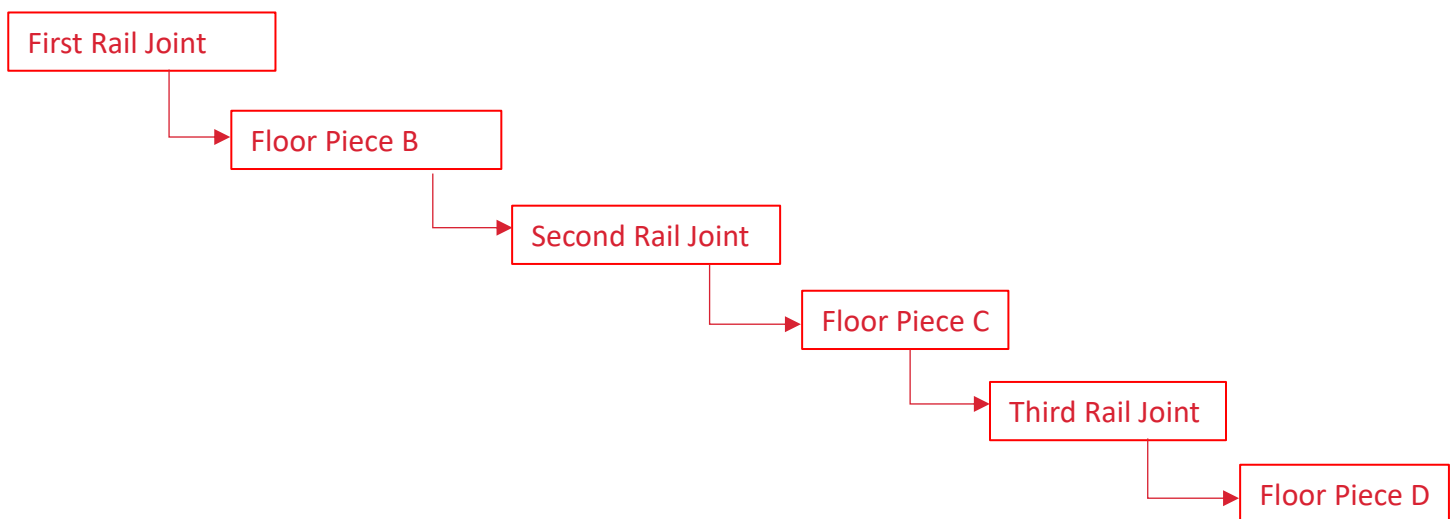
**Apply a thin line of glue in both the grooves of the Rail Joints, that is supplied with Legend's floor.**

**Step 1:** Install Floor Piece A, as shown below.



Figure 1

**Step 2:** Install the Parts in the following order after installing Floor Piece A. as shown below.



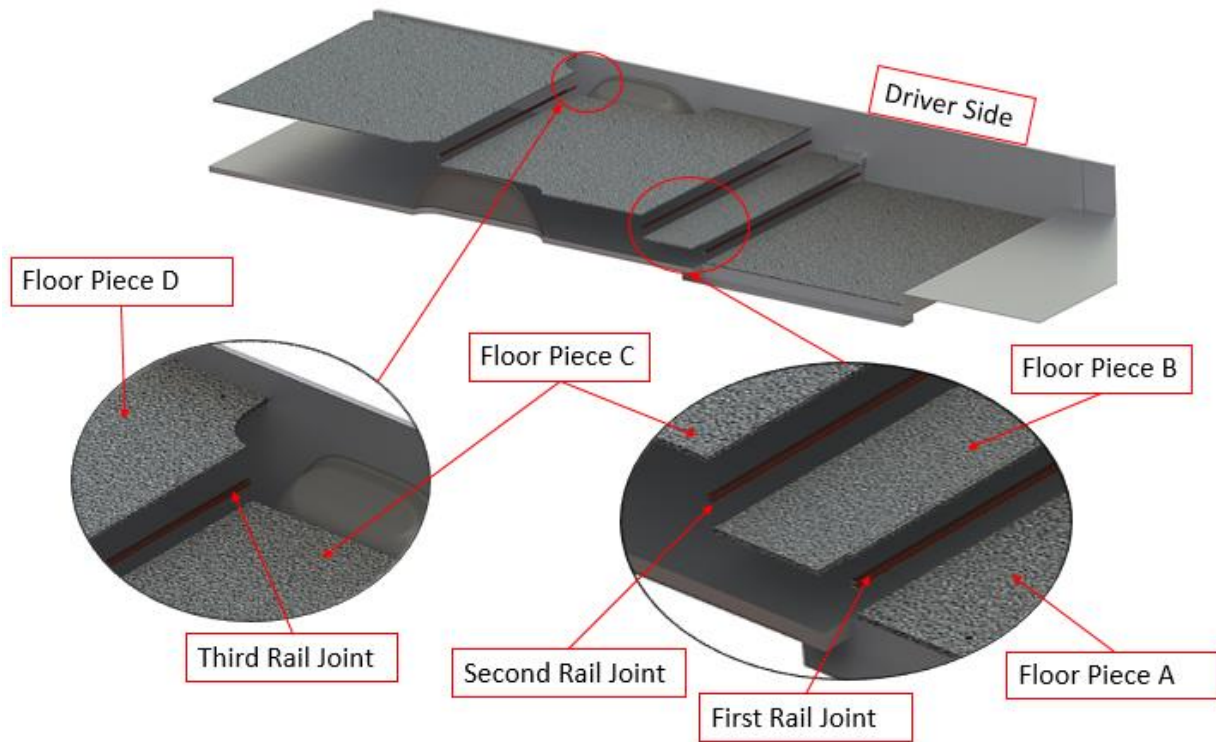


Figure 2

**Step 3:** Replace the OEM bolt in each D-Ring with combination of M8 Bolt and a flat washer as shown below.

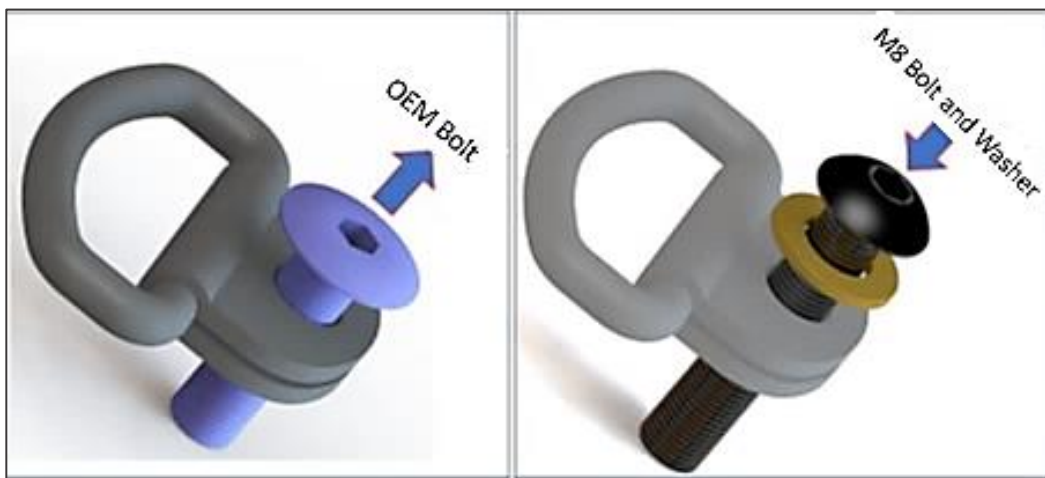
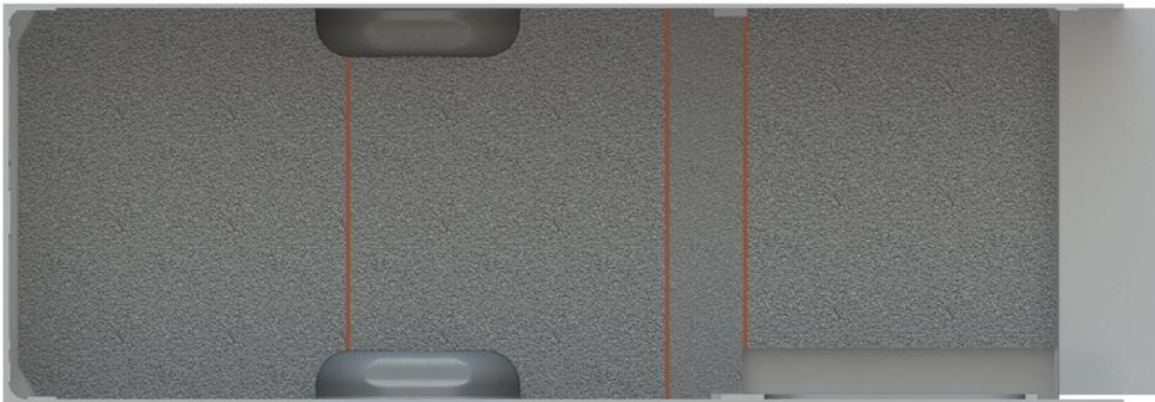


Figure 3

**Step 4:** Completing the installation of your Legend Floor



12 x



12 x



*Figure 4*

**"Floor Installed"** *This view is from Inside of Van-Viewing from Top*



# Floor Sills

## Parts and Hardware

1 x



SIDE SILL

1 x



REAR SILL

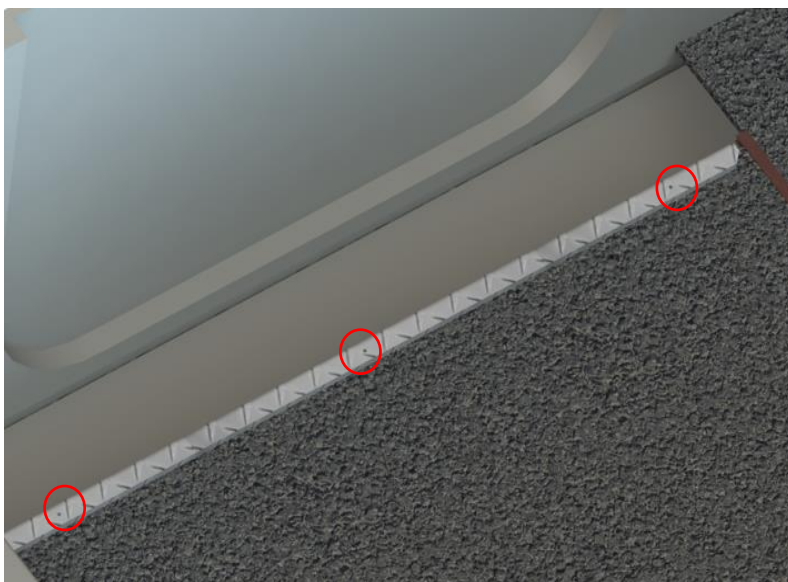
6 x



PAN-HEAD SCREW

## Assembly Instructions

**Step 1:** Position the Side Sill on Legend's Floor. Place the Pan Head Screws (3 Nos) to the Floor as shown below



3 x



Figure 5

"Positioning and Fixing of the Side Sill"



**Step 2:** Position the Rear Sill on Legend's Floor.

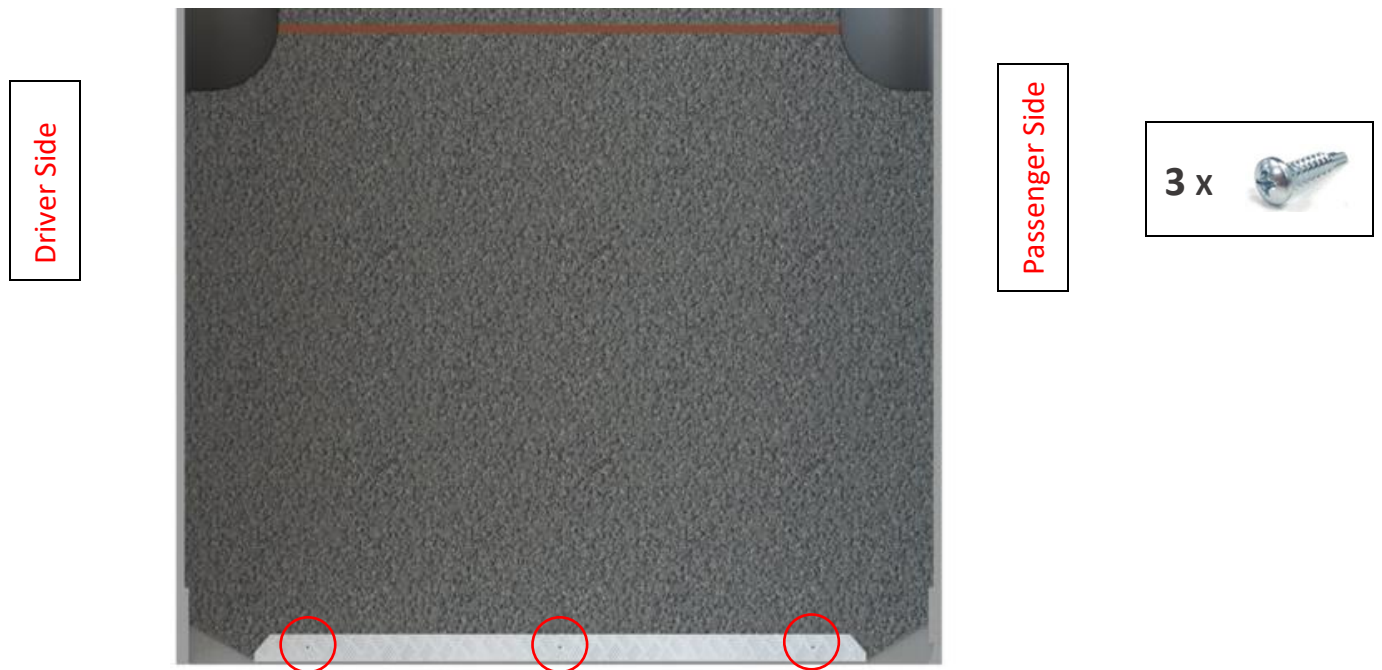
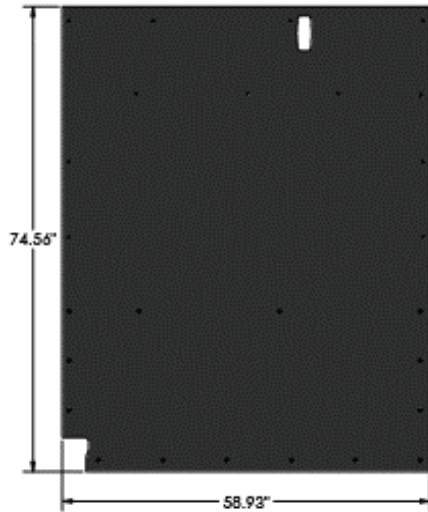


Figure 6

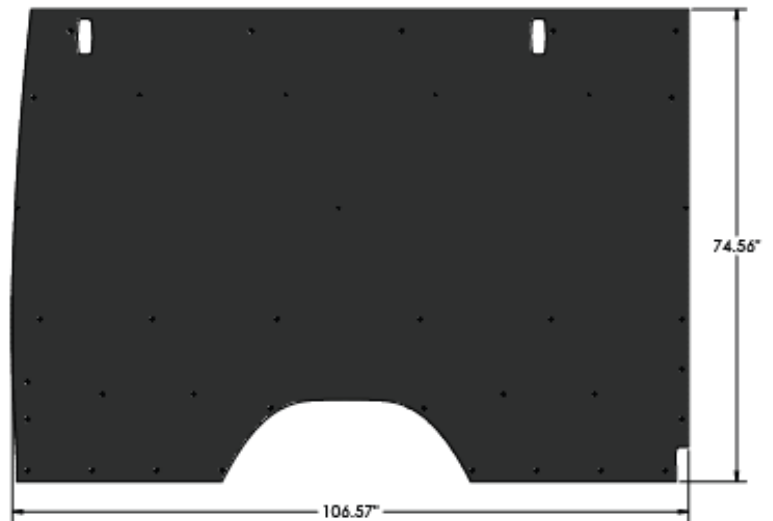
*"Positioning and Fixing of the Rear Sill"*

# Wall Liners

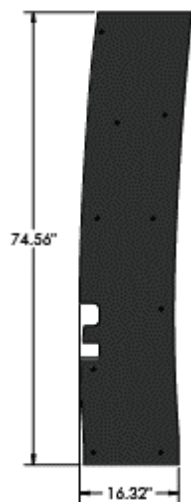
## Parts and Hardware



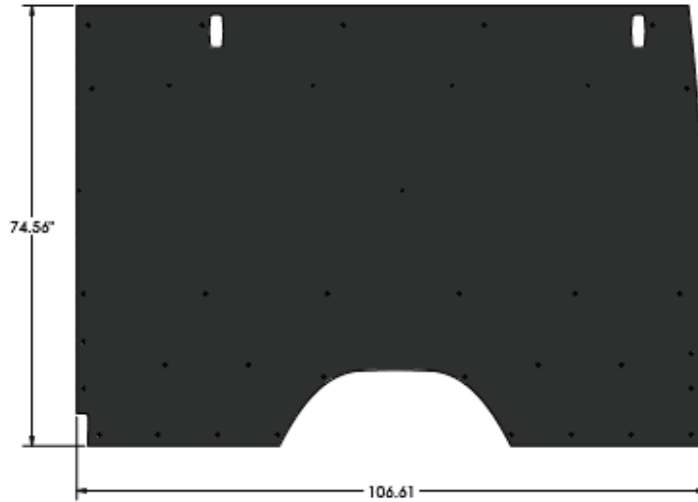
**DRIVER SIDE FRONT WALL LINER (D1A)**



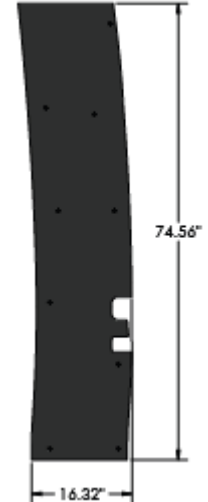
**DRIVER SIDE REAR WALL LINER (D2A)**



**DRIVER SIDE FRONT WALL LINER (D3A)**



**PASSENGER SIDE FRONT WALL LINER (P1A)**



**PASSENGER SIDE REAR WALL LINER (P2A)**

94 x



**PUSH-IN RIVET**

26 x



**SCREW CAP**

26 x



**SELF-DRILLING SCREW**

## Assembly Instructions

**If Legend's Wheel Well Covers are used, the Wall Liner will lay over the Top Flange of Wheel Well Cover.**

**Hole Diameter ( $\varnothing$ ) = 0.40" =**



**Hole Diameter ( $\varnothing$ ) = 0.20" =**



**Step 1:** Bring the (D1A) Liner into the vehicle and align the holes on the panel with the ones present on the vehicle's body.

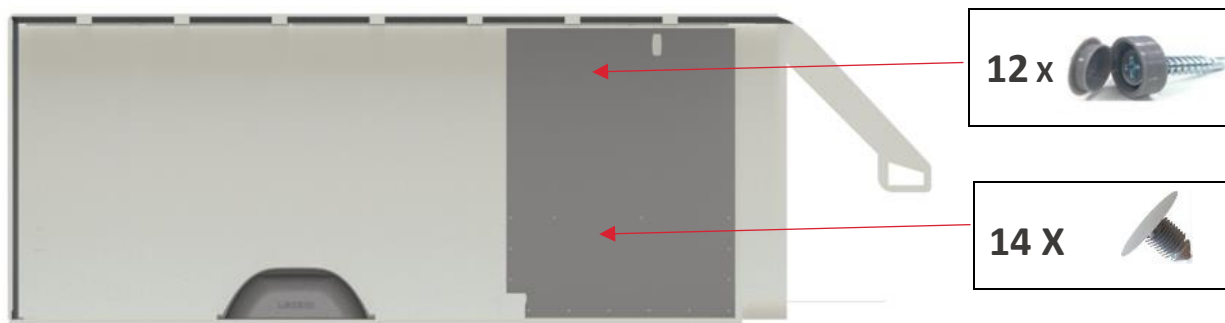


Figure 7

**Step2:** Bring the (D2A) Liner into the vehicle and align the holes on the panel with the ones present on the vehicle's body.

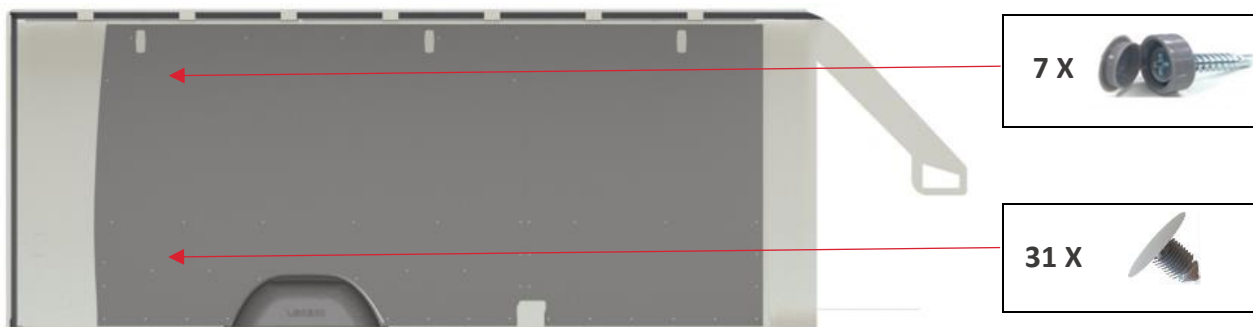


Figure 8

**Step3:** Bring the (D3A) Liner into the vehicle and align the holes on the panel with the ones present on the vehicle's body.

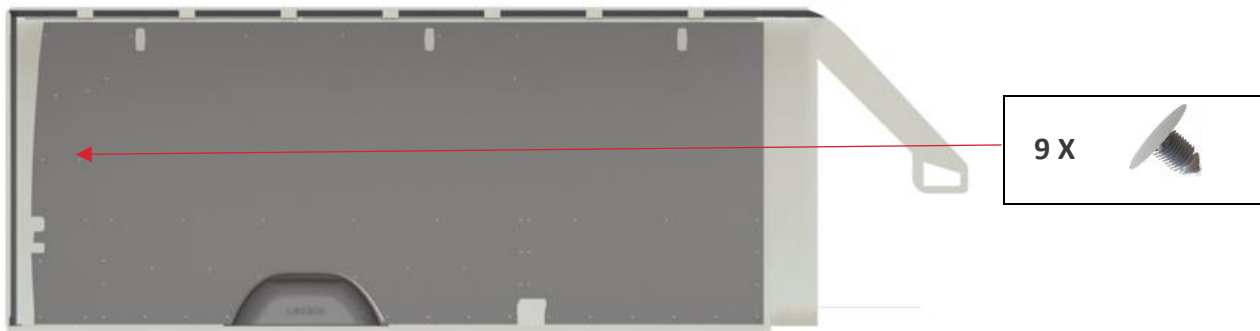


Figure 9

*"Driver Side Front & Rear Wall Liner Installed" This is view from Inside of the Van- Viewing from Passenger Side*

**Step 4:** Bring the (P1A) Liner into the vehicle and align the holes on the panel with the ones present on the vehicle's body.



Figure 10

*"Passenger Side Front Wall Liner Installed" This is view from Inside of the Van- Viewing from Driver Side*

**Step 5:** Bring the (P2A) Liner into the vehicle and align the holes on the panel with the ones present on the vehicle's body.

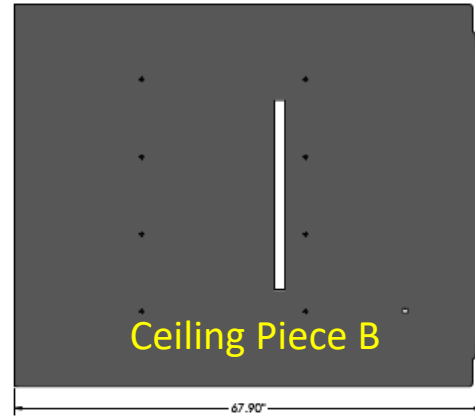
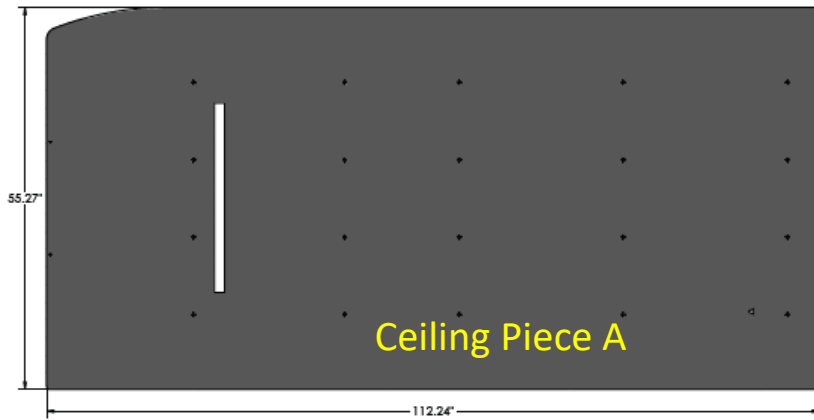


Figure 11

*"Passenger Side Front & Rear Wall Liner Installed" This is view from Inside of the Van- Viewing from Driver Side*

# Ceiling Liners

## Parts and Hardware



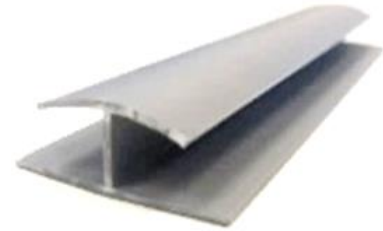
CEILING PIECES

1 x



CEILING BRACKET

1 x



CEILING JOINER STRIP (55.25")

2 x



SCREW CAP

2 x



SELF-DRILLING SCREW


28 x




PUSH-IN RIVET

# Assembly Instructions

**Follow the below instructions for score lines on Rear surface of Ceiling Panel**

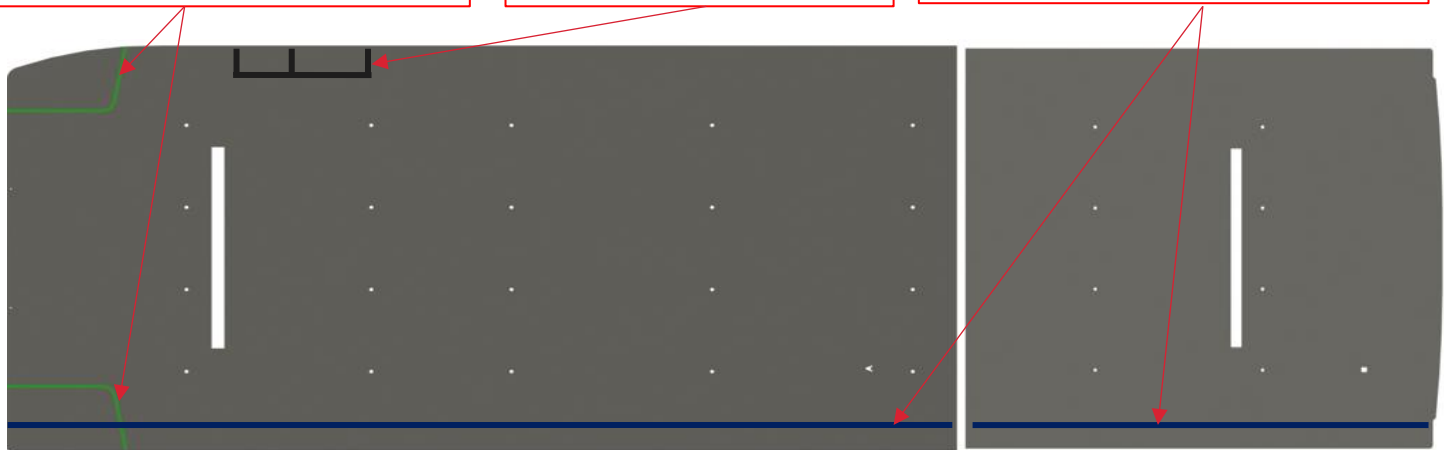
Hole Diameter ( $\varnothing$ ) = 0.40"= 

Hole Diameter ( $\varnothing$ ) = 0.20"= 

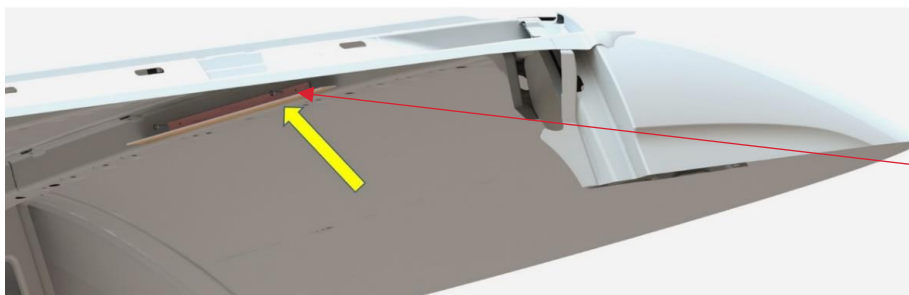
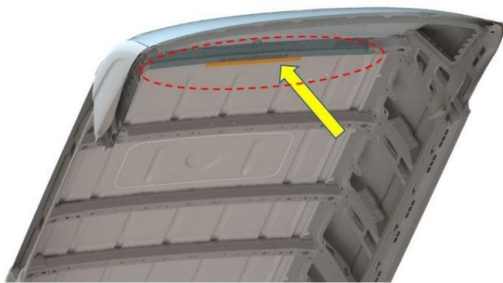
Cut along this score line (Shown in Green) if Foam Blocks are present behind headliner

Cut along this score line (Shown in Black) to fit around the OEM Lights

Bend the Panel along this score line (Shown in Blue) to allow the ceiling to arch along the cross beam



**Step 1:** Install Ceiling Bracket to the roof as shown below.



2 x



Figure 12

**Step 2:** Install Ceiling Piece A, as shown below.

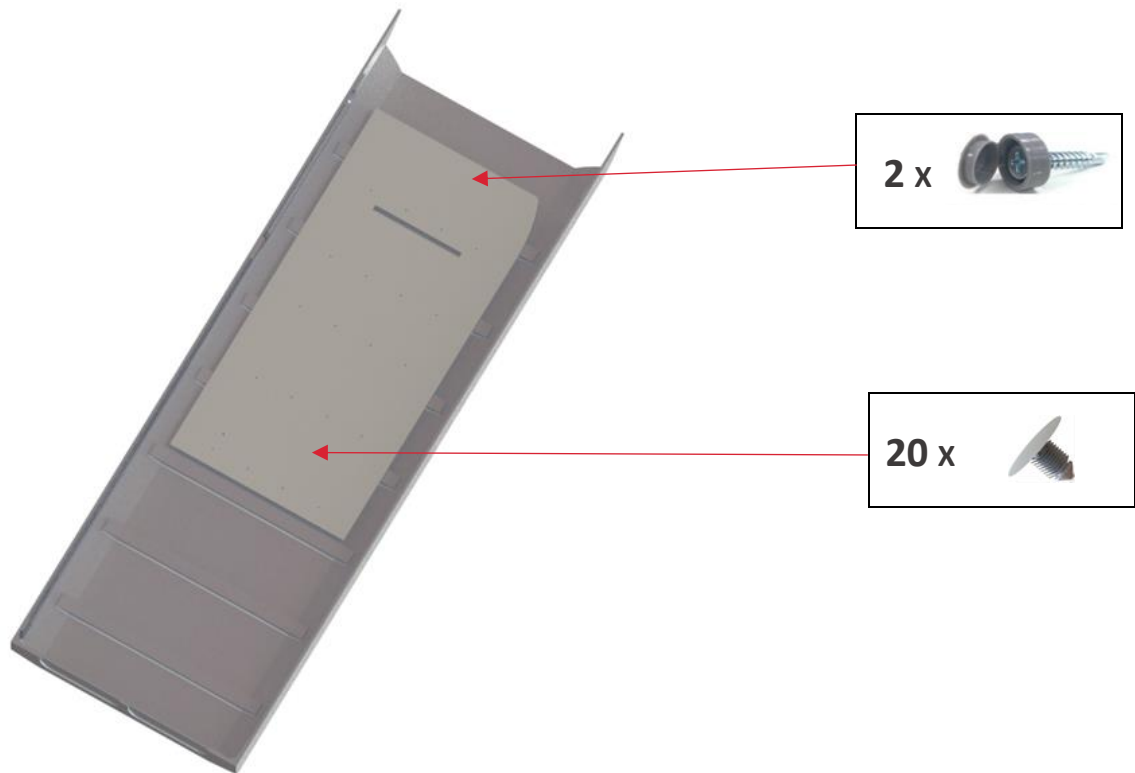


Figure 13

*"Positioning and Fixing of the Ceiling Panel A" This View is from Inside of the Van*

**Step 3:** Install the Ceiling Joiner strip at the edge of the Front Ceiling panel

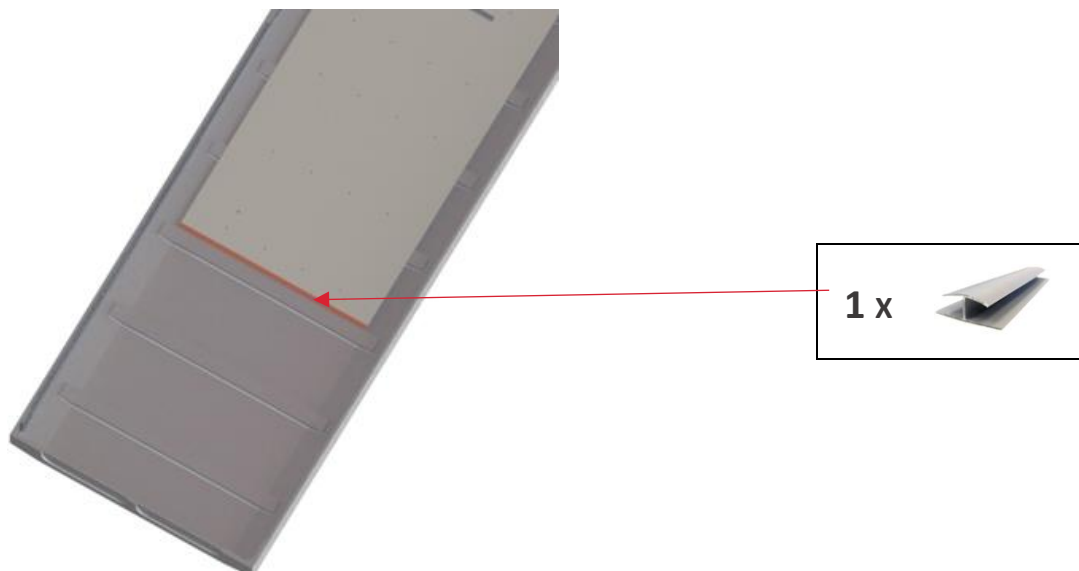


Figure 14

*"Positioning and Fixing of the Ceiling Liner Strip" This View is from Inside of the Van*



**Step 4:** Install Ceiling Piece B, as shown below. Ceiling liner.

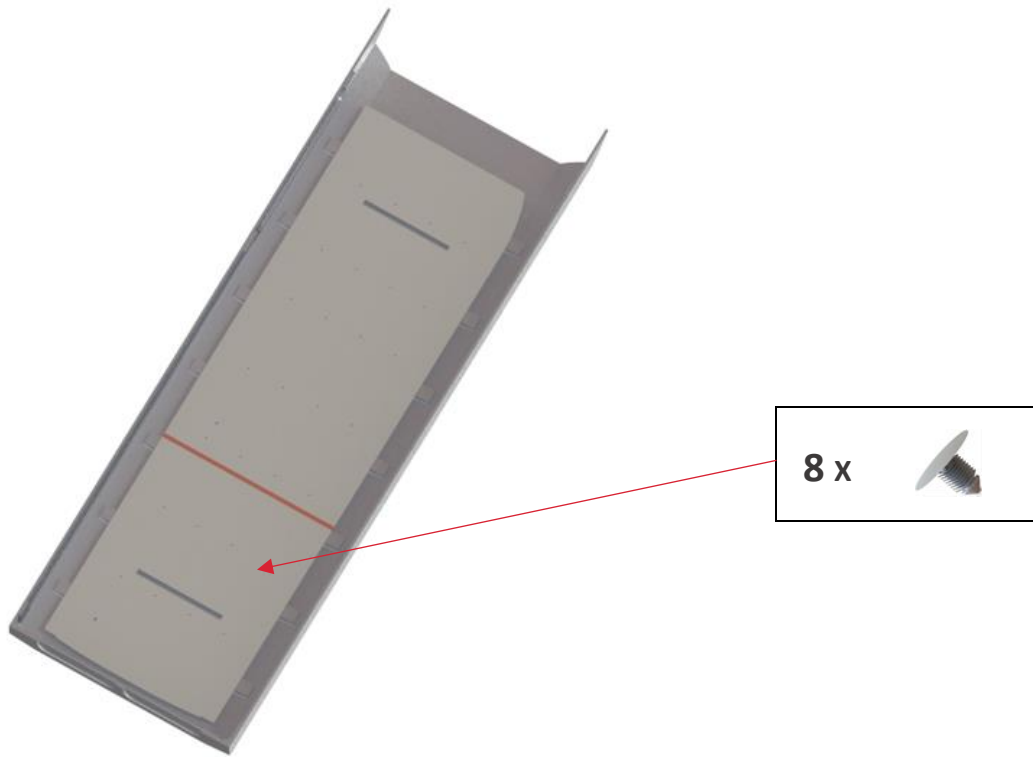


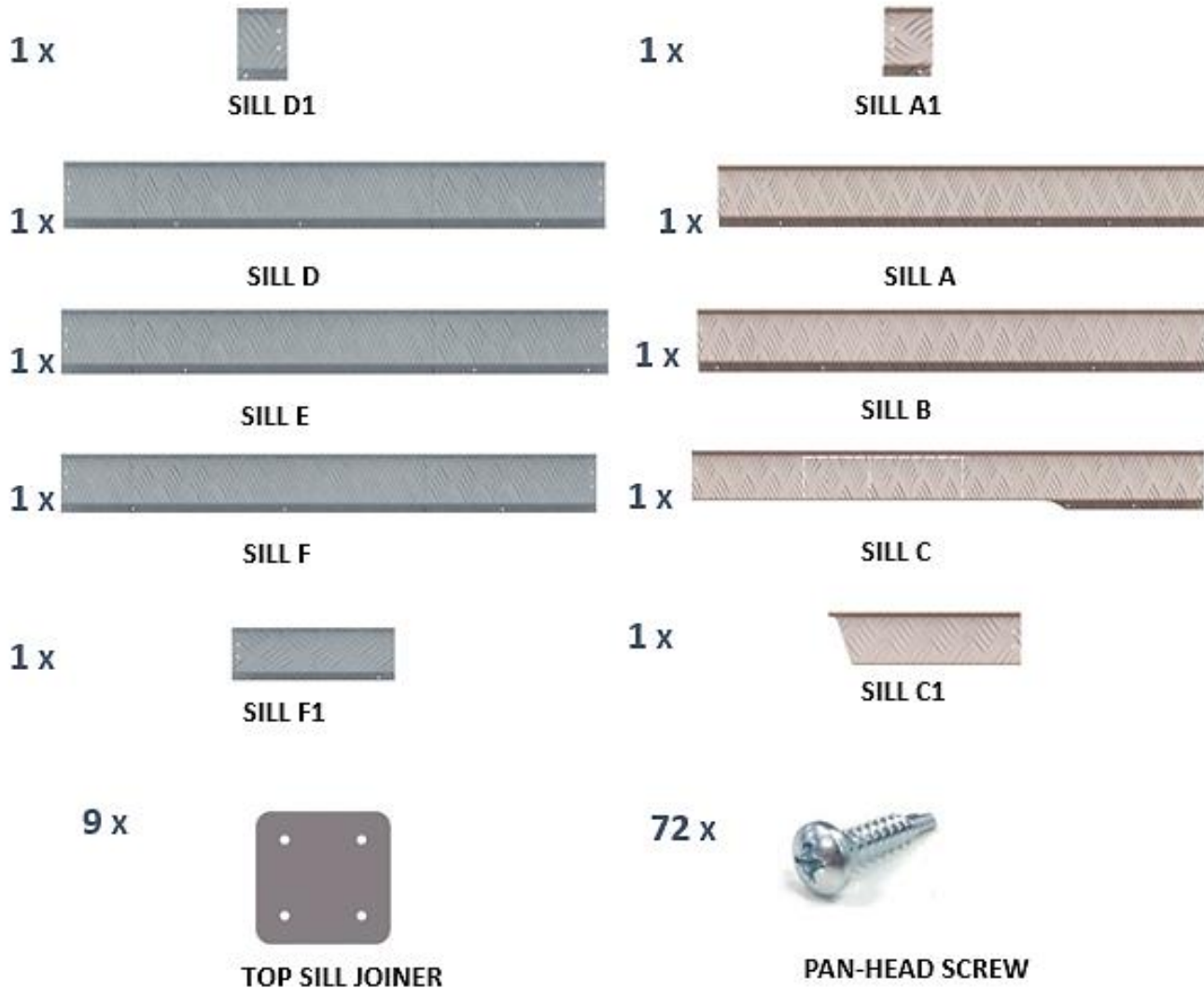
Figure 15

*"Positioning and Fixing of the Ceiling Panel B" This View is from Inside of the Van*

**Step 5:** This completes the installation of your Legend Ceiling Liner.

# Top Sills

## Parts and Hardware



## Assembly Instructions

**Assembly of the Top Sills is to be done outside of the Van before installing it in the Van.**

**Step 1:** Assemble Driver Side sill – D1, D, E, F, F1 as shown below.

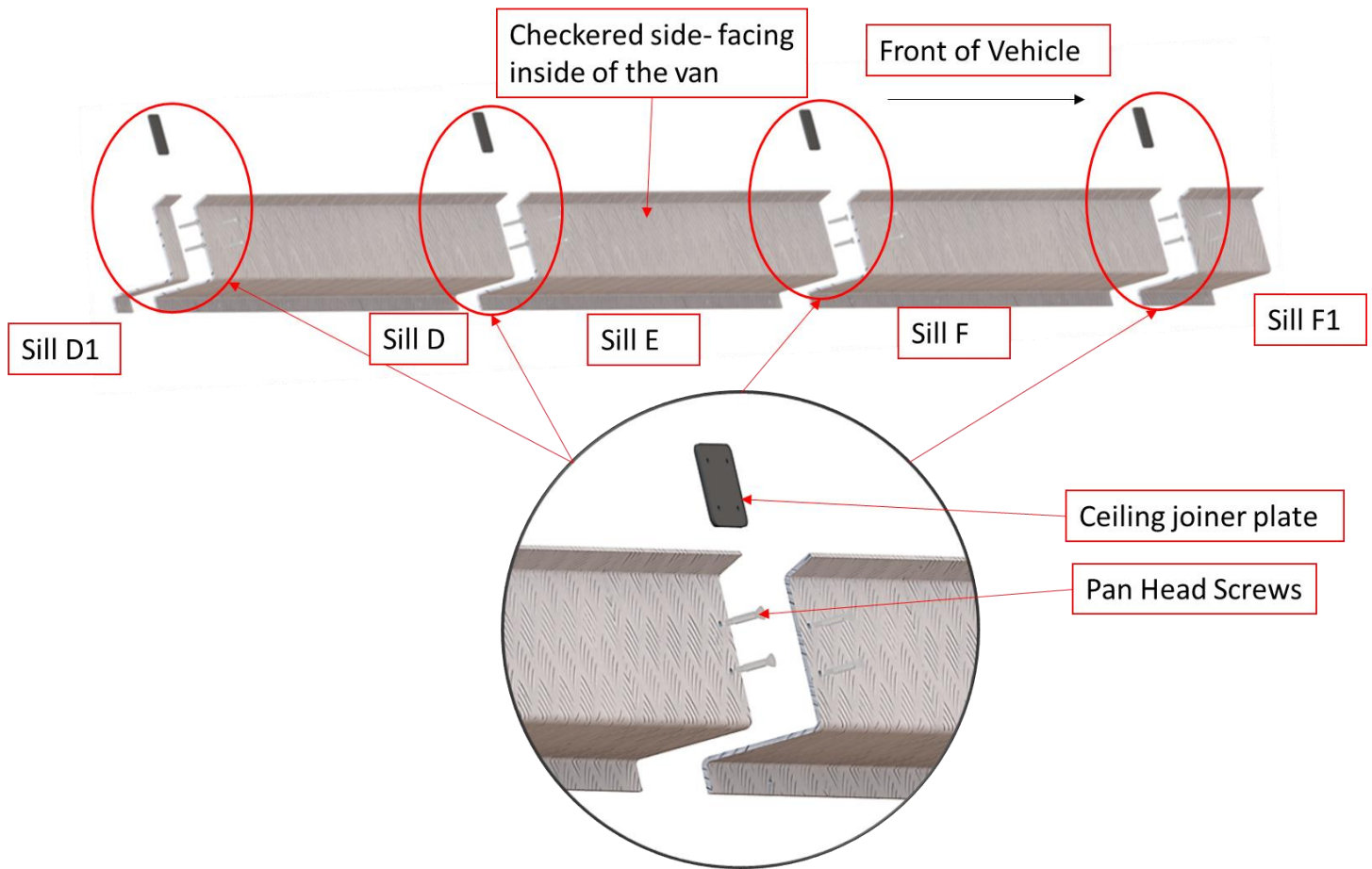


Figure 16

**Step 2:** Fasten assembled sills in the Van.

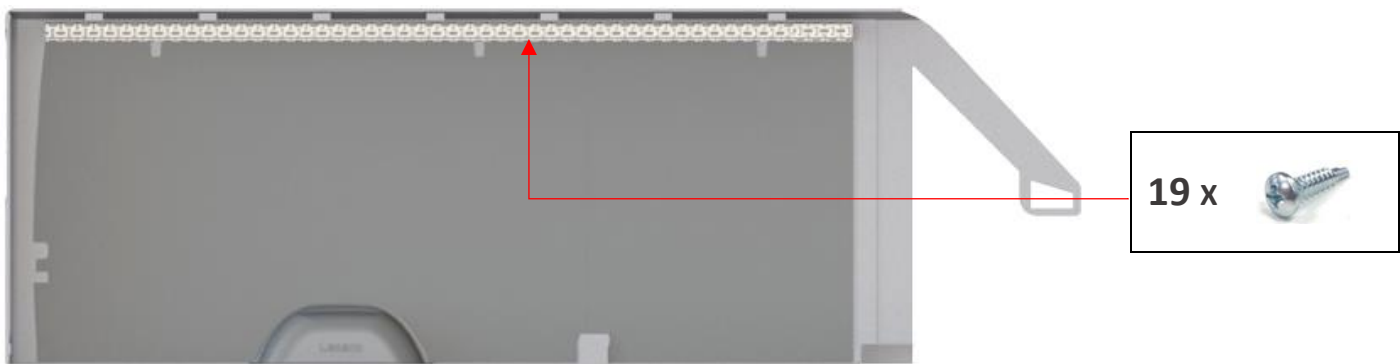


Figure 17  
"Driver side Top Sills installed"

**Step 3:** Assemble Passenger Side Sill – A1, A, B, C, C1 as shown below.

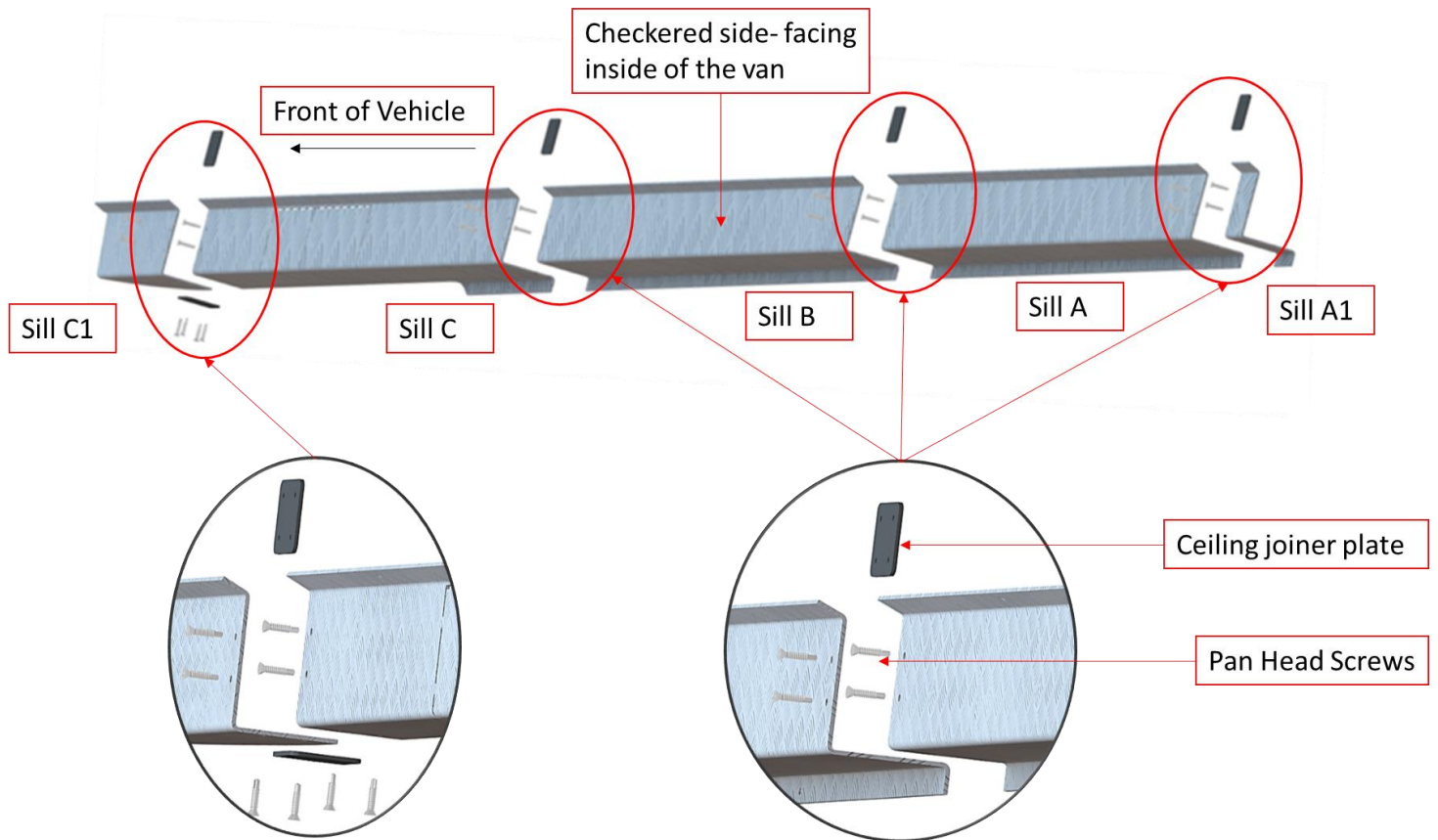


Figure 18

**Step 4:** Fasten assembled sills in the Van.

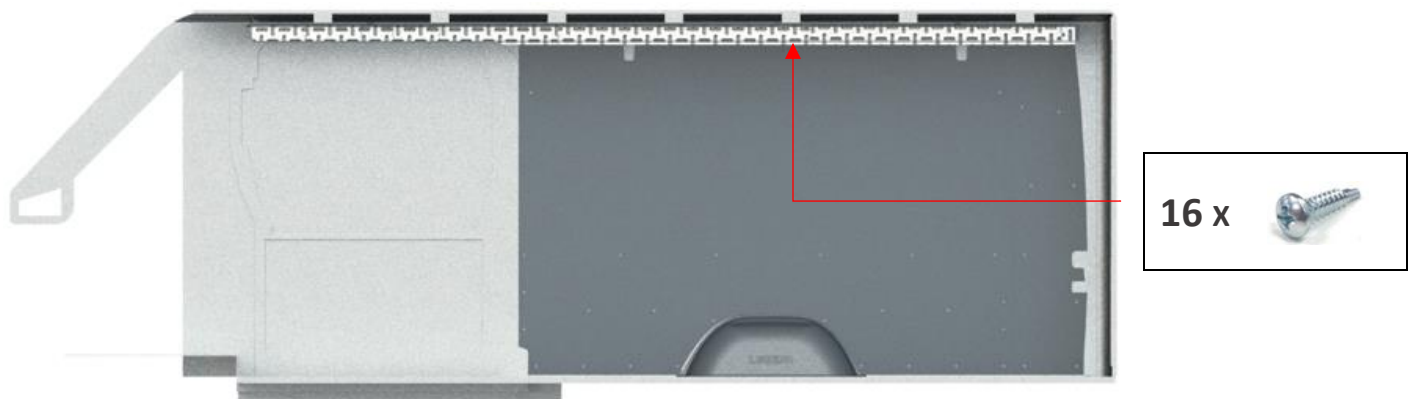
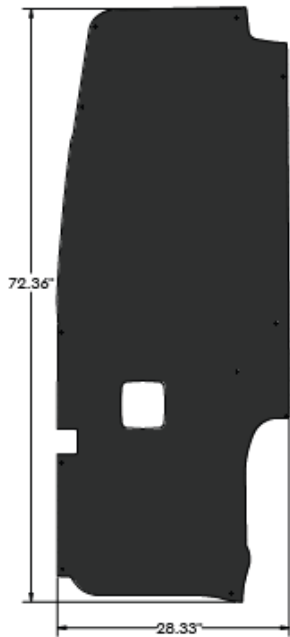


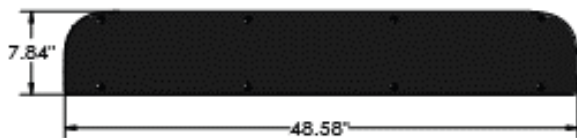
Figure 19  
"Passenger side Top Sills installed"

# Door Liners

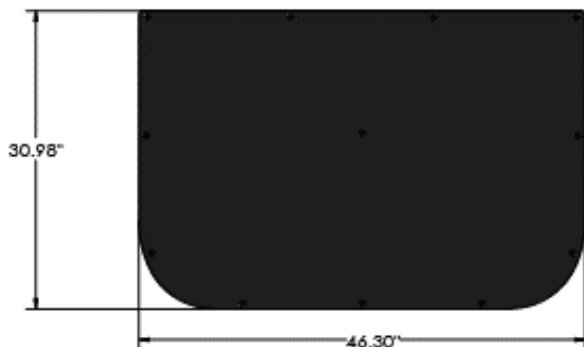
## Parts and Hardware



**DRIVER SIDE REAR DOOR LINER(DRA)**



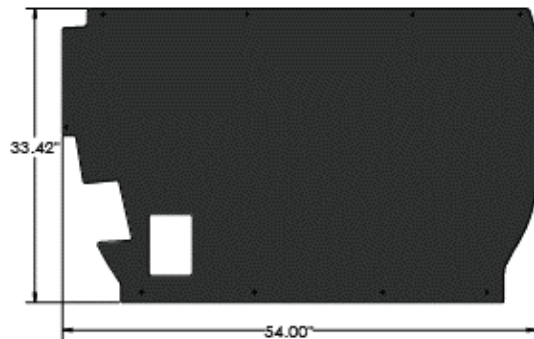
**PASSENGER SIDE SLIDING DOOR LINER (PSC)**



**PASSENGER SIDE SLIDING DOOR LINER (PSA)**



**PASSENGER SIDE REAR DOOR LINER(PRA)**



**PASSENGER SIDE SLIDING DOOR LINER (PSB)**

20 x



**PUSH-IN RIVETS**


33 x




**SELF-DRILLING SCREW**

# Assembly Instructions

**Van Doors MUST be in close Position When Installing Door Liners.**

Hole Diameter ( $\varnothing$ ) = 0.40"= 

Hole Diameter ( $\varnothing$ ) = 0.20"= 

**Step 1:** Rear Door Assembly.

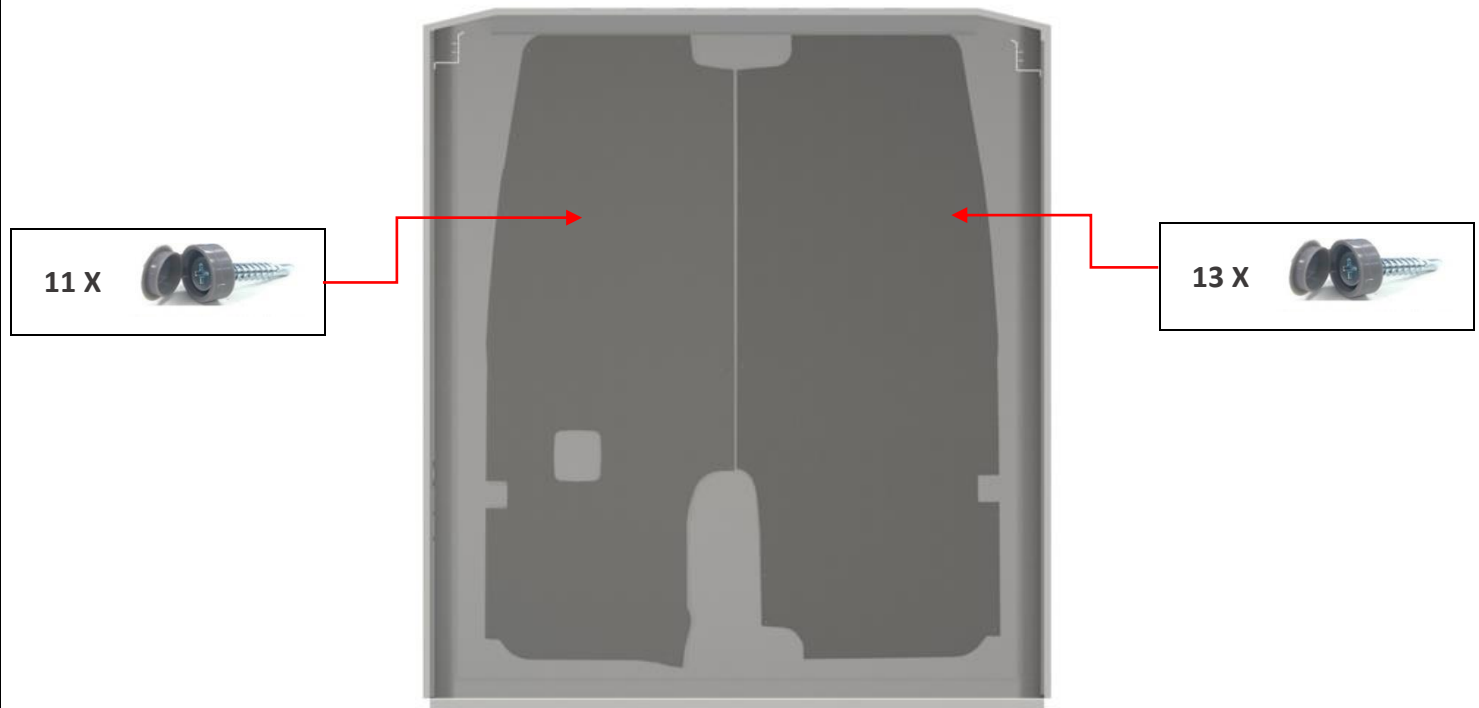


Figure 20  
"Rear Door Liners Installed"

**Step 2:** Side Door Assembly.

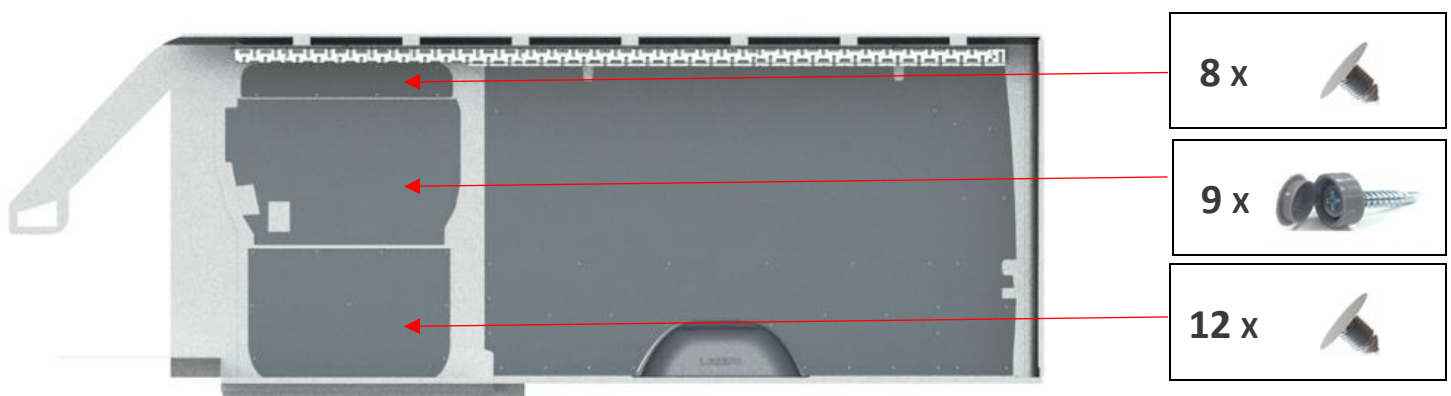


Figure 21

***"Passenger Side Sliding Door Liner Installed"***

**Step 3:** Installation of your Legend Door Liners is now complete.