

ASSEMBLY INSTRUCTIONS

MERCEDES SPRINTER 144'' CARGO- LOW ROOF HIGH ROOF

This document presents the detailed procedures for assembling Legend Fleet components and accessories.

Customers can make use these step-by-step procedures and easily assemble without major difficulty.



LEGEND

FLEET SOLUTIONS

519 688 1043
customercare@legendfleet.com

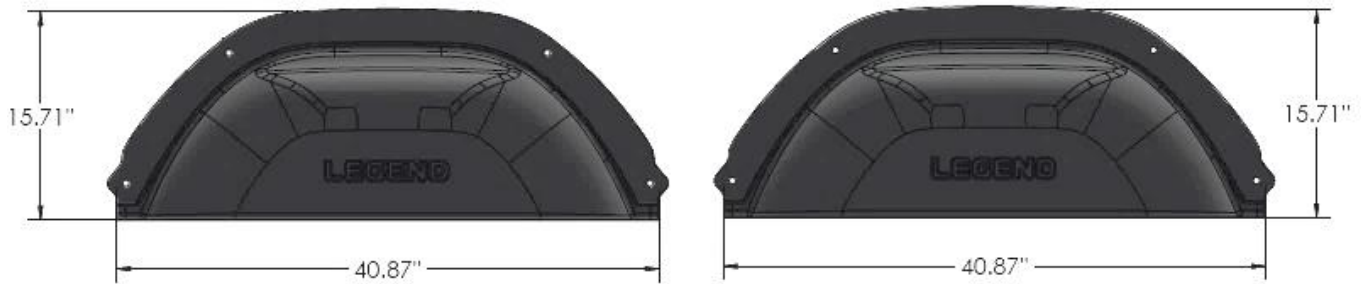
56957 HWY 3 WEST,
TILLSONBURG,
ON N4G 4G8.

Table of Contents

Wheel Well Cover.....	3
Floor.....	4
Floor Sills	8
Wall Liners - 144" WB- Low Roof	10
Wall Liners - 144" WB- High Roof	13
Ceiling Liners - 144" WB- Low Roof	16
Ceiling Liners - 144" WB- High Roof	20
Top Sills - 144" WB- Low Roof	24
Top Sills - 144" WB- High Roof	27
Door Liners - 144" WB- Low Roof	30
Door Liners - 144" WB- High Roof	32

Wheel Well Cover

Parts and Hardware



DRIVER SIDE'S WHEEL WELL COVER

PASSENGER SIDE'S WHEEL WELL COVER

8 X

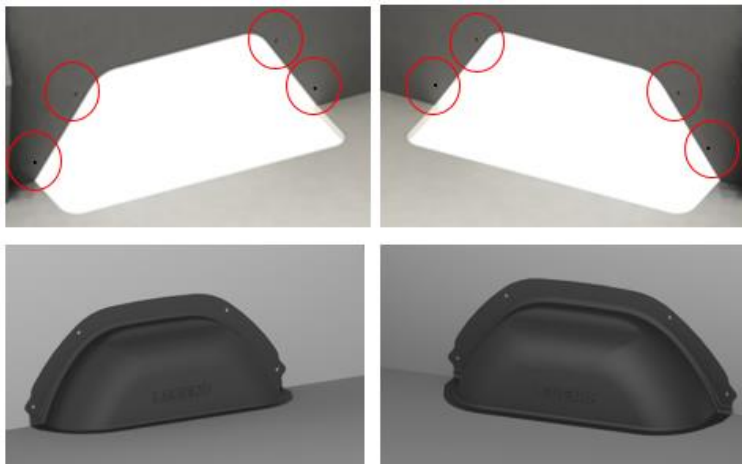


PUSH-IN RIVET

Assembly Instructions

Floor and Wall liner must be installed after the installation of Wheel well covers

Step 1: Place the **Driver side** and **Passenger side** wheel well covers in the vehicle, as shown below.



"positioning of Passenger side WWC"

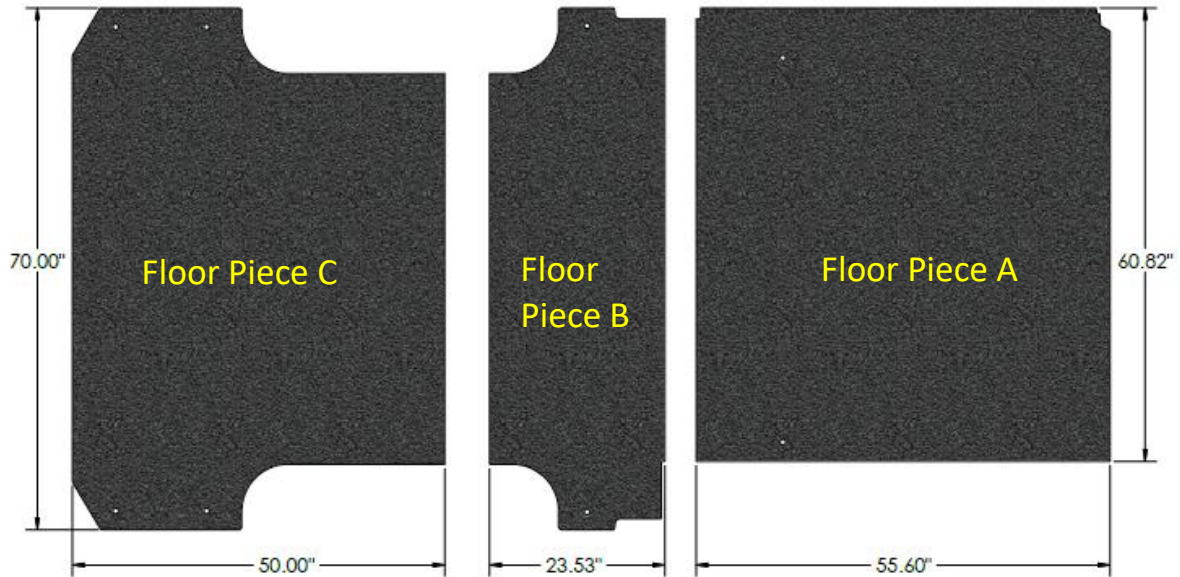
"positioning of Driver side WWC"

8 X

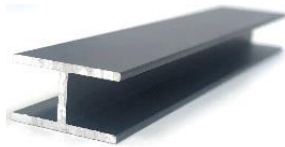


Floor

Parts and Hardware

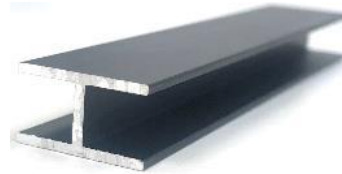


1 X



FRONT RAIL JOINT (59.35")

1X



REAR RAIL JOINT (52.42")

8 X



M8 BOLT

8 X



M8 FLAT WASHER

1 X



GLUE

Assembly instructions

Remove the following items before floor installation:

1. OEM Plastic Trim
2. D-Rings
3. Tie-Downs
4. Other installed parts

Apply a thin line of glue in both the grooves of the Rail Joints, that is supplied with Legend's floor.

Step 1: Install Floor Piece A, as shown below.

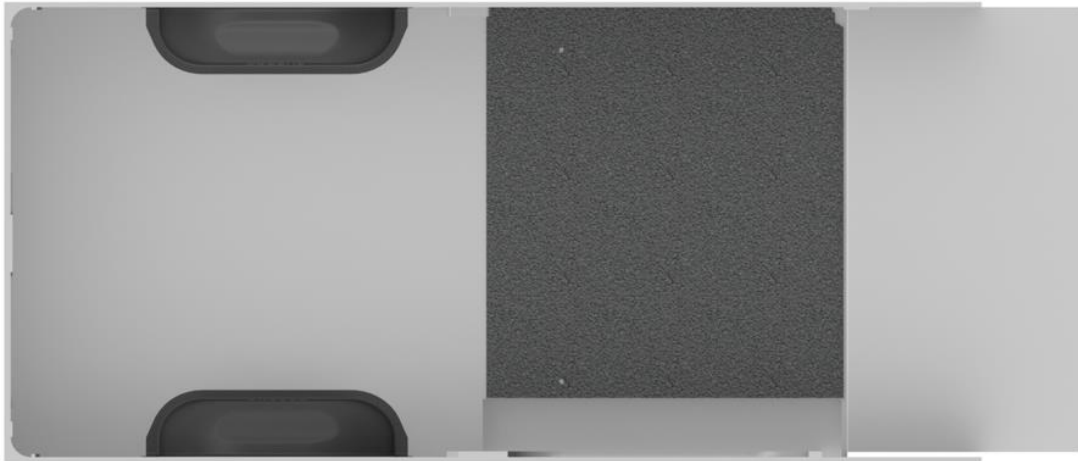
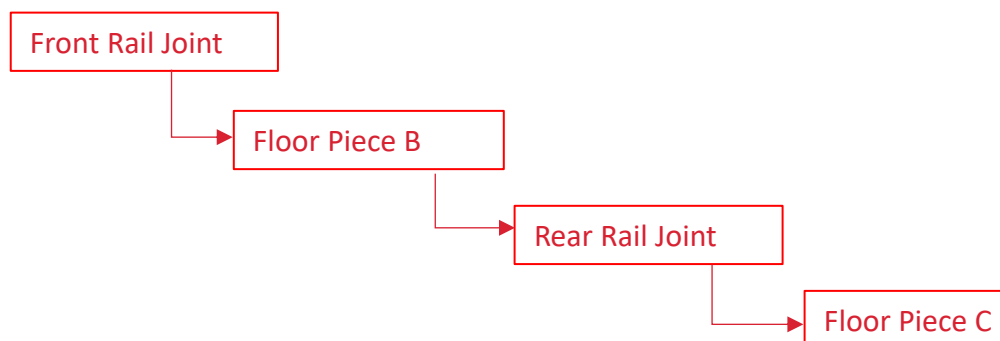


Figure 1

Step 2: Install the Parts in the following order after installing Floor Piece A. as shown below.



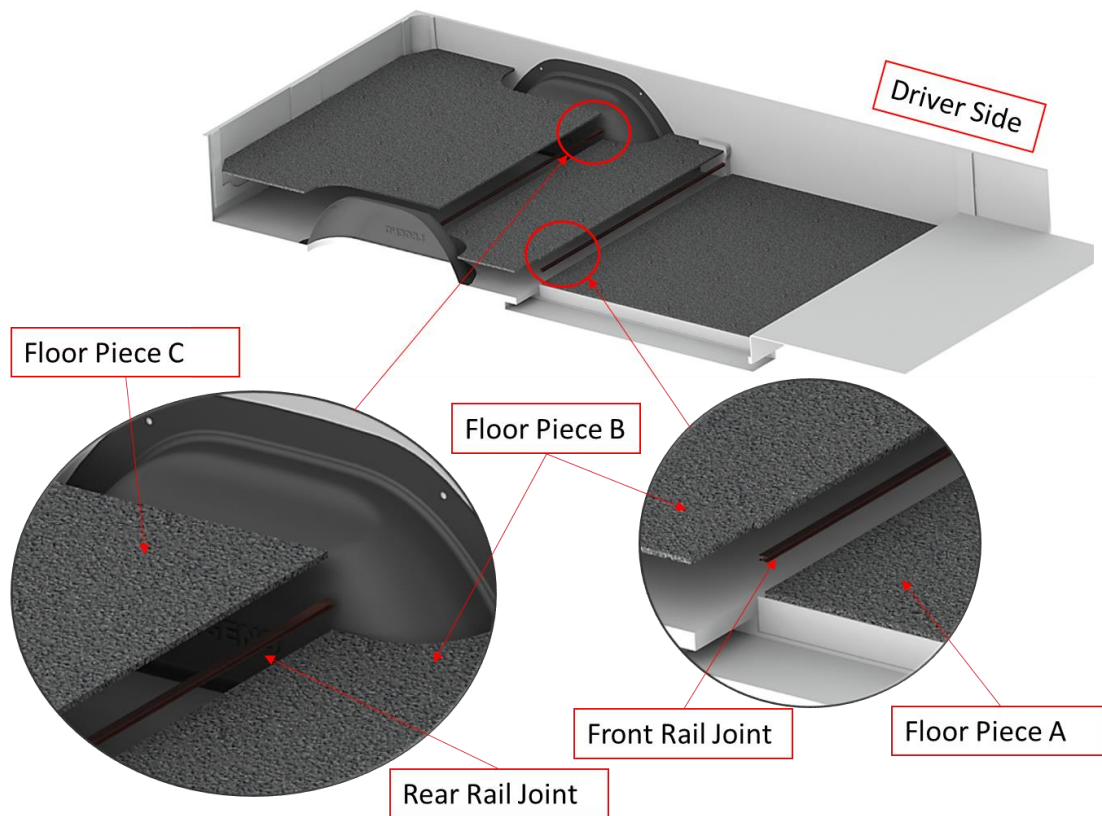


Figure 2

Step 3: Replace the OEM bolt in each D-Ring with combination of M8 Bolt and a flat washer as shown below.

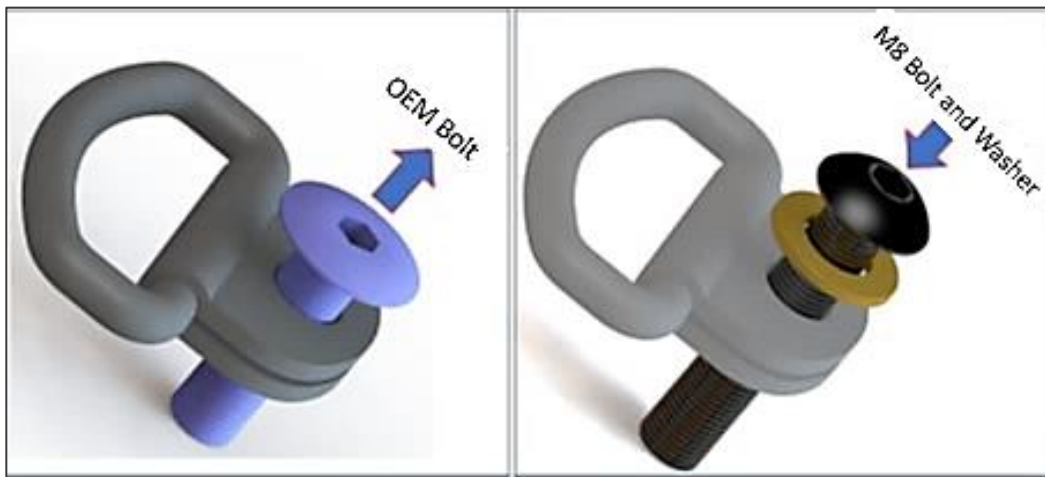
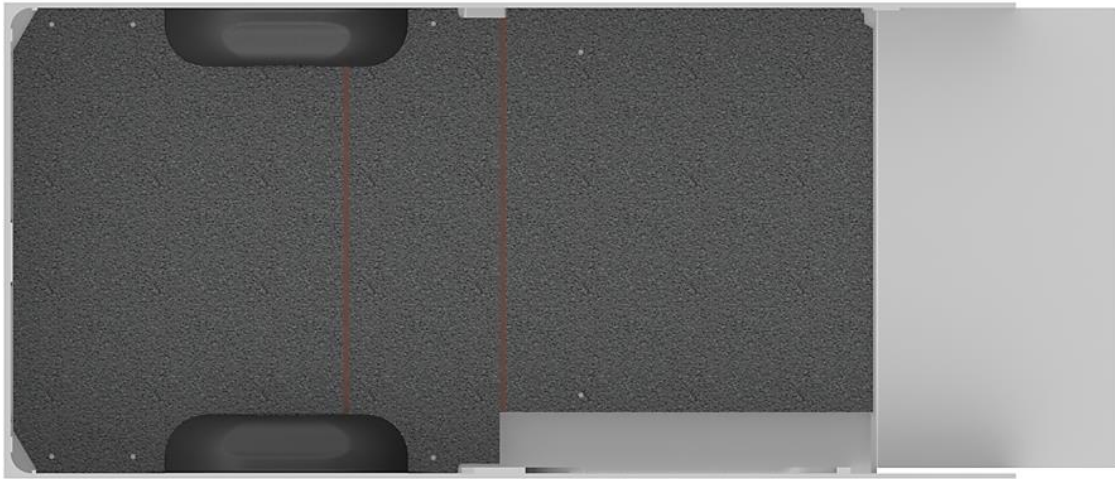


Figure 3

Step 4: Re-install these modified D-Rings in the vehicle, thus completing the installation of Legend Floor.



8 X



8 X



Figure 4

"Floor Installed" *This view is from Inside of Van-Viewing from Top*

Floor Sills

Parts and Hardware



Assembly Instructions

Step 1: Position the Side Sill on Legend's Floor. Place the Pan Head Screws (3 Nos) to the Floor as shown below

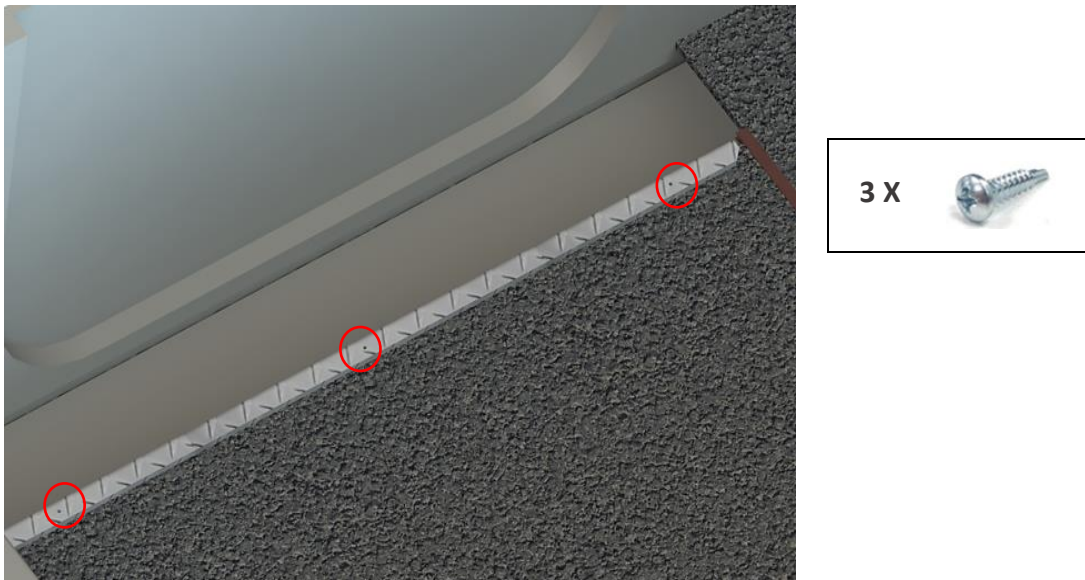


Figure 5
"Positioning and Fixing of the Side Sill"

Step 2: Position the Rear Sill on Legend's Floor.

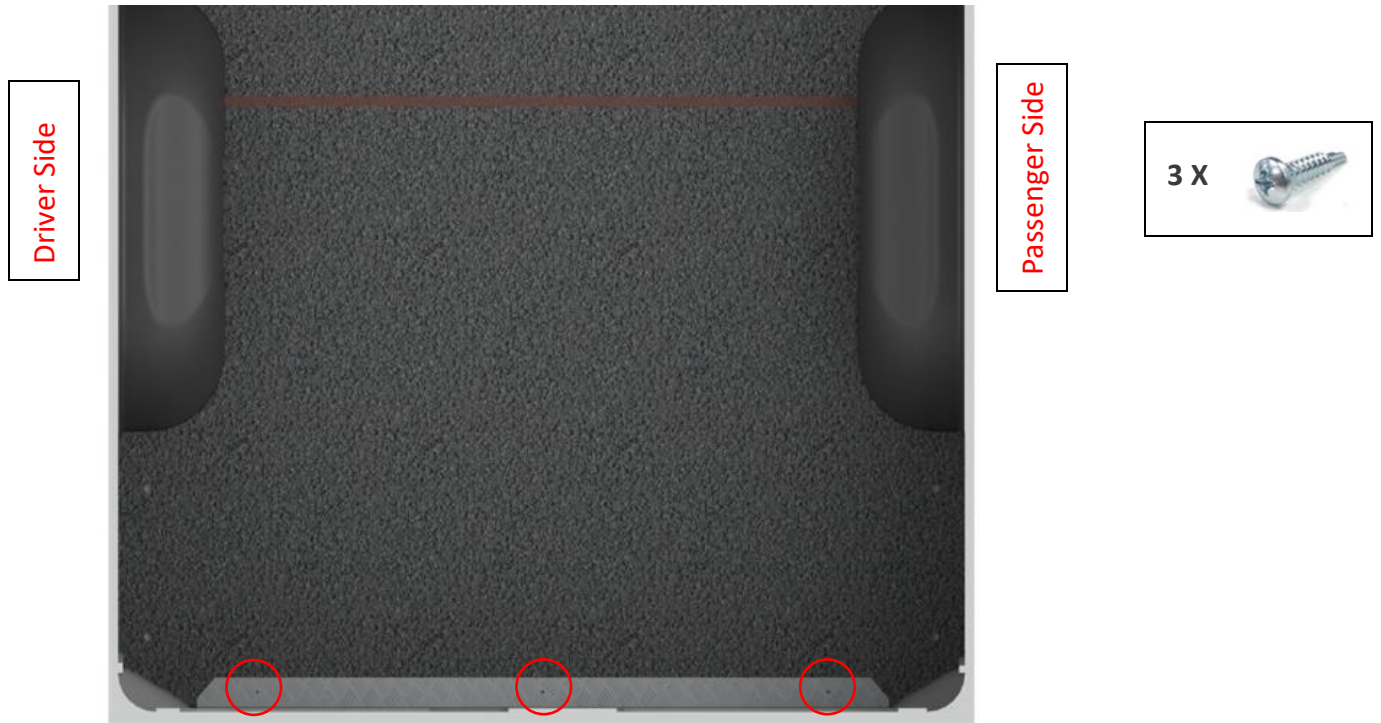
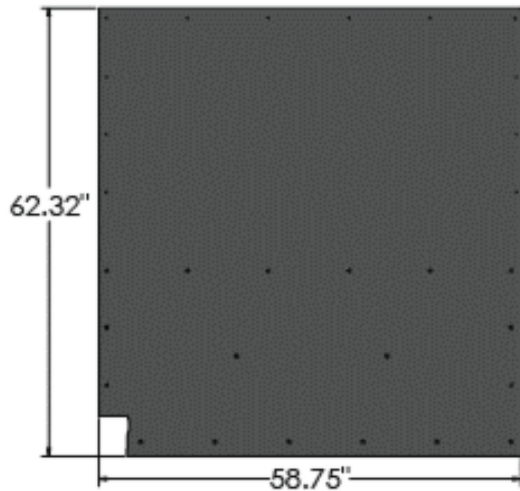


Figure 6

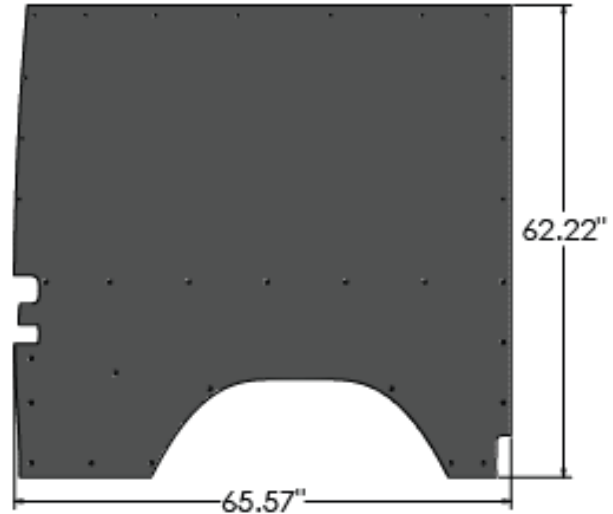
"Positioning and Fixing of the Rear Sill"

Wall Liners - 144" WB- Low Roof

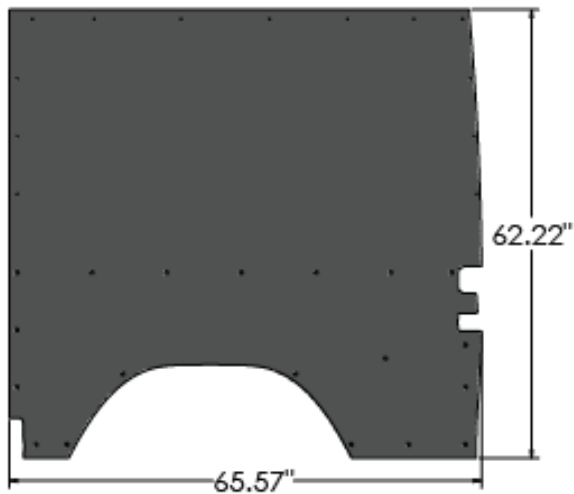
Parts and Hardware



DRIVER SIDE FRONT WALL LINER (D1A)



DRIVER SIDE REAR WALL LINER (D2A)



PASSENGER SIDE FRONT WALL LINER (P1A)

52 X



PUSH-IN RIVET

37 X



SCREW CAP

37 X



SELF-DRILLING SCREW

Assembly Instructions

If Legend's Wheel Well Covers are used, the Wall Liner will lay over the Top Flange of Wheel Well Cover.

Hole Diameter (\varnothing) = 0.40"=



Hole Diameter (\varnothing) = 0.20"=



Step 1: Bring the (D1A) Liner into the vehicle and align the holes on the panel with the ones present on the vehicle's body.

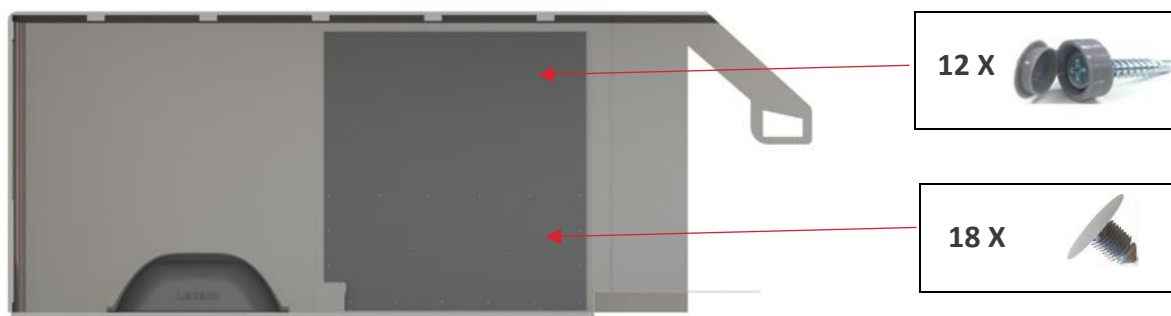


Figure 7

Step2: Bring the (D2A) Liner into the vehicle and align the holes on the panel with the ones present on the vehicle's body.

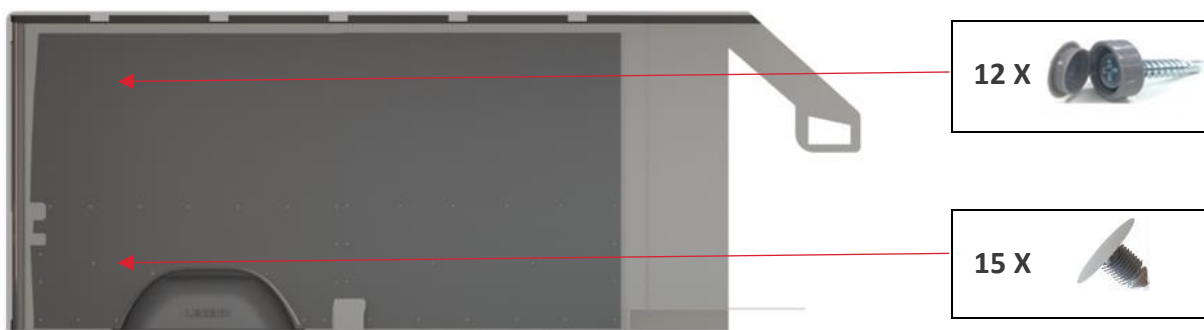


Figure 8

"Driver Side Front & Rear Wall Liner Installed" This is view from Inside of the Van- Viewing from Passenger Side

Step 4: Bring the (P1A) Liner into the vehicle and align the holes on the panel with the ones present on the vehicle's body.

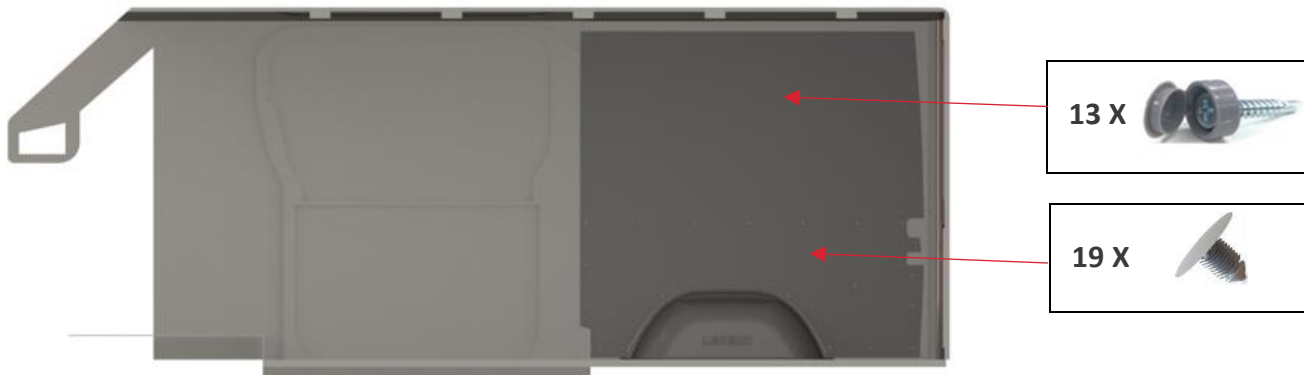
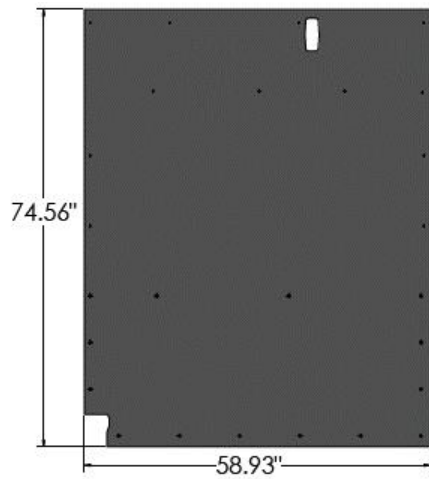


Figure 9

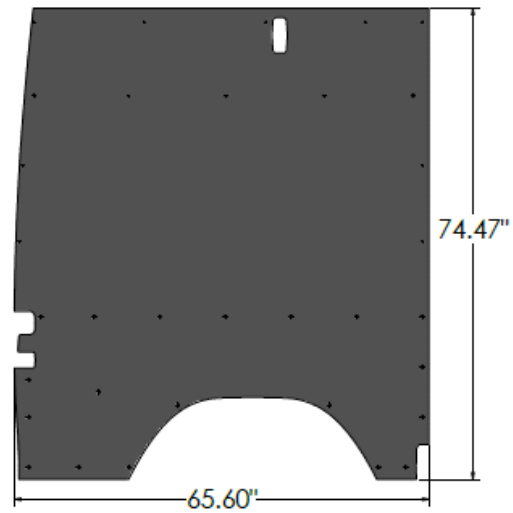
"Passenger Side Wall Liner Installed" This is view from Inside of the Van- Viewing from Driver Side

Wall Liners - 144" WB- High Roof

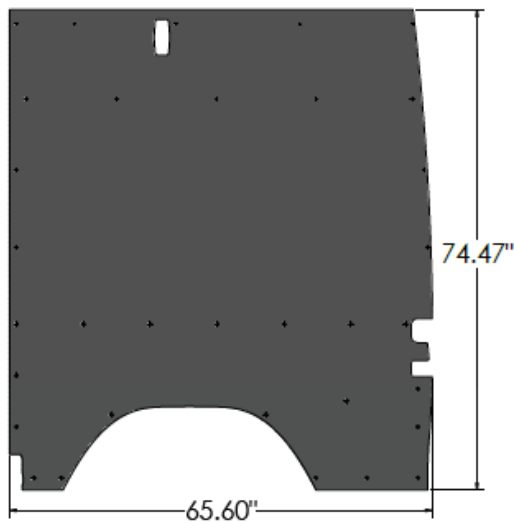
Parts and Hardware



DRIVER SIDE FRONT WALL LINER (D1A)



DRIVER SIDE REAR WALL LINER (D2A)



PASSENGER SIDE FRONT WALL LINER (P1A)

58 X



PUSH-IN RIVET

36 X



SCREW CAP


36 X




SELF-DRILLING SCREW

Assembly Instructions

If Legend's Wheel Well Covers are used, the Wall Liner will lay over the Top Flange of Wheel Well Cover.

Hole Diameter (\varnothing) = 0.40" = 

Hole Diameter (\varnothing) = 0.20" = 

Step 1: Bring the (D1A) Liner into the vehicle and align the holes on the panel with the ones present on the vehicle's body.

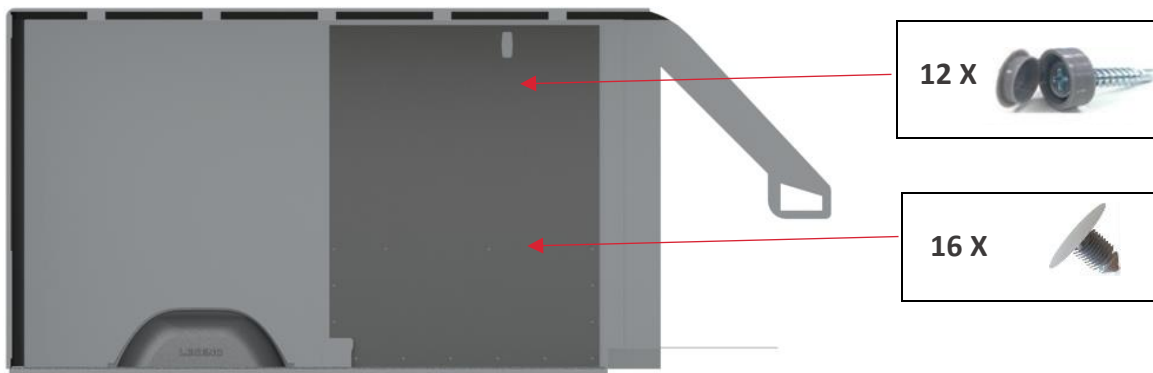


Figure 10

Step2: Bring the (D2A) Liner into the vehicle and align the holes on the panel with the ones present on the vehicle's body.

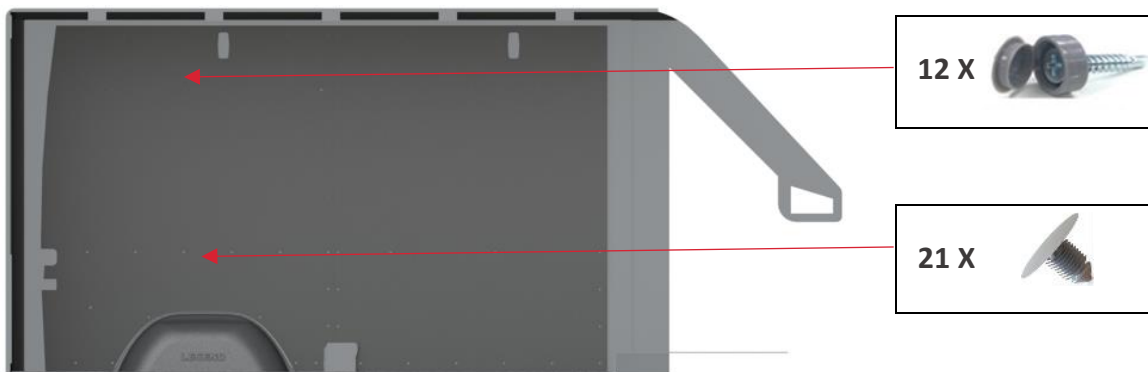


Figure 11

"Driver Side Front & Rear Wall Liner Installed" This is view from Inside of the Van- Viewing from Passenger Side

Step 4: Bring the (P1A) Liner into the vehicle and align the holes on the panel with the ones present on the vehicle's body.

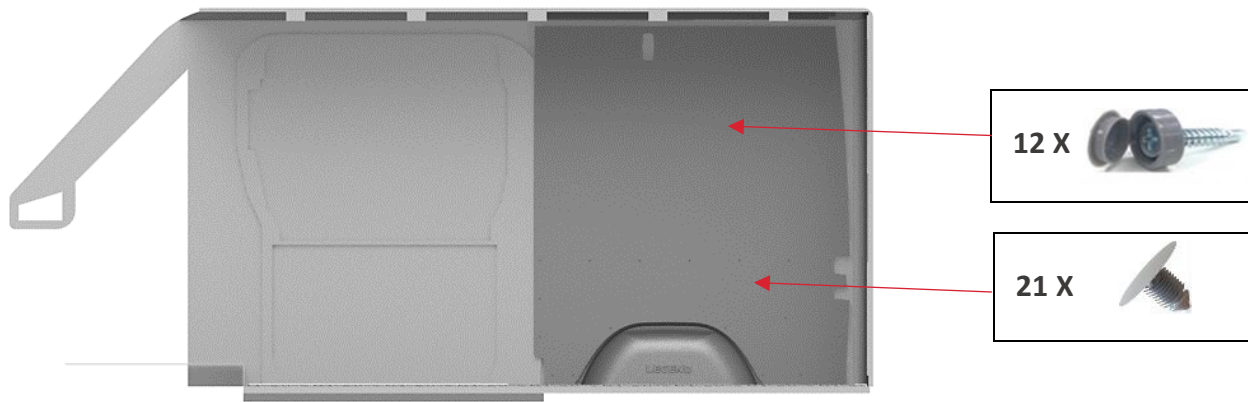
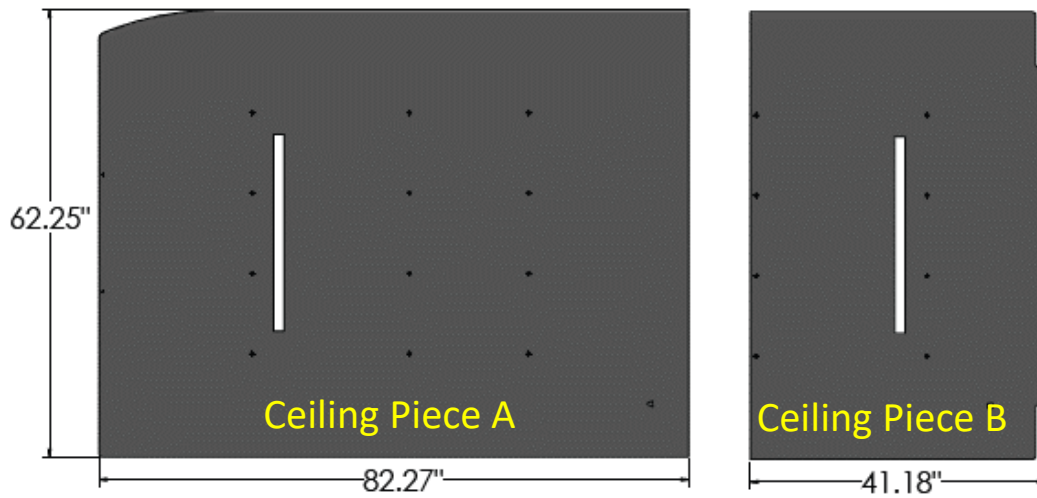


Figure 12

"Passenger Side Wall Liner Installed" *This is view from Inside of the Van- Viewing from Driver Side*

Ceiling Liners - 144" WB- Low Roof

Parts and Hardware



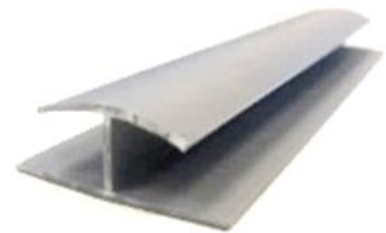
CEILING PIECES

1 X



CEILING BRACKET

1 X



CEILING JOINER STRIP (62.25")

2 X



SCREW CAP

2 X



SELF-DRILLING SCREW


20 X




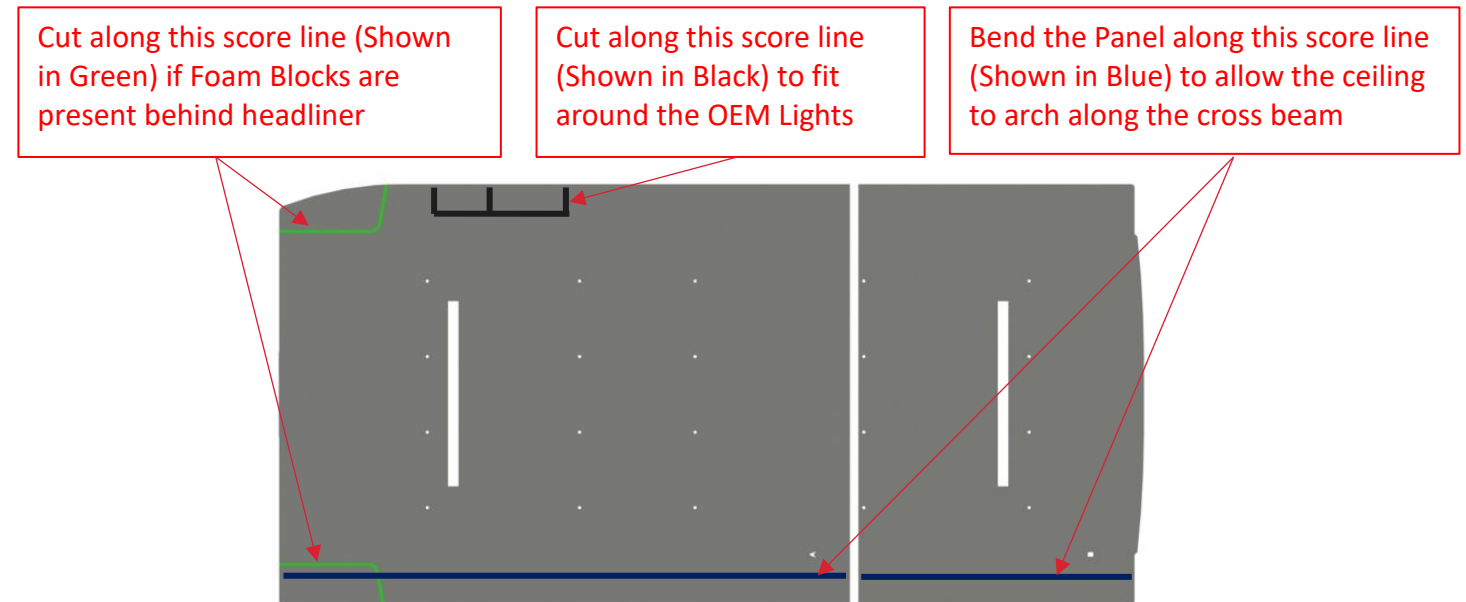
PUSH-IN RIVET

Assembly Instructions

Follow the below instructions for score lines on Rear surface of Ceiling Panel

Hole Diameter (\varnothing) = 0.40" = 

Hole Diameter (\varnothing) = 0.20" = 



Step 1: Install Ceiling Bracket to the roof as shown below.

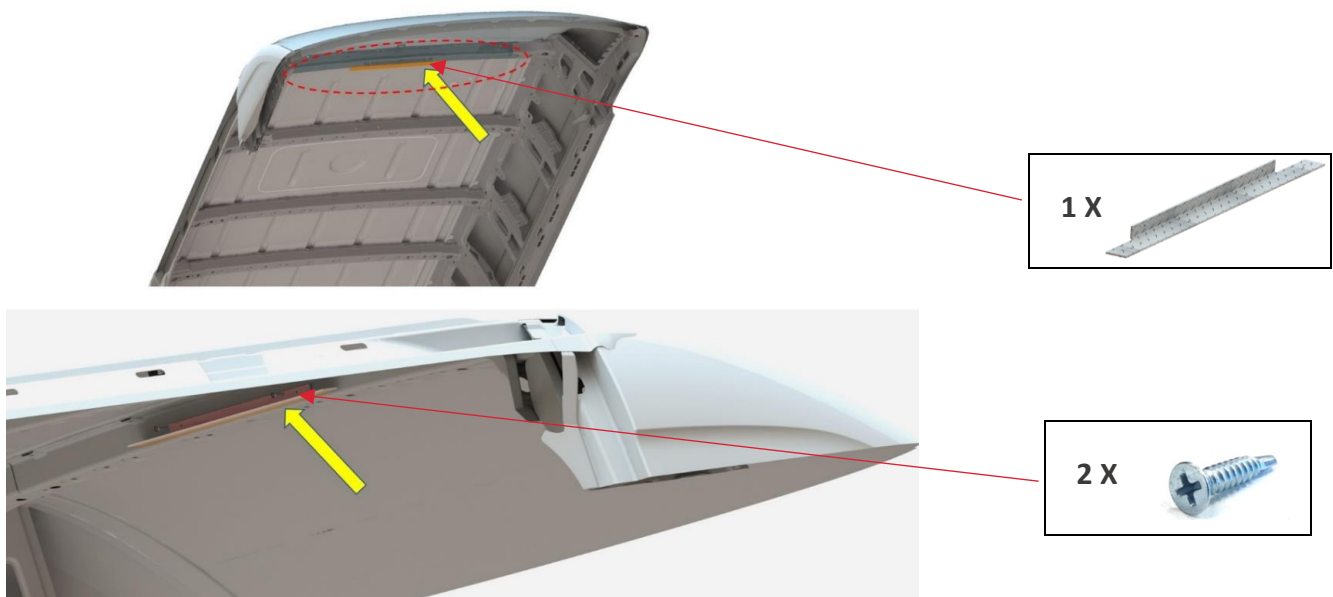


Figure 13

Step 2: Install Ceiling Piece A, as shown below.

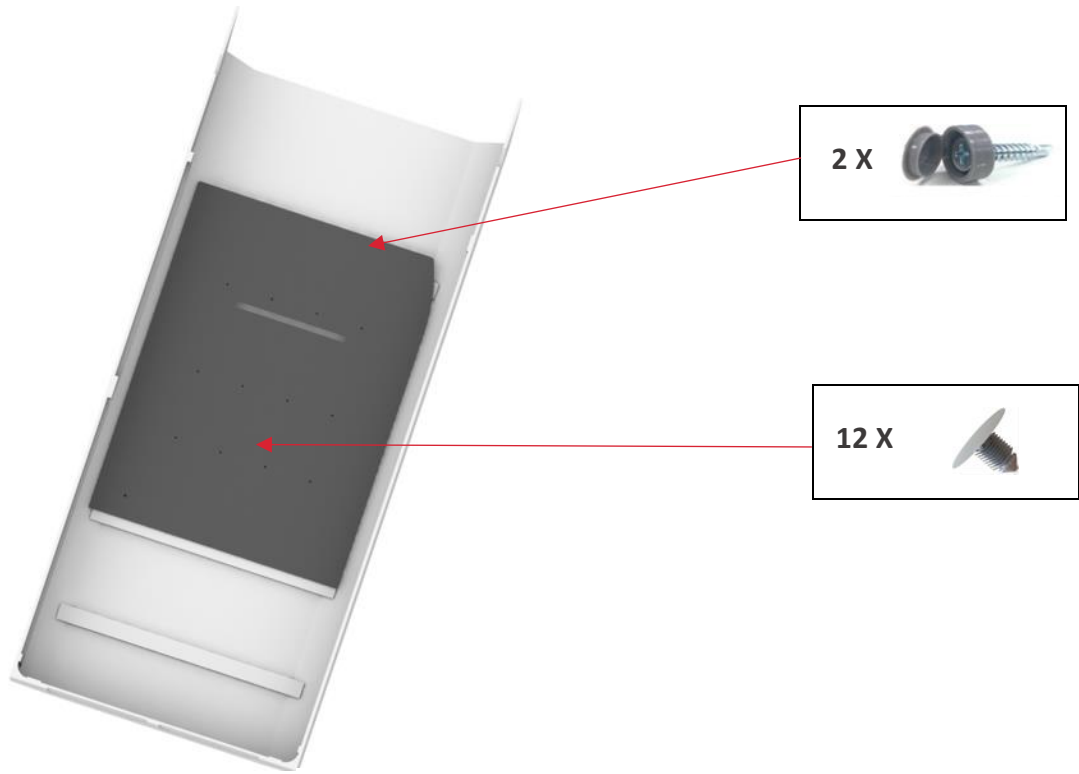


Figure 14

"Positioning and Fixing of the Ceiling Panel A" This View is from Inside of the Van

Step 3: Install the Ceiling Joiner strip at the edge of the Front Ceiling panel

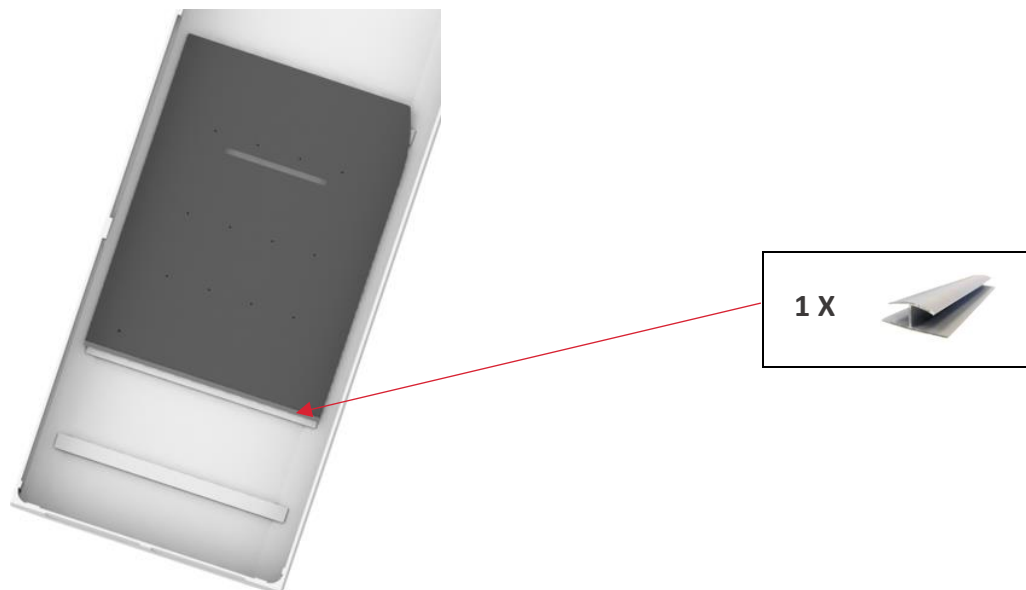


Figure 15

"Positioning and Fixing of the Ceiling Liner Strip" This View is from Inside of the Van

Step 4: Install Ceiling Piece B, as shown below. Ceiling liner.

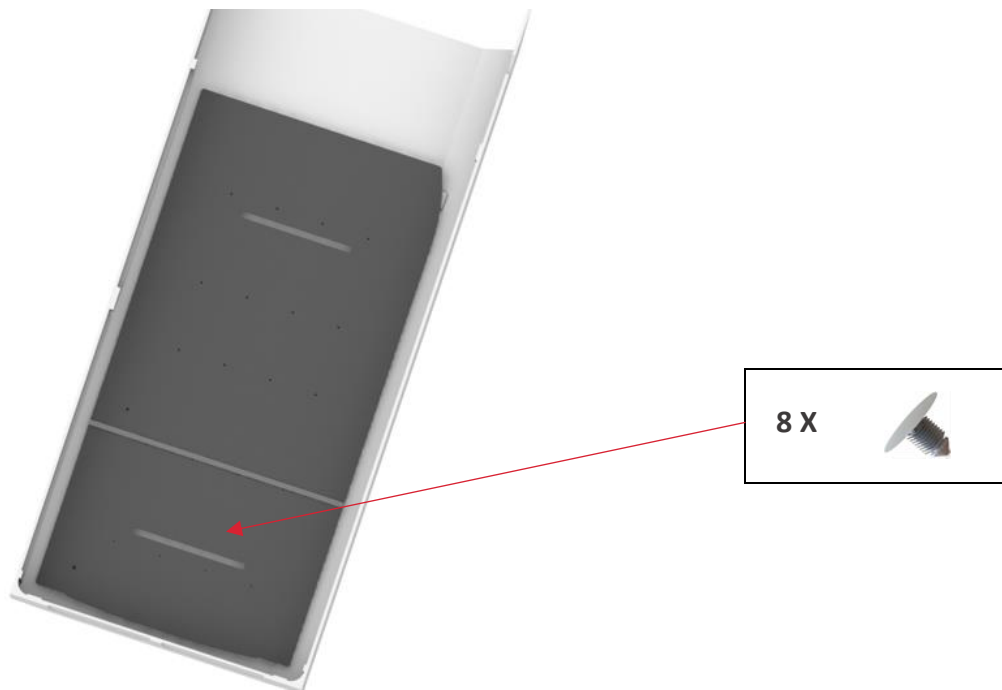


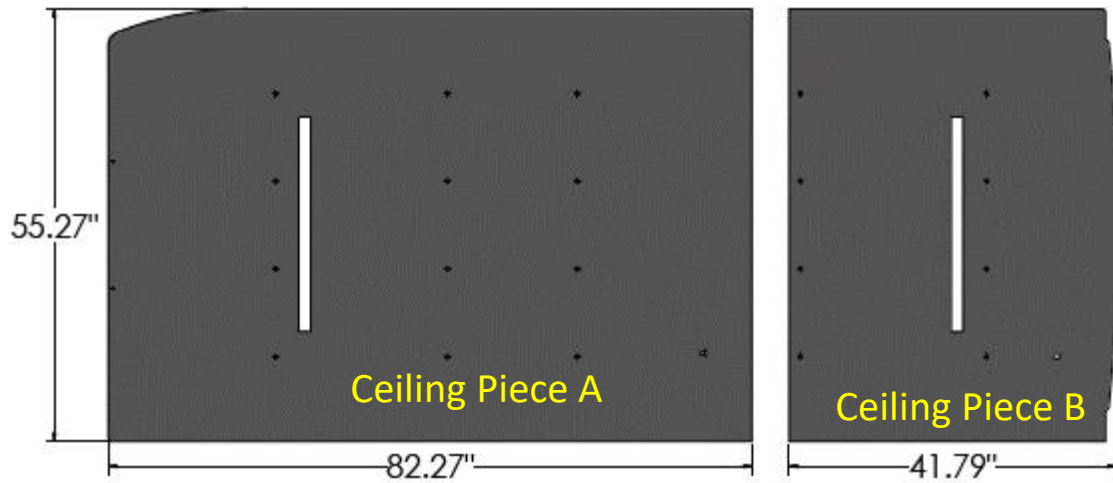
Figure 16

"Positioning and Fixing of the Ceiling Panel B" This View is from Inside of the Van

Step 5: This completes the installation of your Legend Ceiling Liner.

Ceiling Liners - 144" WB- High Roof

Parts and Hardware



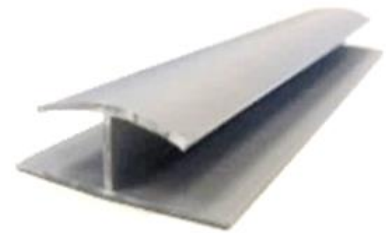
CEILING PIECES

1 X



CEILING BRACKET

1 X



CEILING JOINER STRIP (55.25")

2 X



SCREW CAP

2 X



SELF-DRILLING SCREW


20 X




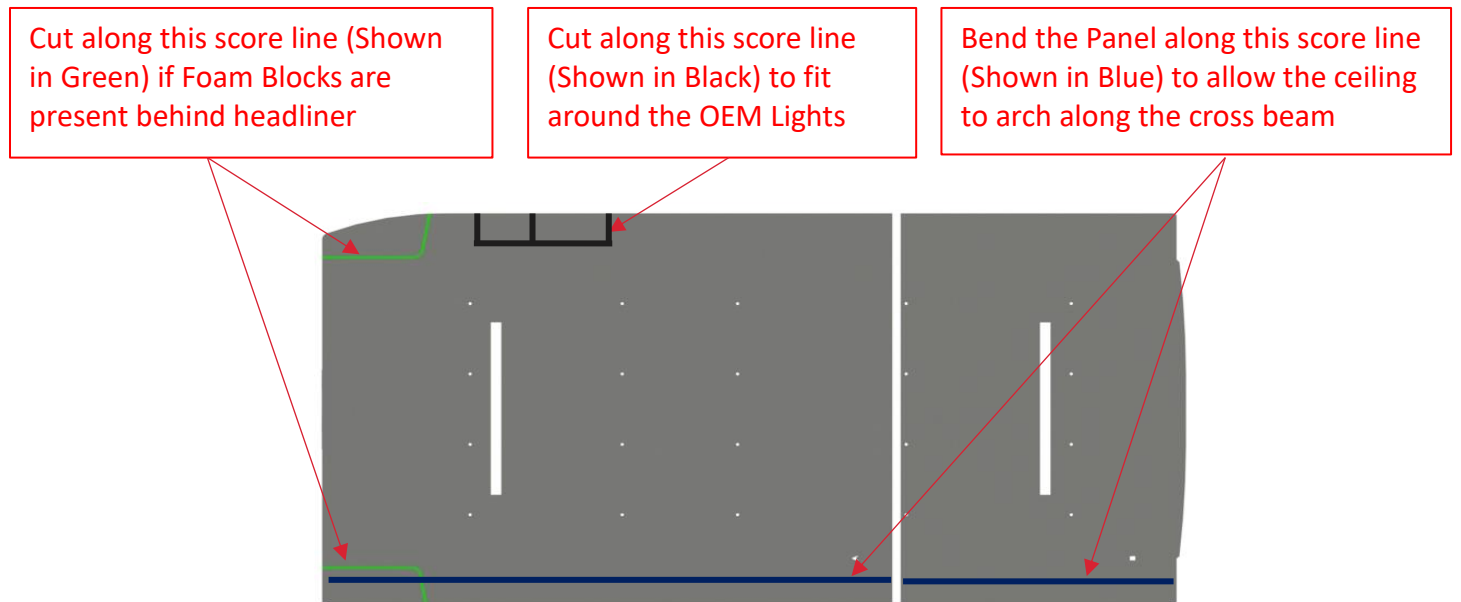
PUSH-IN RIVET

Assembly Instructions

Follow the below instructions for score lines on Rear surface of Ceiling Panel

Hole Diameter (\varnothing) = 0.40"= 

Hole Diameter (\varnothing) = 0.20"= 



Step 1: Install Ceiling Bracket to the roof as shown below.

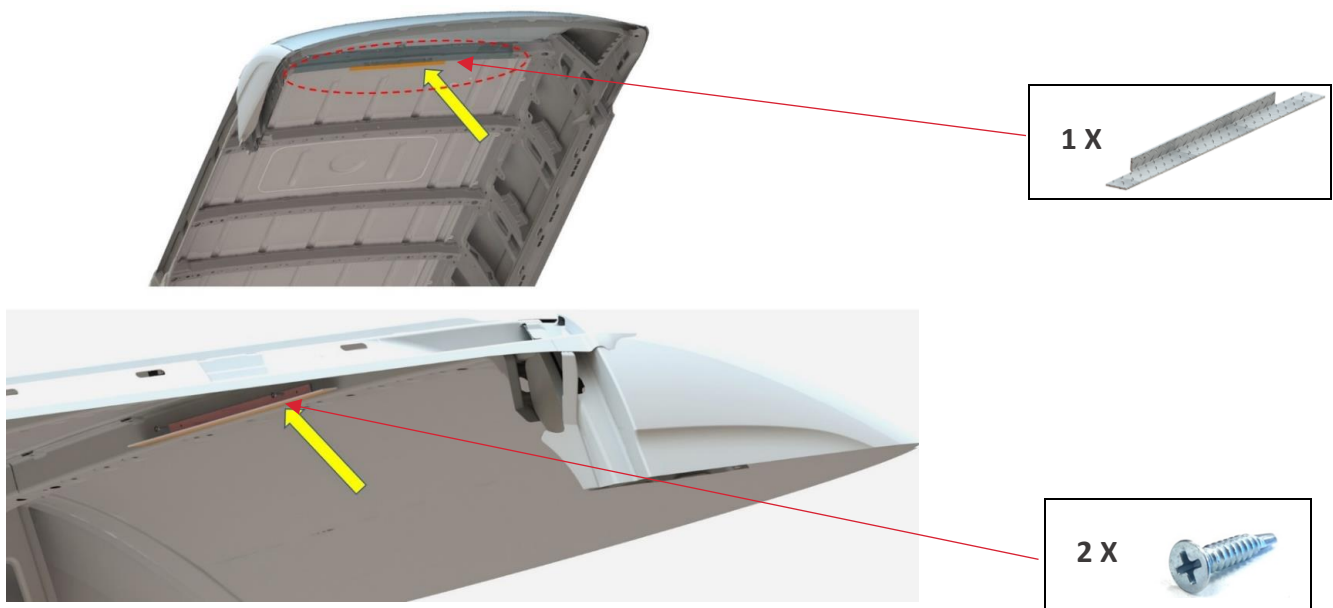


Figure 17

Step 2: Install Ceiling Piece A, as shown below.

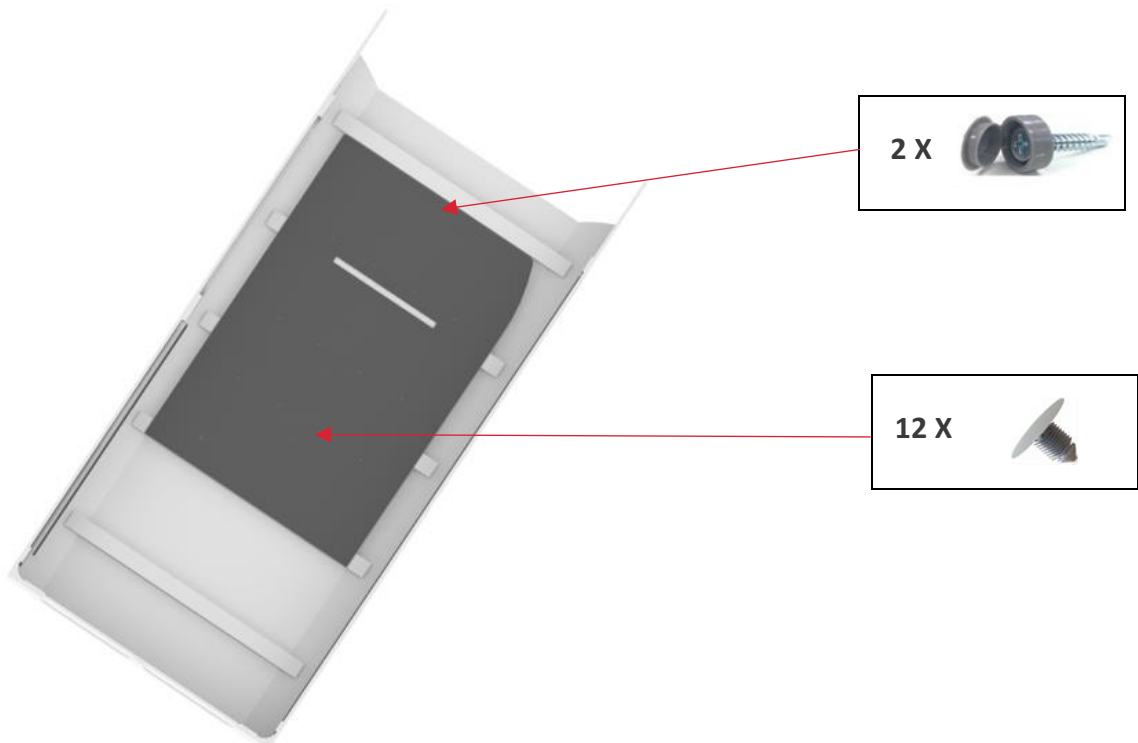


Figure 18

"Positioning and Fixing of the Ceiling Panel A" This View is from Inside of the Van

Step 3: Install the Ceiling Joiner strip at the edge of the Front Ceiling panel

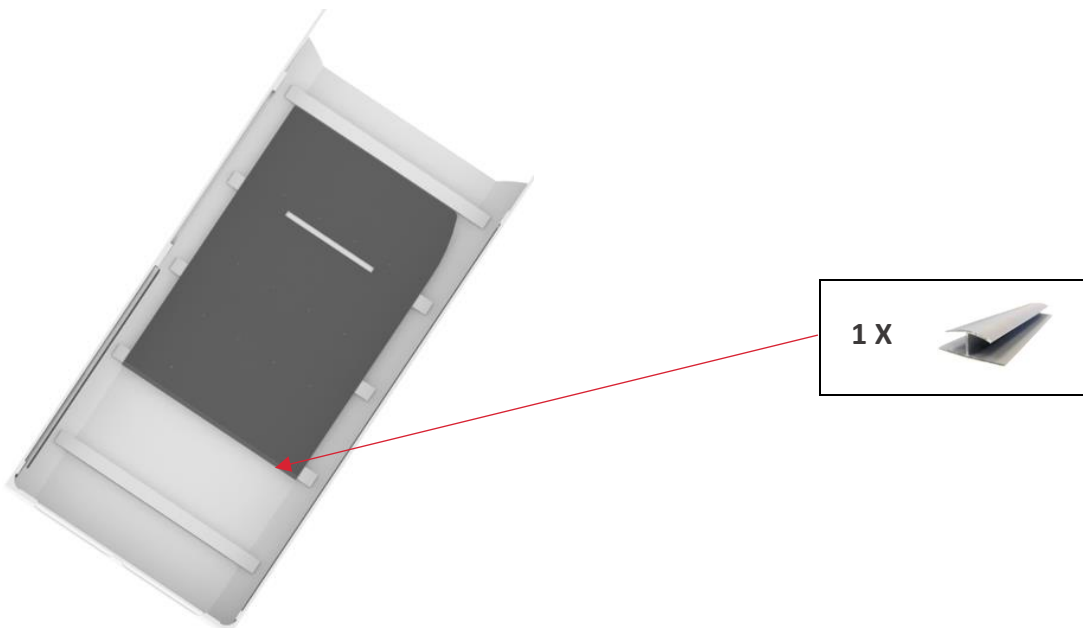


Figure 19

"Positioning and Fixing of the Ceiling Liner Strip" This View is from Inside of the Van

Step 4: Install Ceiling Piece B, as shown below. Ceiling liner.

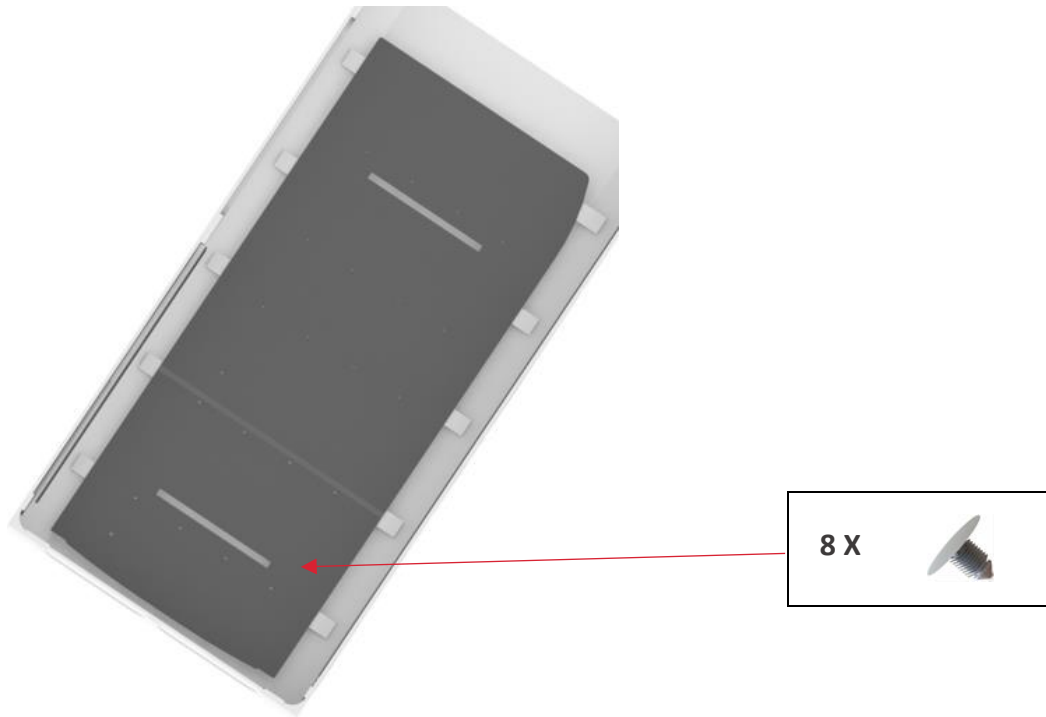


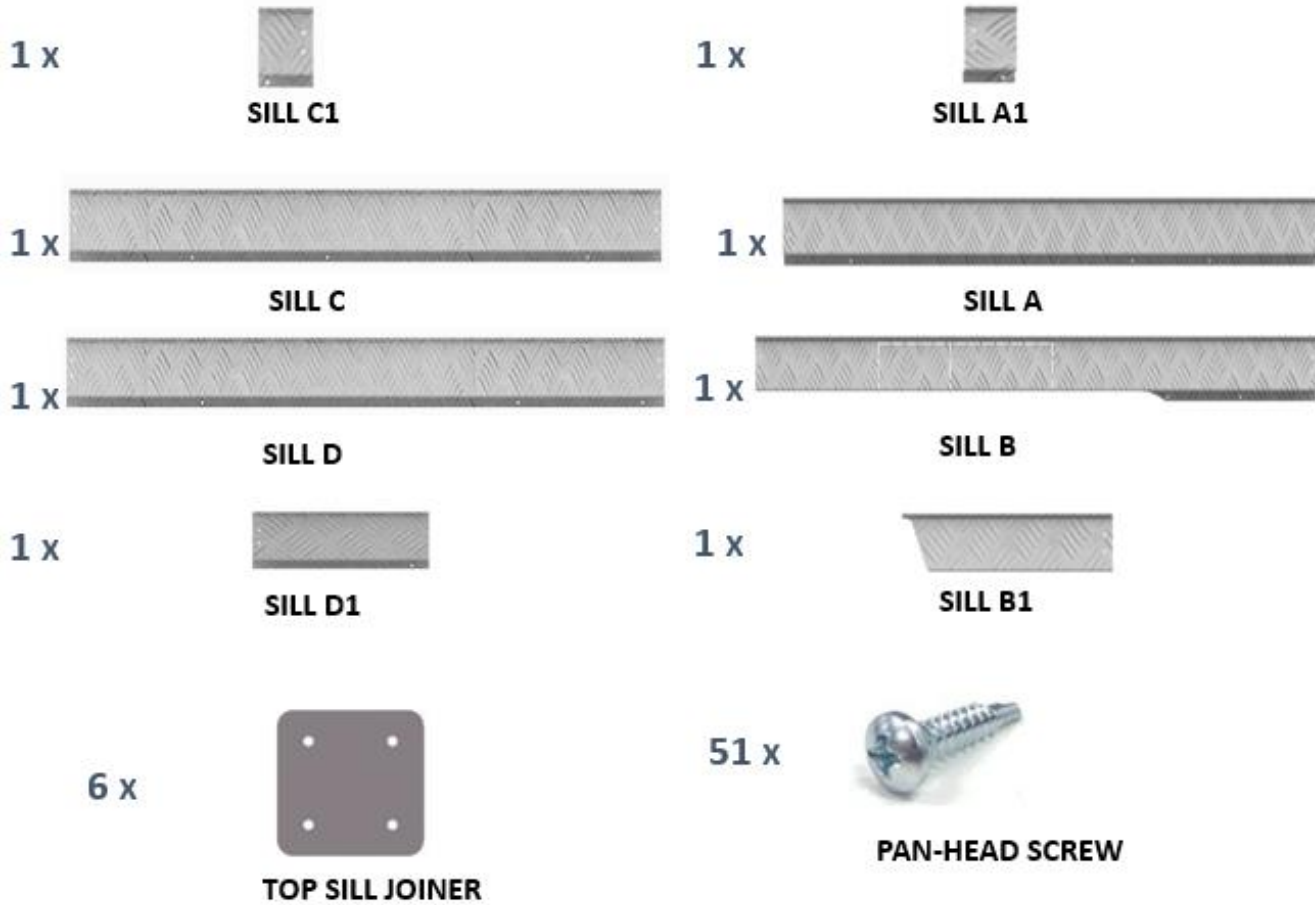
Figure 20

"Positioning and Fixing of the Ceiling Panel B" This View is from Inside of the Van

Step 5: This completes the installation of your Legend Ceiling Liner.

Top Sills - 144" WB- Low Roof

Parts and Hardware



Assembly Instructions

Assembly of the Top Sills is to be done outside of the Van before installing it in the Van.

Step 1: Assemble Driver Side sill – C1, C, D, D1 as shown below.

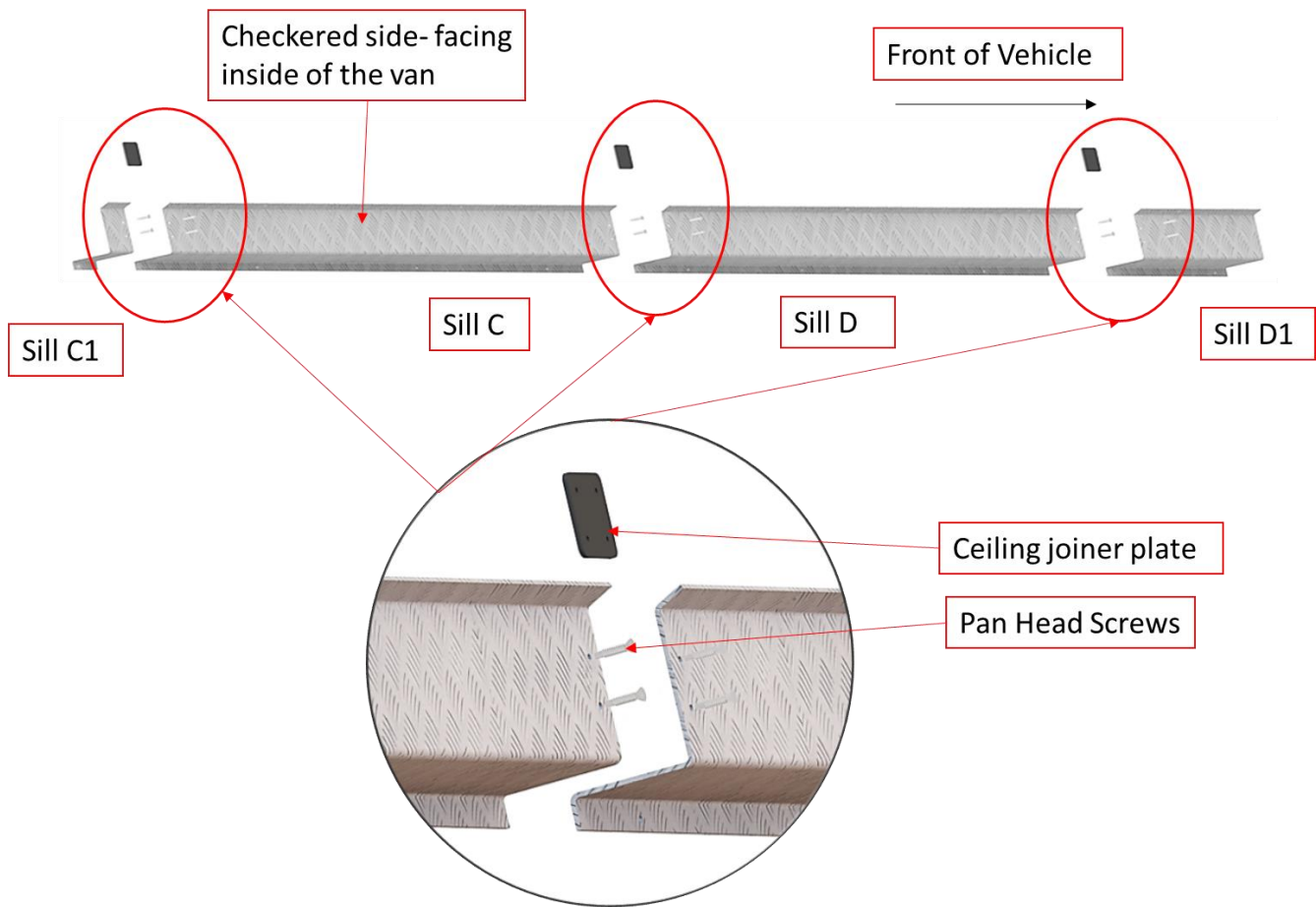


Figure 21

Step 2: Fasten assembled sills in the Van.

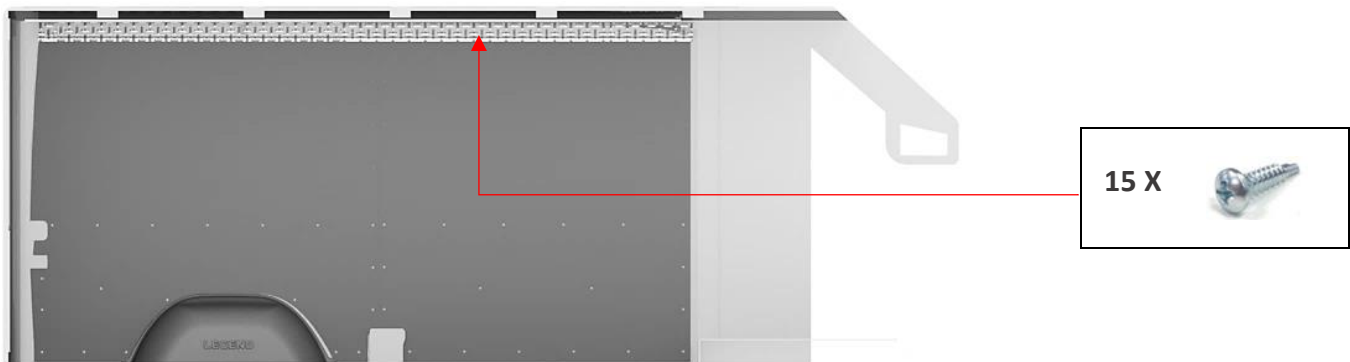


Figure 22
"Driver side Top Sills installed"

Step 3: Assemble Passenger Side Sill – A1, A, B, B1 as shown below.

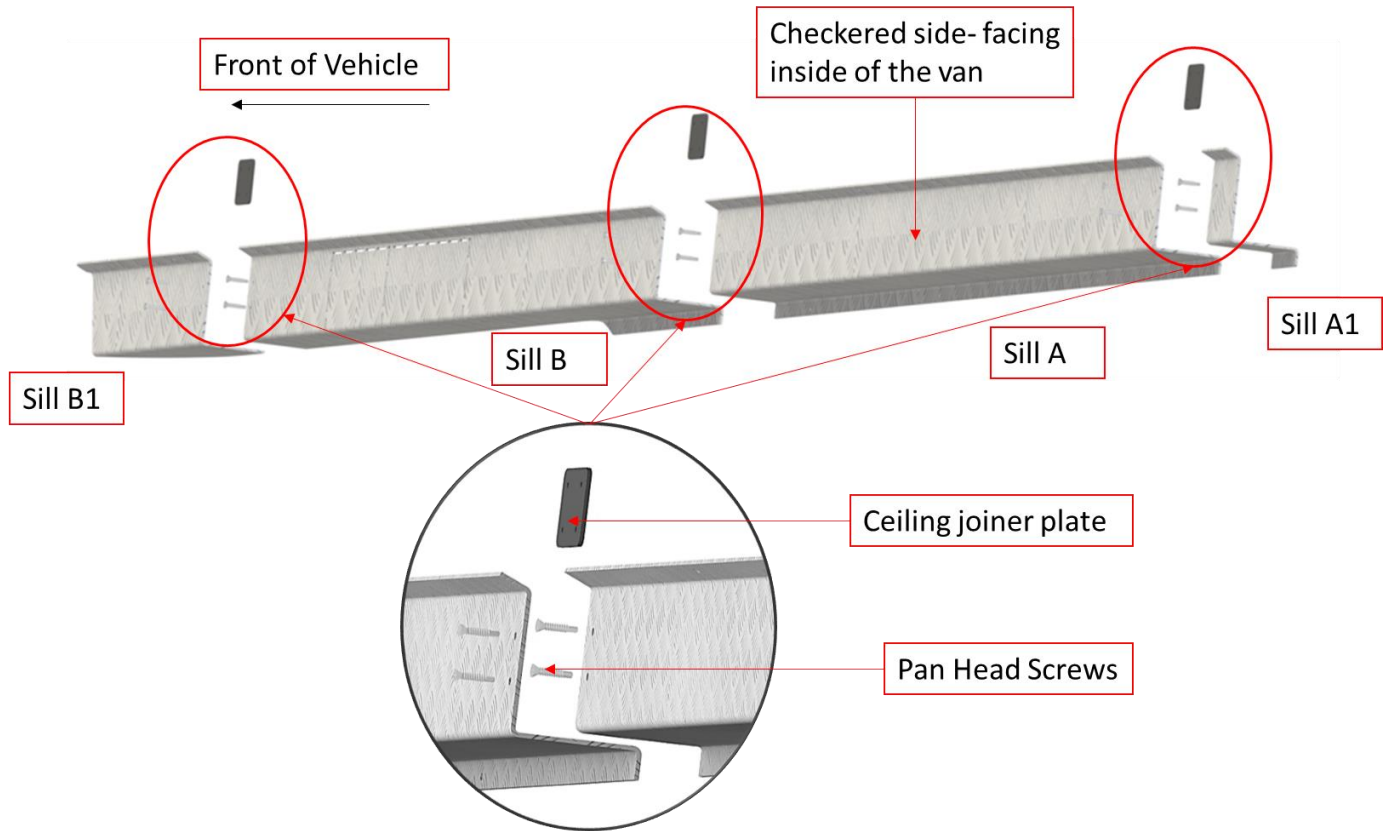


Figure 23

Step 4: Fasten assembled sills in the Van.

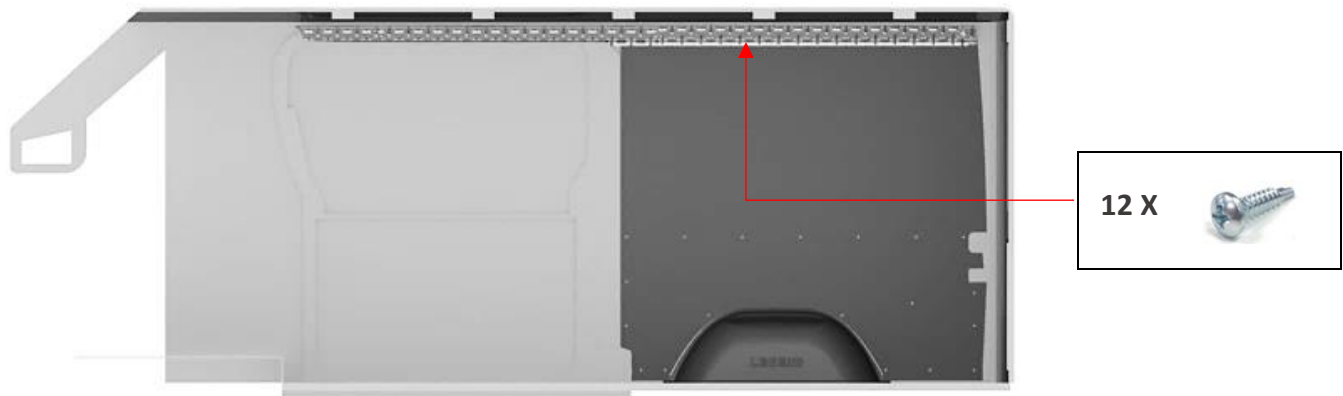
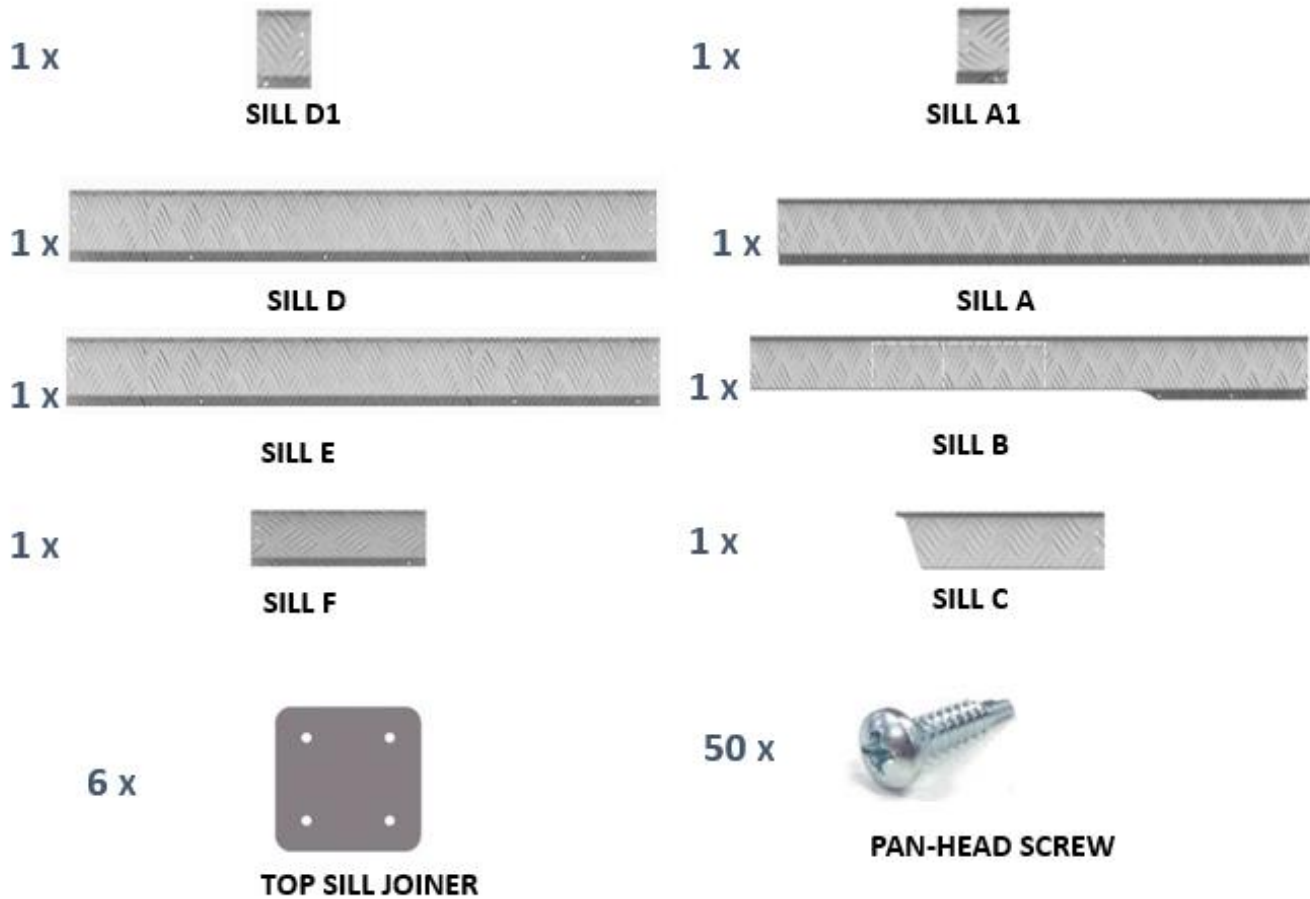


Figure 24
"Passenger side Top Sills installed"

Top Sills - 144" WB- High Roof

Parts and Hardware



Assembly Instructions

Assembly of the Top Sills is to be done outside of the Van before installing it in the Van.

Step 1: Assemble Driver Side sill – D1, D, E, F as shown below.

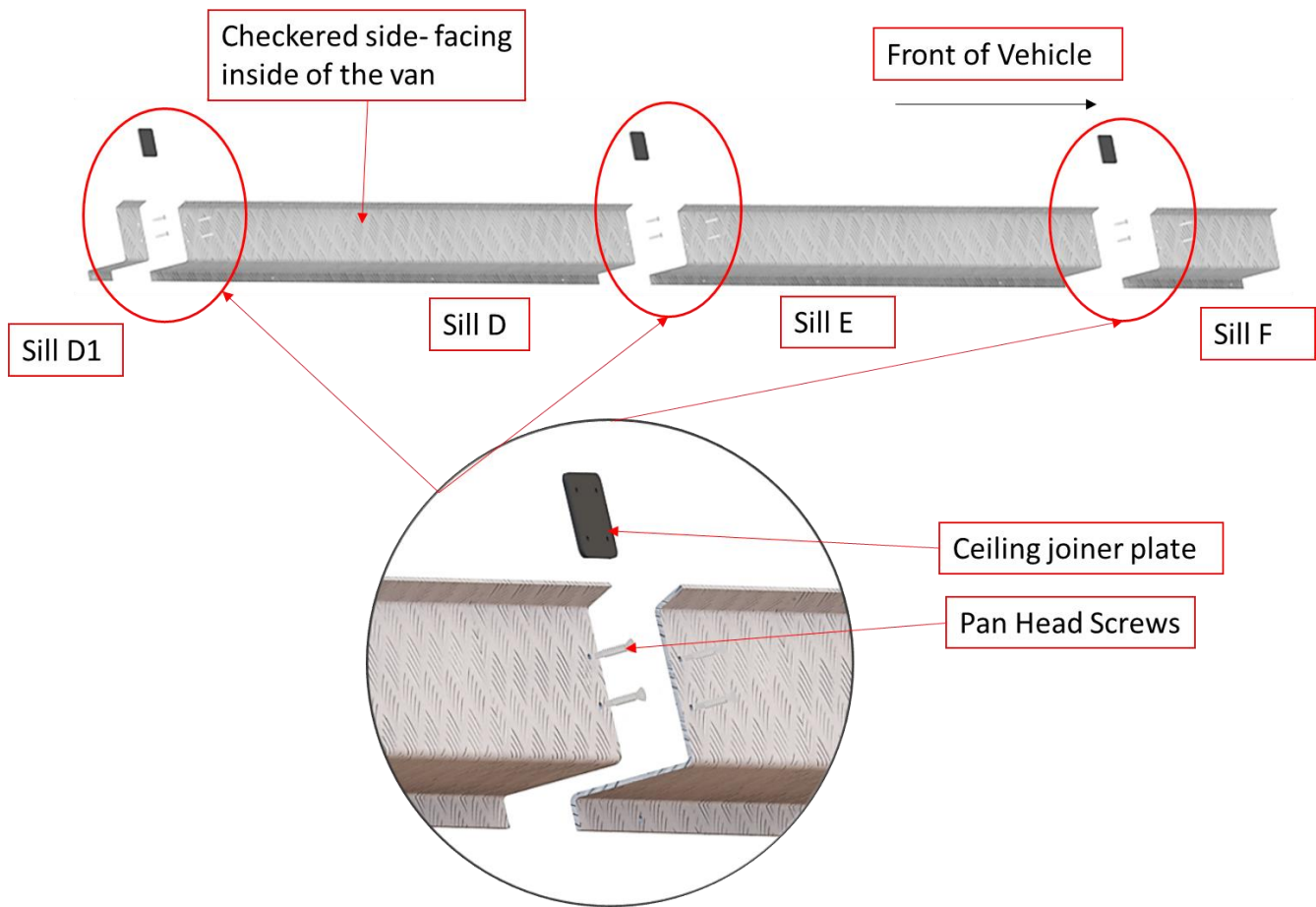


Figure 25

Step 2: Fasten assembled sills in the Van.

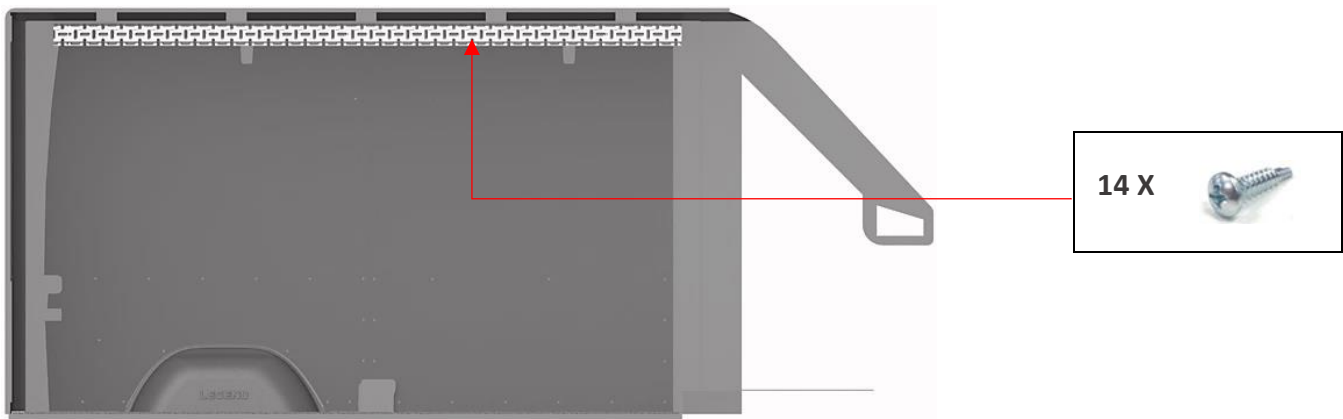


Figure 26
"Driver side Top Sills installed"

Step 3: Assemble Passenger Side Sill – A1, A, B, C as shown below.

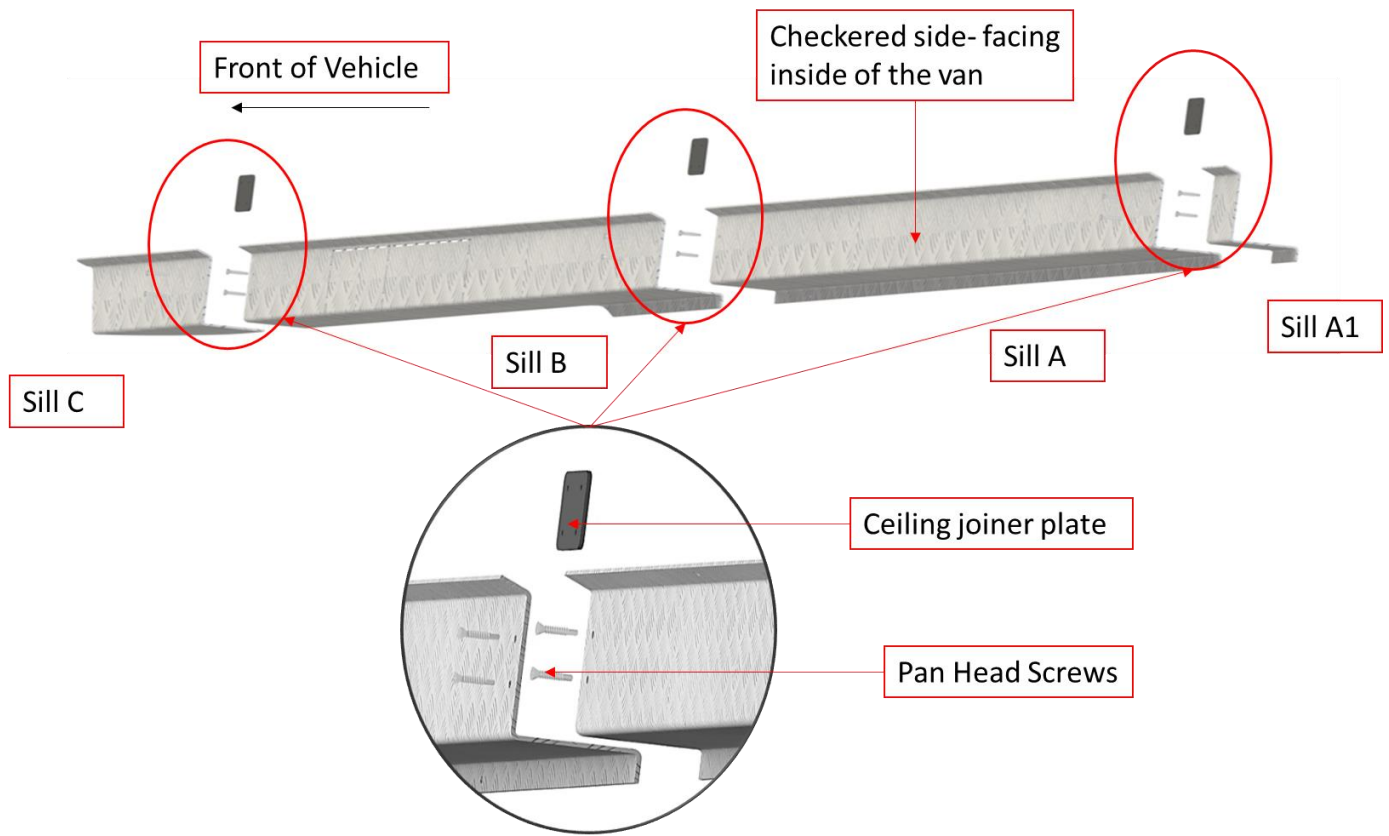


Figure 27

Step 4: Fasten assembled sills in the Van.

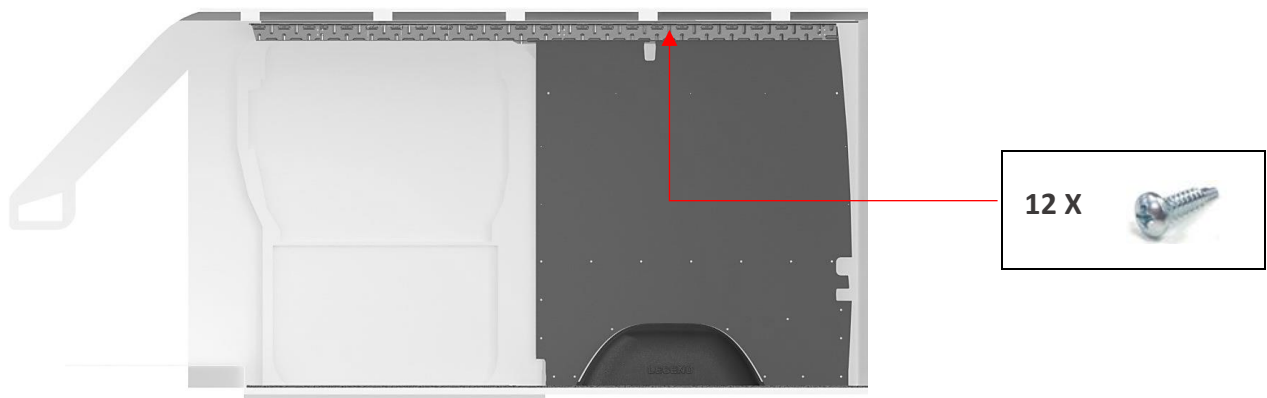
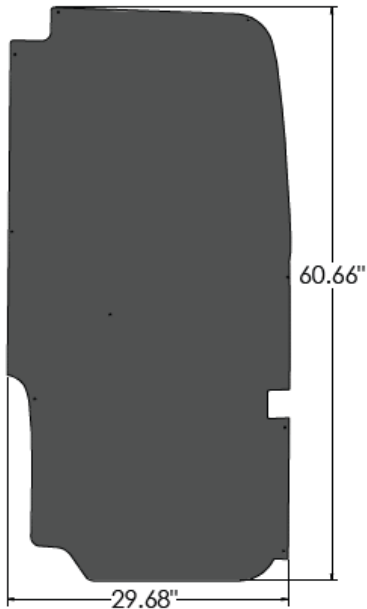


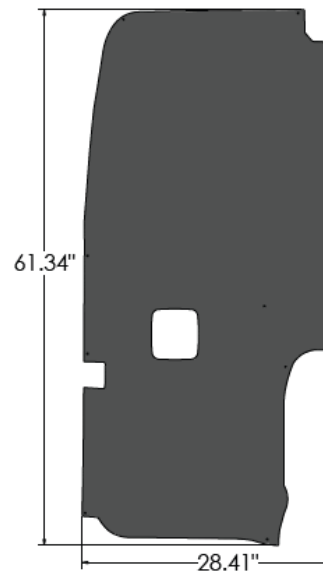
Figure 28
"Passenger side Top Sills installed"

Door Liners - 144" WB- Low Roof

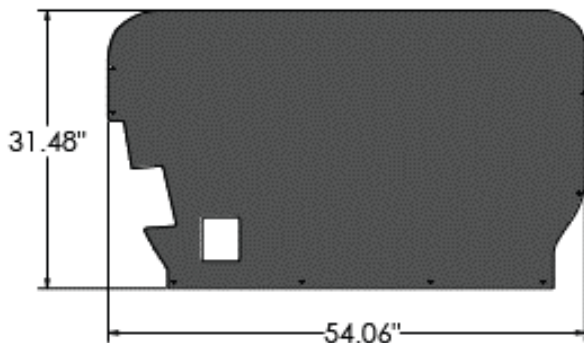
Parts and Hardware



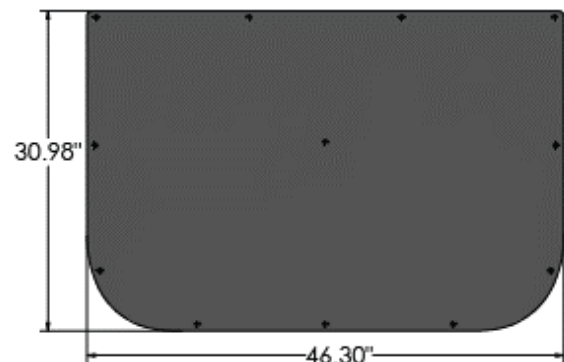
DRIVER SIDE REAR DOOR LINER(DRA)



PASSENGER SIDE REAR DOOR LINER(PRA)



PASSENGER SIDE SLIDING DOOR LINER (PSB)



PASSENGER SIDE SLIDING DOOR LINER (PSA)



27 x

SCREWCAP



27 x

SELF-DRILLING SCREW



12 x

PUSH-IN RIVETS

Assembly Instructions

Van Doors MUST be in close Position When Installing Door Liners.

Hole Diameter (\varnothing) = 0.40"=



Hole Diameter (\varnothing) = 0.20"=



Step 1: Rear Door Assembly.

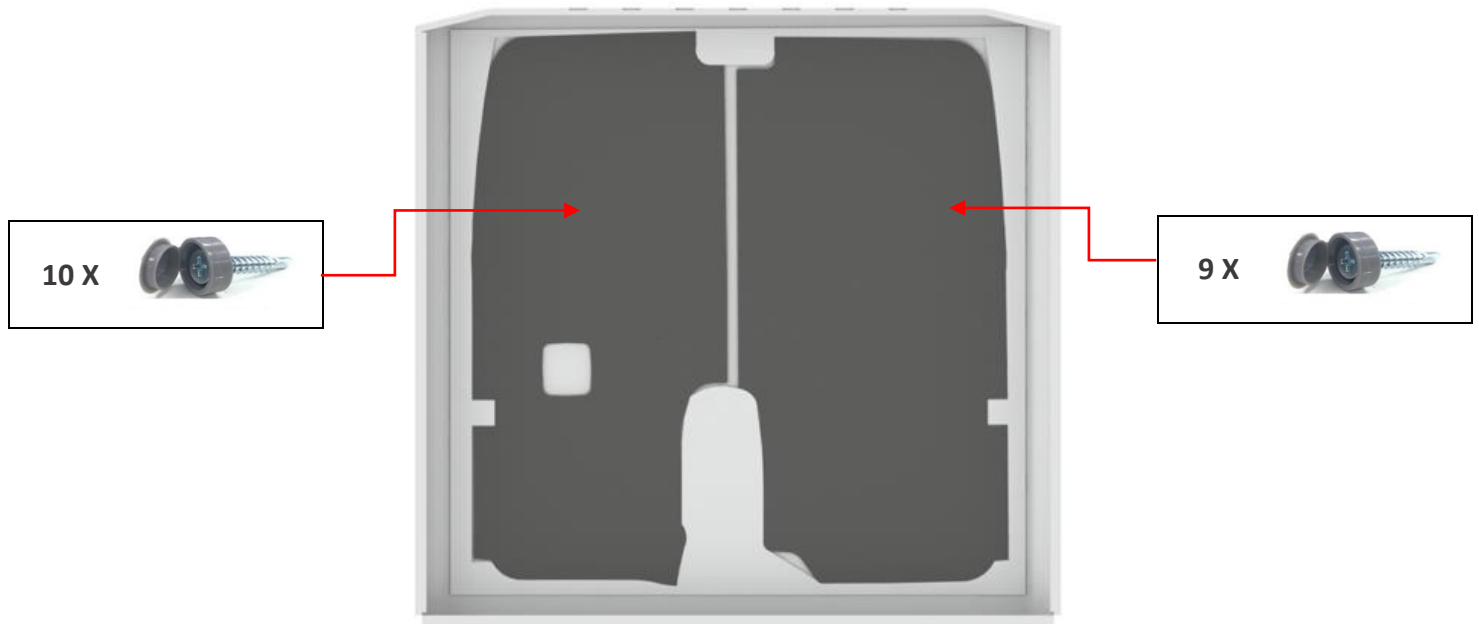


Figure 29
"Rear Door Liners Installed"

Step 2: Side Door Assembly.

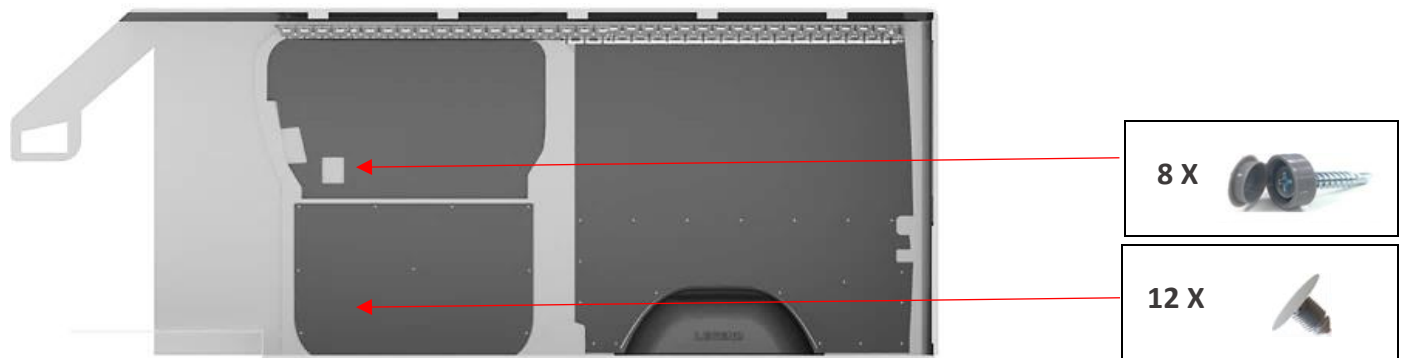
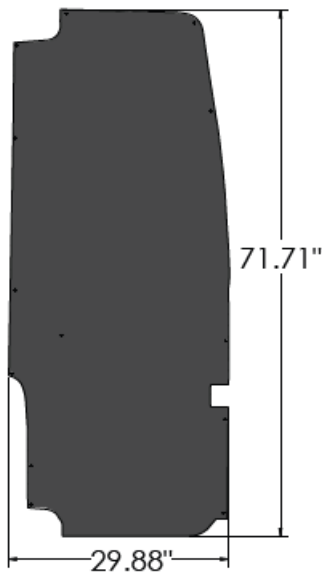


Figure 30
"Passenger Side Sliding Door Liner Installed"

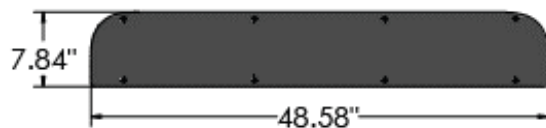
Step 3: Installation of your Legend Door Liners is now complete.

Door Liners - 144" WB- High Roof

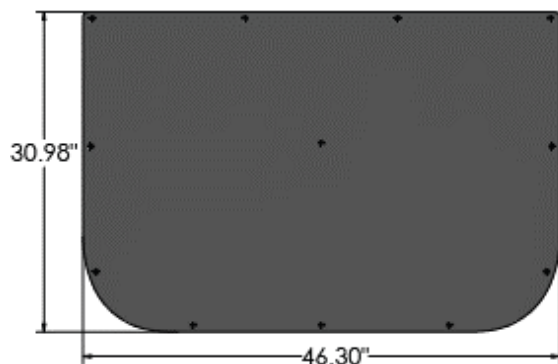
Parts and Hardware



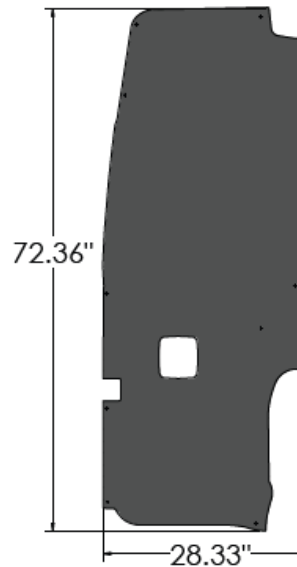
DRIVER SIDE REAR DOOR LINER(DRA)



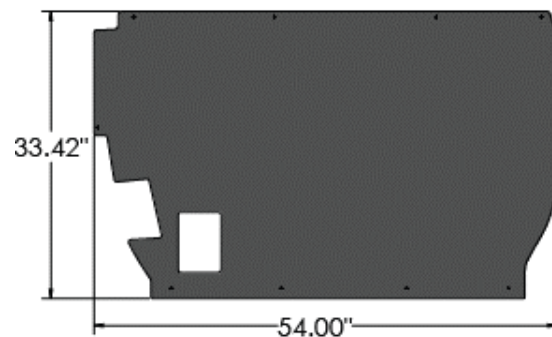
PASSENGER SIDE SLIDING DOOR LINER (PSC)



PASSENGER SIDE SLIDING DOOR LINER (PSA)



PASSENGER SIDE REAR DOOR LINER(PRA)



PASSENGER SIDE SLIDING DOOR LINER (PSB)

20 X



PUSH-IN RIVETS

33 X



SELF-DRILLING SCREW


33 X




SCREWCAP

Assembly Instructions

Van Doors MUST be in close Position When Installing Door Liners.

Hole Diameter (\varnothing) = 0.40"= 

Hole Diameter (\varnothing) = 0.20"= 

Step 1: Rear Door Assembly.

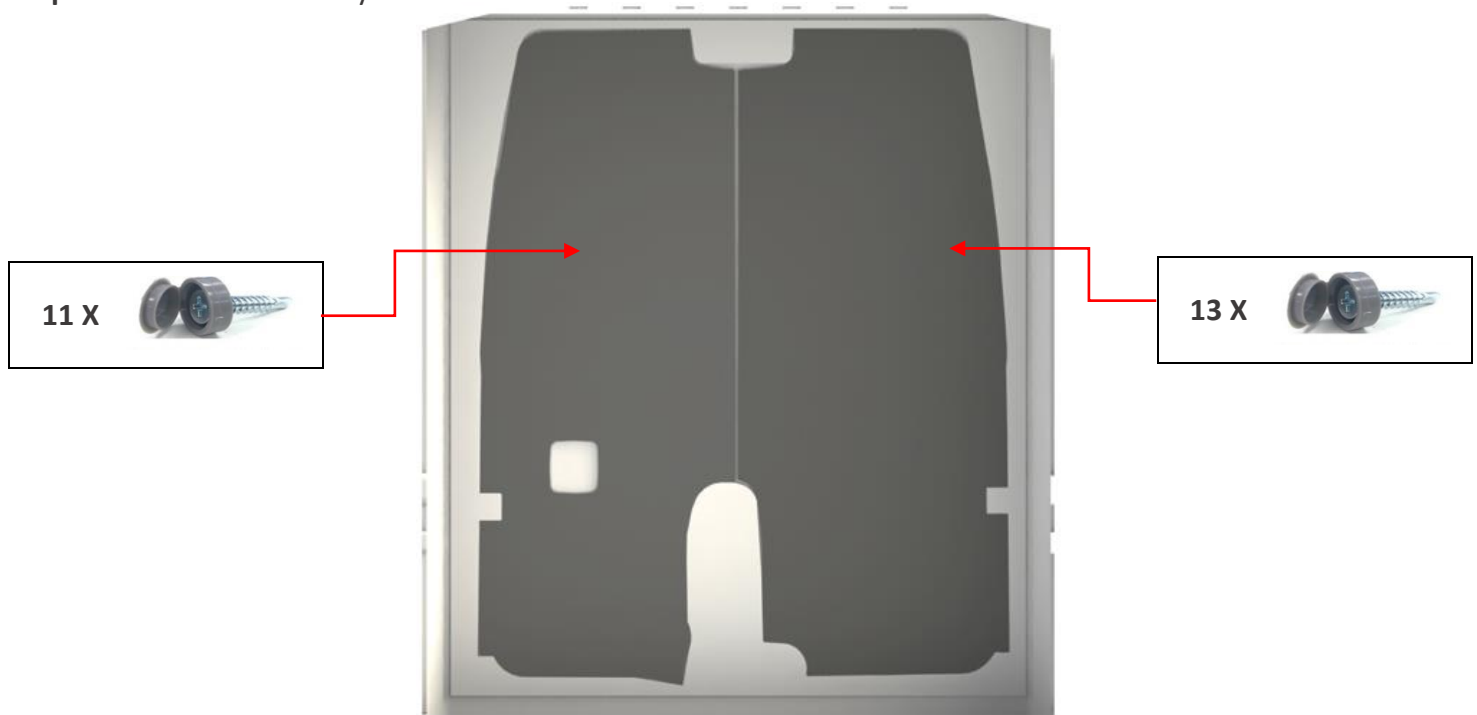


Figure 31
"Rear Door Liners Installed"

Step 2: Side Door Assembly.

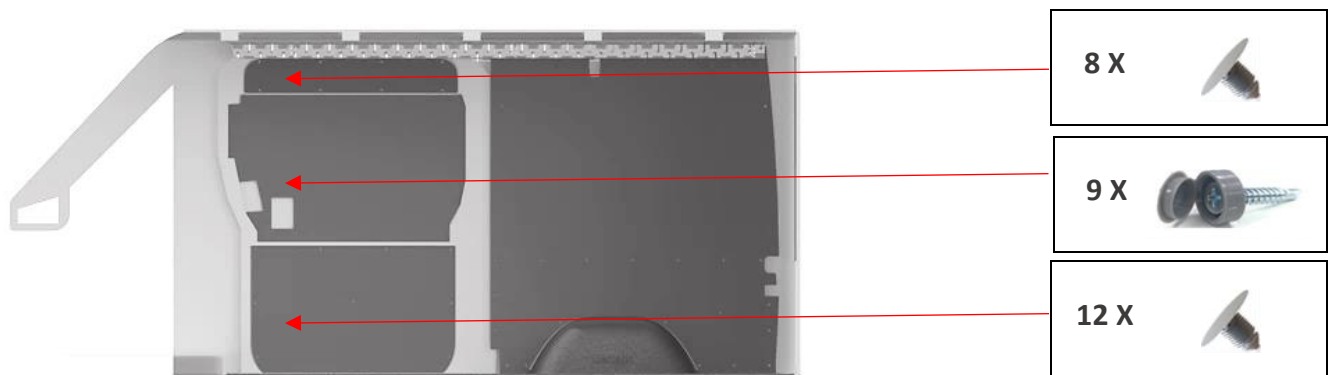


Figure 32
"Passenger Side Sliding Door Liner Installed"

Step 3: Installation of your Legend Door Liners is now complete.