

LEGEND FLEET SOLUTIONS

RAM PROMASTER 159" WB-Extended INSTALLATION INSTRUCTIONS



Table of Contents

	Page #
1. Wheel Well Covers.....	2-3
2. Floor.....	4-6
3. Floor Sills.....	7-8
4. Wall Liners.....	9-11
5. Ceiling Liner.....	12-14
6. Top Sills.....	15-17
7. Door Liners.....	18-20

WHEEL WELL COVERS

Parts & Hardware:

1. Driver Side's Wheel Well Cover (Qty=1) (Black Colored and Insulated)
2. Passenger Side's Wheel Well Cover (Qty=1) (Black Colored and Insulated)
3. Push-In Rivets (Qty=14)



Imprint of letter 'D' on Rear Side, representing Driver Side's WWC



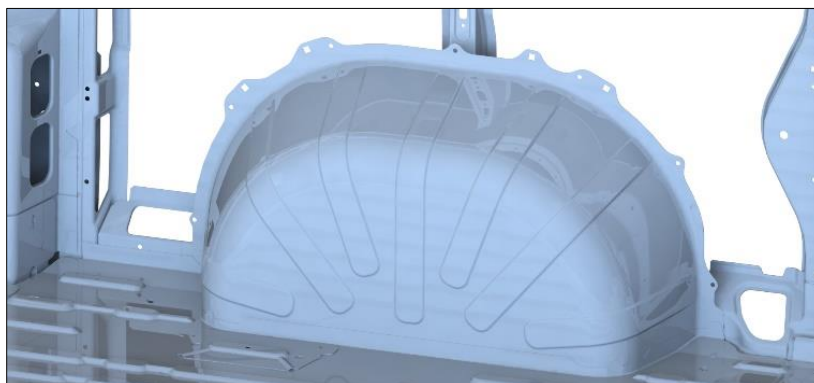
Imprint of 'Pass' on Rear Side, representing Passenger Side's WWC



INSTRUCTIONS:

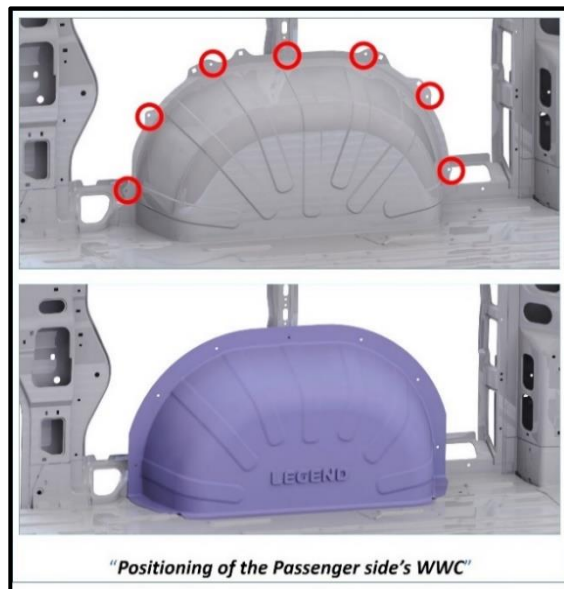
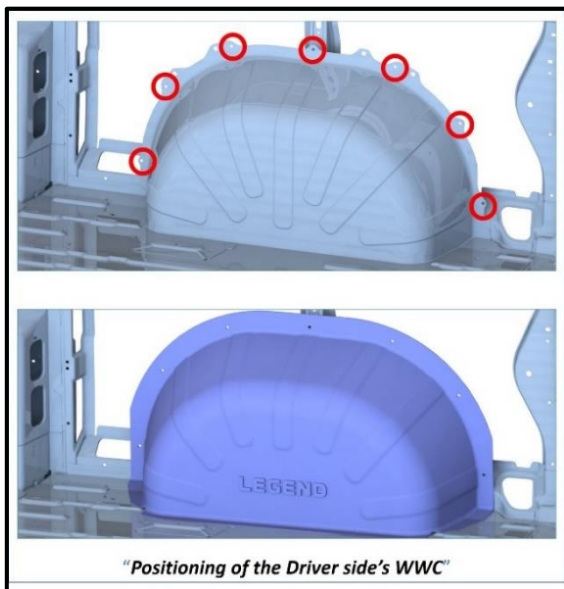
1. Remove all or portion of the plastic trim on the walls and floor around the wheel well area to allow Legend's Wheel Well Covers to fit in.

Note : The top and bottom flanges of the Legend Wheel Well Covers need to be in contact with metal of the van at all times. So, any flooring or wall liners from Legend need to be installed in the van after 'Step 2'.



"Vehicle's bare metal around the wheel well areas" This is view from inside the vehicle

2. Place the Driver side's and Passenger side's wheel well covers in the vehicle. Align the seven holes on the wheel well cover to the seven circular holes highlighted in red color, as shown in the pictures below.

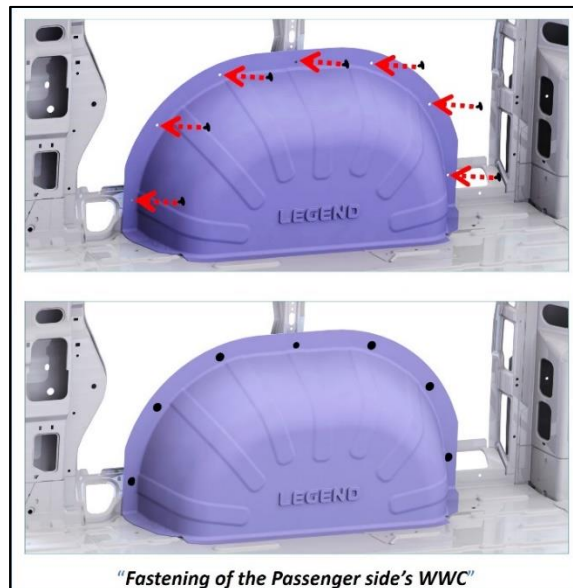
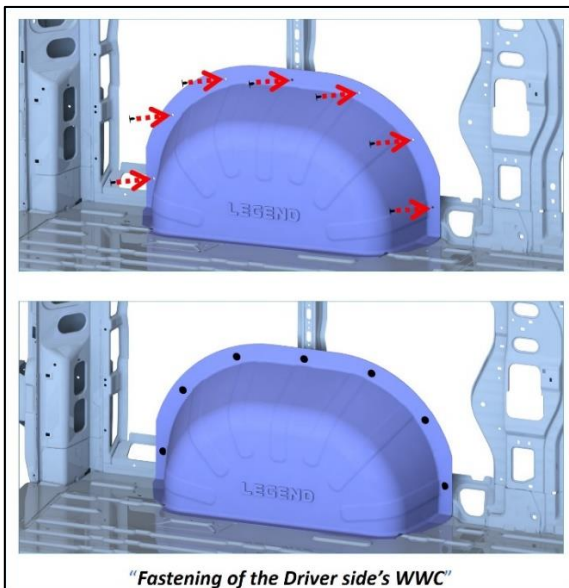


3. Fasten each wheel well cover in place using seven fasteners at the seven holes present on each wheel well cover, as shown in the picture below.

Note :

If also installing the Flooring and Wall Panels from Legend:

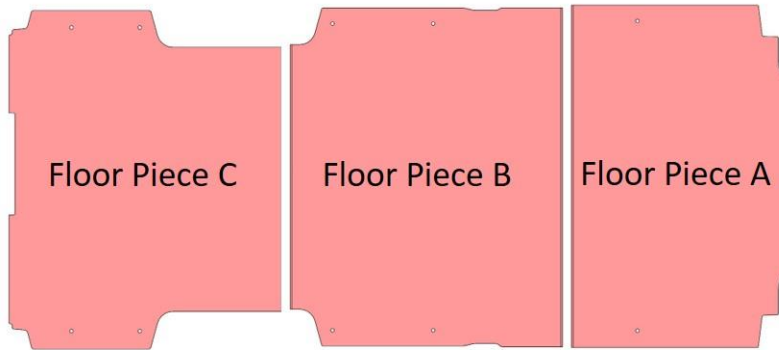
- Place the wheel well covers in position as shown in 'step 2', but do not fasten (as in step 3) until Walls and Floor are in place.
- Wheel Well Flanges/borders will always be hidden behind the flooring and wall panels.
- The Wheel Well Covers will be secured with Legend Wall Liners hardware holding both the Wheel Well Cover and Wall Panels to the Vehicle.



FLOOR

Parts & Hardware:

1. Floor Pieces
(Qty=1 Each)



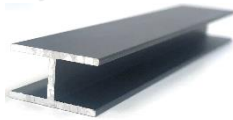
2. M8 Bolt
(Qty=10)



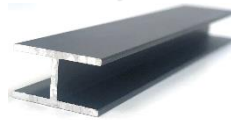
3. M8 Flat Washer
(Qty =10)



4. Front Rail Joint (Length-70.74")
(Qty=1)

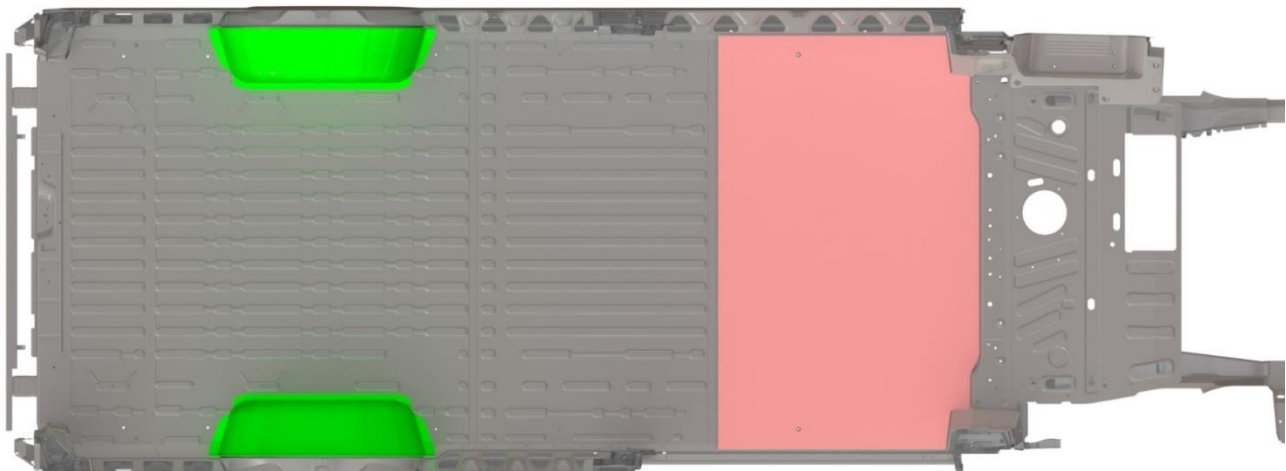


5. Rear Rail Joint (Length-55.22")
(Qty=1)



INSTRUCTIONS:

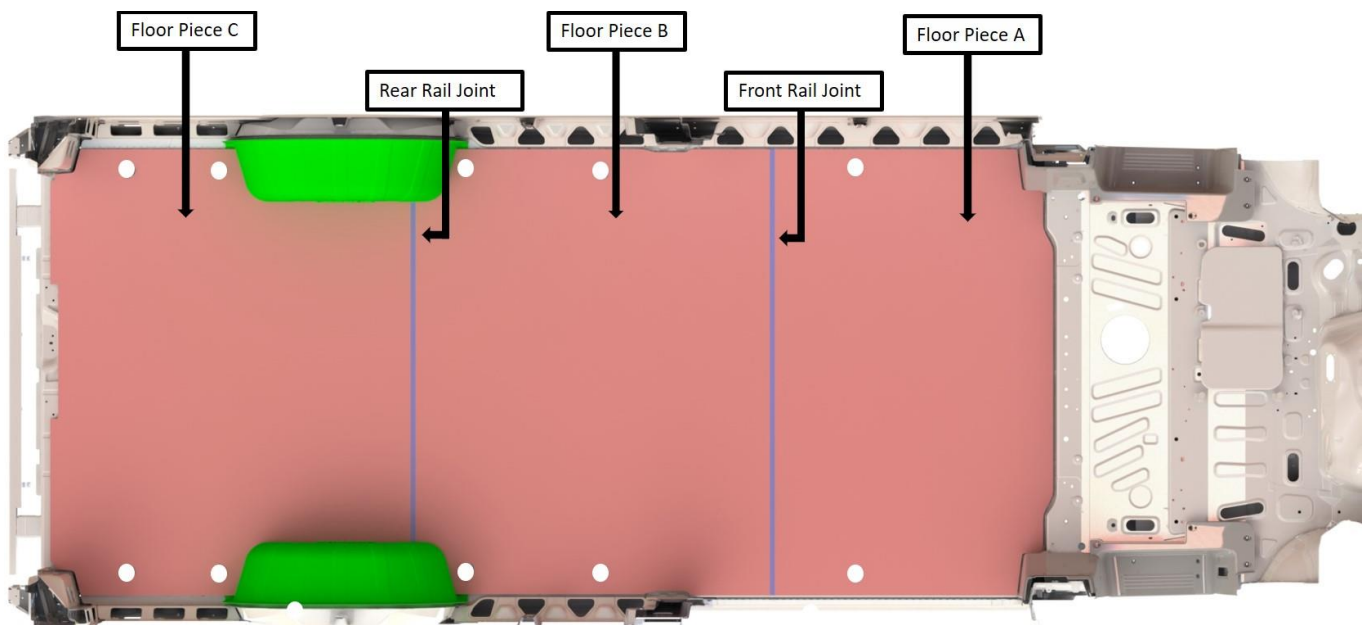
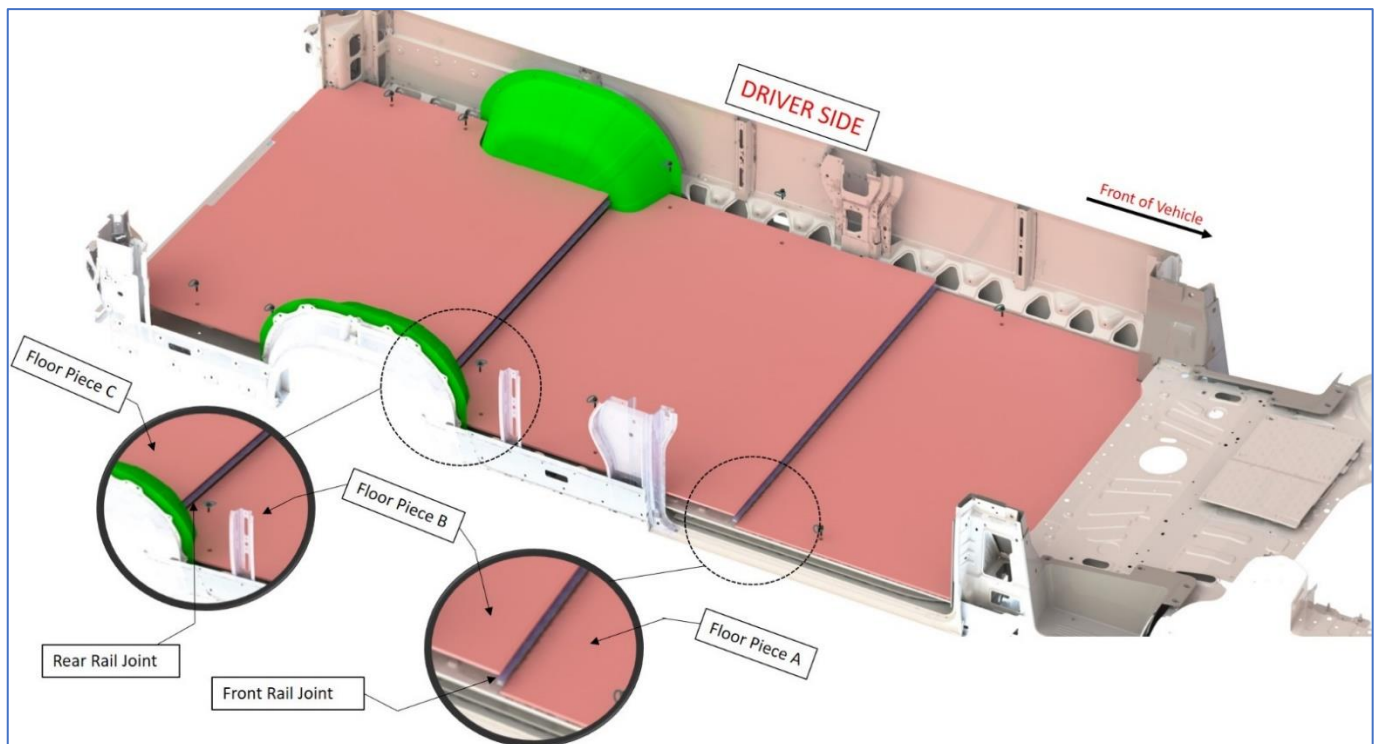
1. Remove all the OEM Plastic Trim and OEM D-Rings or tie-downs, and any other parts present on the Vehicle's Floor.
2. Bring Legend's Floor Piece A (Front Piece of Floor) into the vehicle and place it as shown in the picture below, aligning the front contour (or, shape) of the floor with the contour of the vehicle's metal floor.



"Positioning of the floor piece A" This view is from Inside of Van-Viewing from Top

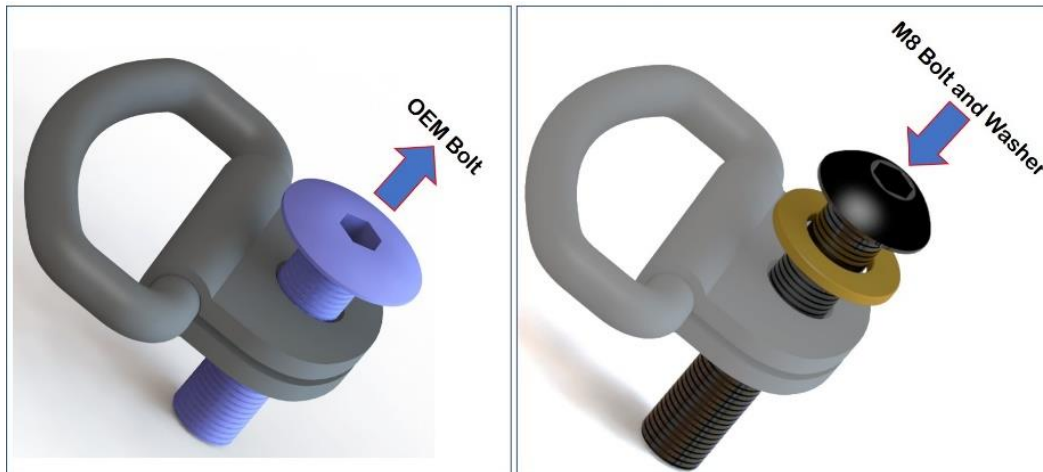
3. Install the Parts in the following order after installing Floor Piece A
Front Rail Joint ➡ Floor Piece B ➡ Rear Rail Joint ➡ Floor Piece C, as shown in the pictures below.

NOTE : A Rubber Mallet may be used to align the parts and to obtain a perfect fit between them.

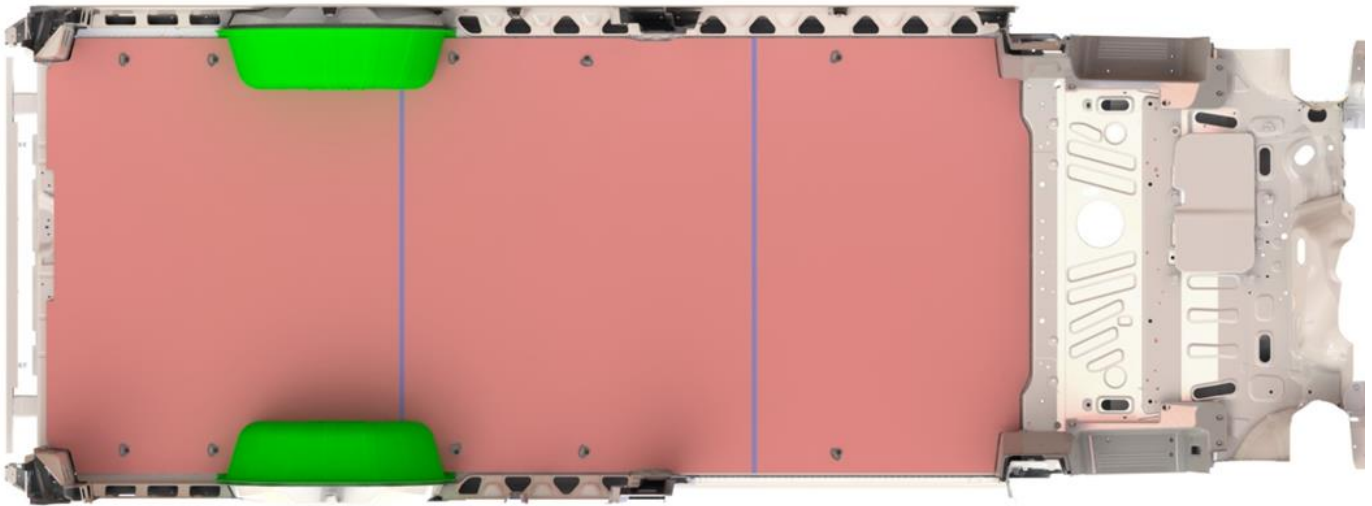


"Positioning and Fixing Floor" This view is from Inside of Van-Viewing from Top

4. Replace the bolts of all the OEM D-Rings with M8 Bolt and Flat Washer provided in Hardware Kit, as instructed in the image below.



5. Reinstall these modified D-Rings in the vehicle, thus completing the installation of Legend Floor in the vehicle.



"Floor Installed" This view is from Inside of Van-Viewing from Top

FLOOR SILLS

Parts & Hardware:

1. Side Sill (Qty=1)



2. Rear Step Sill (Qty=1)



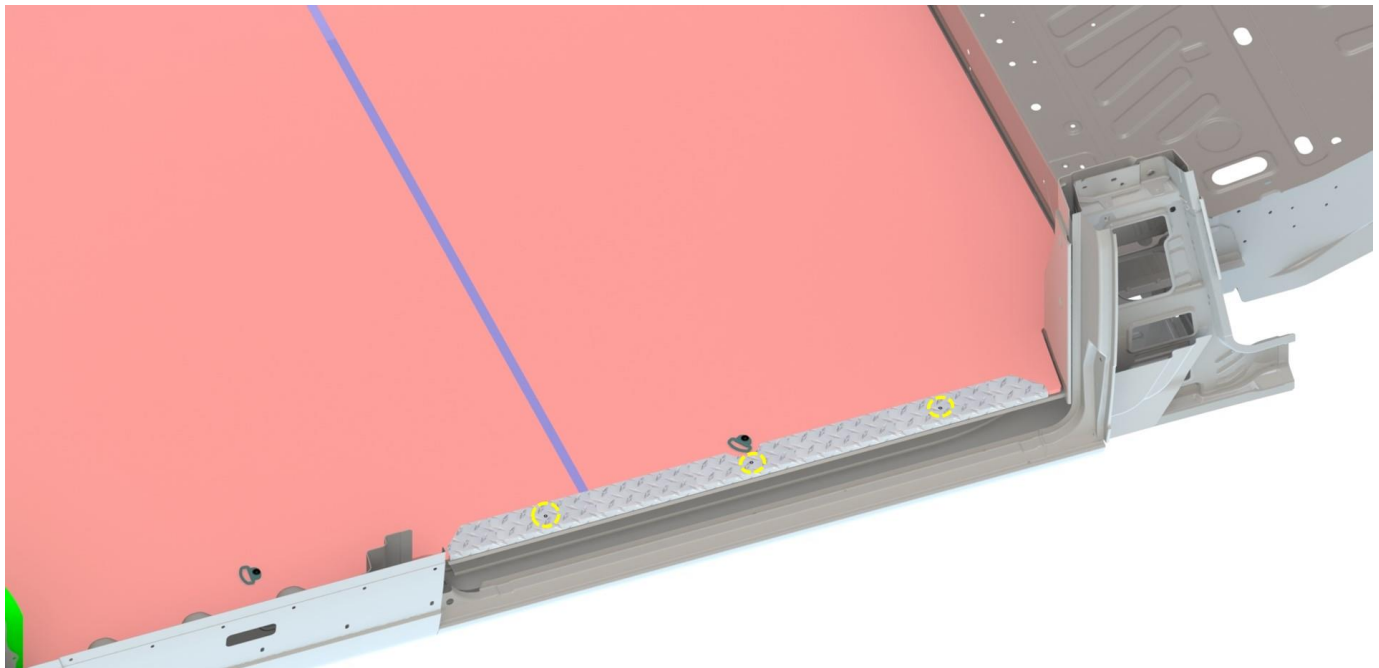
3. Pan-Head Screw (Qty=6)



INSTRUCTIONS:

1. Position the Side Sill on Legend's Floor and fix it using 3 Pan-Head Screws as shown in the picture below.

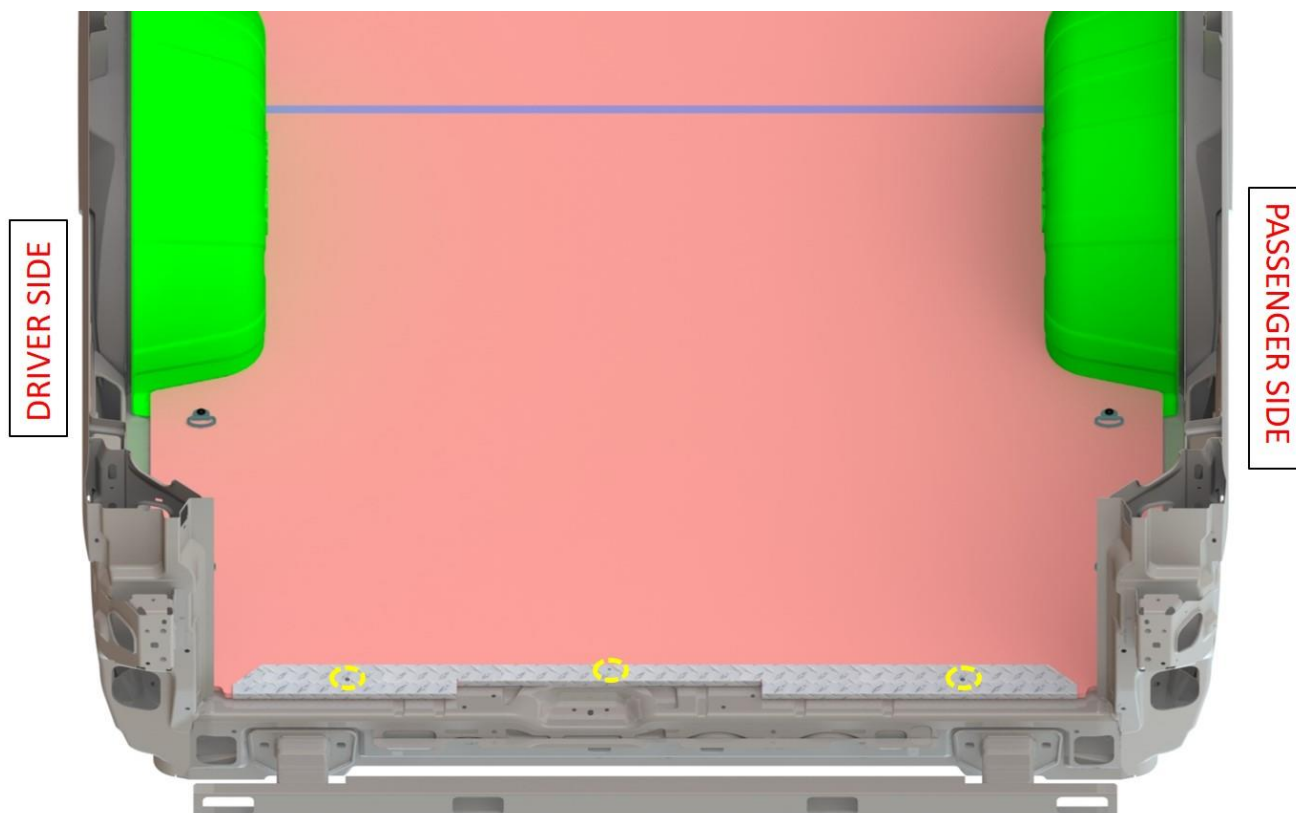
Note: The position of Pan-Head Screws is highlighted in Yellow in the image below.



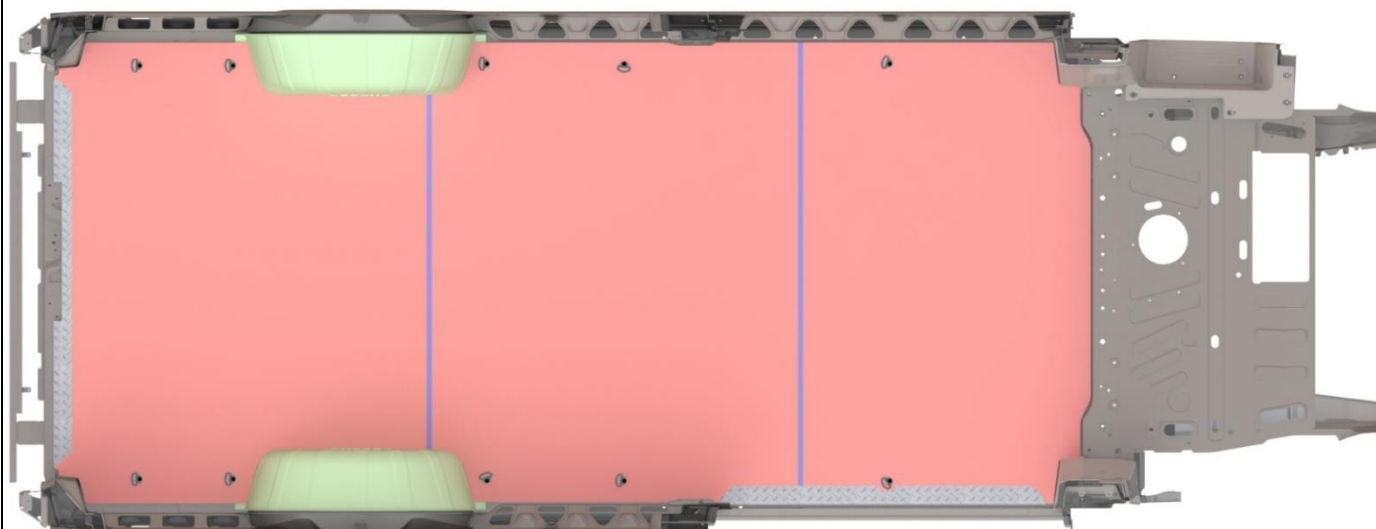
"Positioning and Fixing of the Side Sill"

2. Position the Rear Sill on Legend's Floor and fix it using 3 Pan-Head Screws as shown in the picture below.

Note: The position of Pan-Head Screws is highlighted in Yellow in the image below.



"Positioning and Fixing of the Rear Sill" This is view from Outside of Van- Viewing Towards Front



"Side and Rear Sills installed"

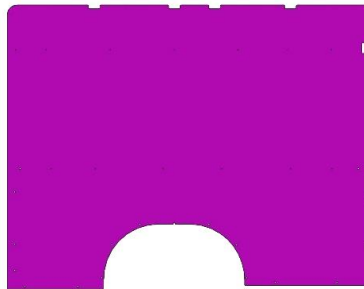
WALL LINERS

Parts & Hardware:

1. Driver Side's Front Wall Liner
(Qty=1)



2. Driver Side's Rear Wall Liner
(Qty=1)



3. Passenger Side's Wall Liner
(Qty=1)



4. Push-In Rivets
(Qty=42)



5. Screw Cap
(Qty=29)



6. Self-Tapping Screw
(Qty=29)

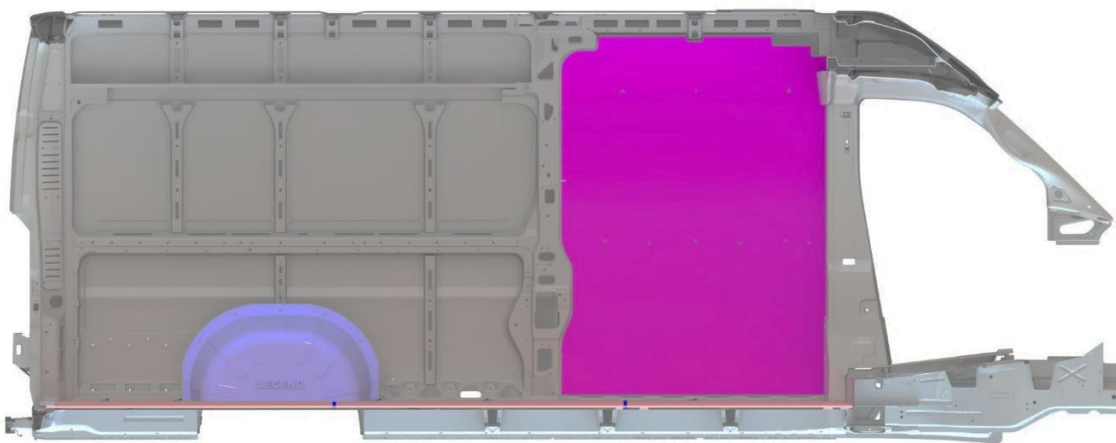


INSTRUCTIONS:

1. Bring the Driver Side's Front Wall Liner into the vehicle and align the holes on the Panel with the ones present on the vehicle's body. Fasten the panel using appropriate hardware, as instructed in the notes and picture below.

Notes:

- At the **Larger Holes** (approximate Diameter=0.40"), the Push-In Rivets are to be used.
- At the **Smaller Holes** (approximate Diameter=0.20"), the combination of Self-Tapping Screw and Screw cap is to be used.



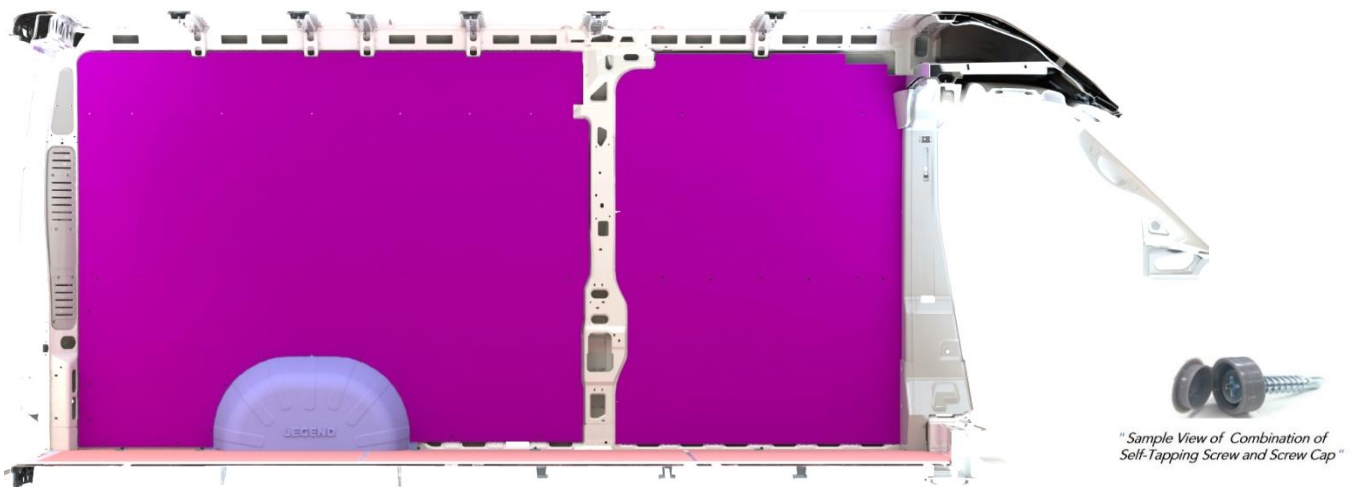
"Sample View of Combination of Self-Tapping Screw and Screw Cap"

"Driver Side's Front Wall Liner Installed" This is view from Inside of the vehicle- Viewing from Passenger Side

2. Bring the Driver Side's Rear Wall Liner into the Vehicle and align the holes on the panel with the ones present on the vehicle's body. Fasten the panel using appropriate hardware, as instructed in the notes and picture below.

Notes:

- If Legend's Wheel Well Covers are used, the Wall Liner will lay over the Top Flange of Wheel Well Cover.
 - ♦ Fastening holes present on the Wheel Well Cover will align with the holes present on the wall liner.
 - ♦ Wall Liner along with Wheel Well Cover will be fastened to the Van's body using the push-in rivets provided in the wall liner kit.
- Appropriate hardware of either Push-In Rivets or combination of Self-Tapping Screw and Screw Cap is used to fasten the Wall Liner depending on the diameter of the holes provided as fastening points.
 - ♦ At the **Larger Holes** (approximate Diameter=0.40 inches), the Push-In Rivets are to be used.
 - ♦ At the **Smaller Holes** (approximate Diameter=0.20 inches), the combination of Self-Tapping Screw and Screw Cap is to be used.



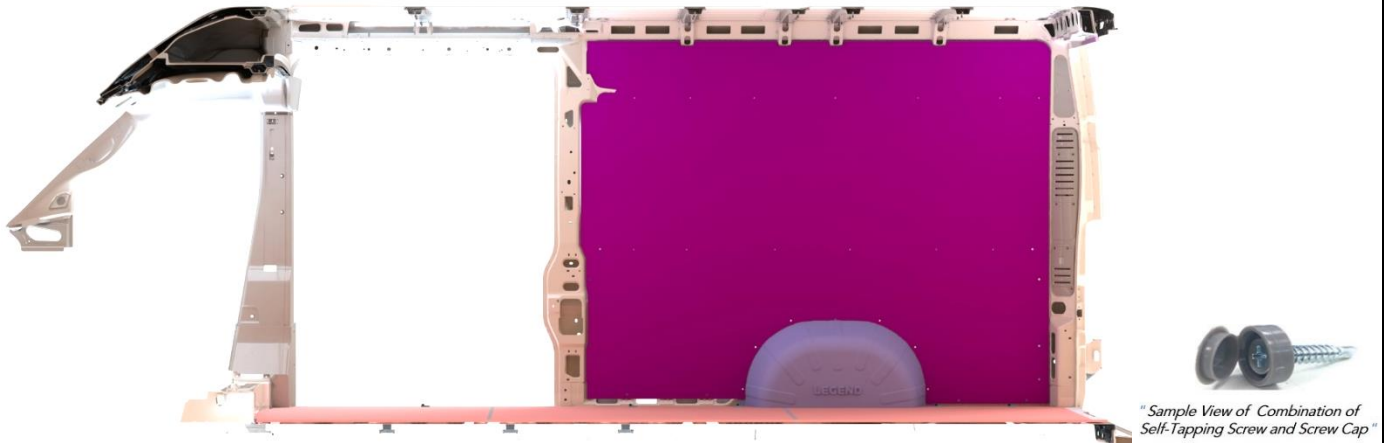
"Driver & Rear Side Front Wall Liner Installed" This is view from Inside of the Van- Viewing from Passenger Side

3. Bring the passenger side's wall liner into the vehicle and align the holes on the Panel with the ones present on the vehicle's body. Fasten the panel using appropriate hardware, as instructed in the notes and picture below.

Notes:

- If Legend's Wheel Well Covers are used, the Wall Liner will lay over the Top Flange of the Wheel Well Cover.
 - ♦ Fastening holes present on the Wheel Well Cover will align with the holes present on the Wall Liner.
 - ♦ Wall Liner along with Wheel Well Cover will be fastened to the van's body using the Push-In Rivets provided in the wall liner kit.
- Appropriate hardware of either Push-In Rivets or combination of Self-Tapping Screw and Screw cap is to be used to fasten the Wall Liner depending on the diameter of the holes provided as fastening points.

- ◆ At the **Larger Holes** (approximate diameter=0.40 inches), the Push-In Rivets are to be used.
- ◆ At the **Smaller Holes** (approximate diameter=0.20 inches), the combination of Self-Tapping Screw and Screw Cap is to be used.



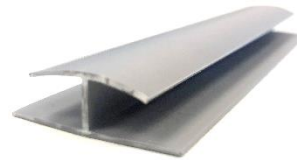
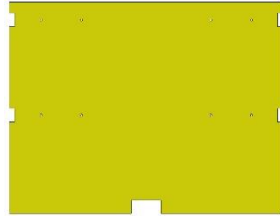
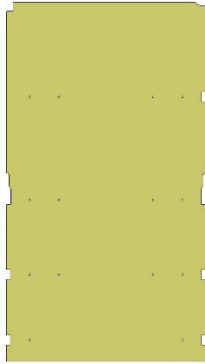
" Passenger Side Wall Liner Installed" This is view from Inside of the Van- Viewing from Driver Side

4. Installation of your Legend Wall Liners is now complete.

CEILING LINER

Parts & Hardware:

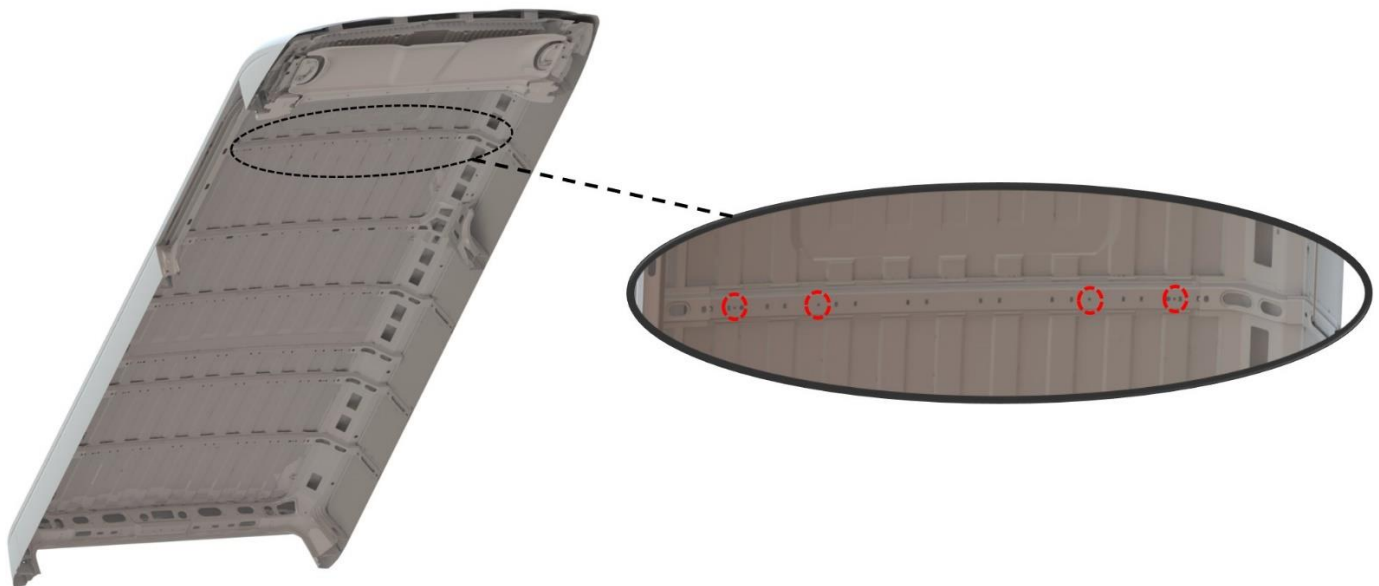
1. Front Ceiling Panel (Piece A) (Qty=1) 2. Rear Ceiling Panel (Piece B) (Qty=1) 3. Ceiling Joiner Strip (Approx. Length-55.95") (Qty=1) 4. Push-In Rivets (Qty=22)



INSTRUCTIONS:

1. Position and align the Front Ceiling Panel with the holes present on the Cross Beam of Vehicle's Roof as per the below notes, and fasten it using 14 Push-In Rivets provided.

Note: Location of holes to be used for Push-In rivets is highlighted in **red**, in the below picture for one of the Cross Beams of the vehicle. The holes located at similar location are to be used as fastening points for the remaining Cross Beams.



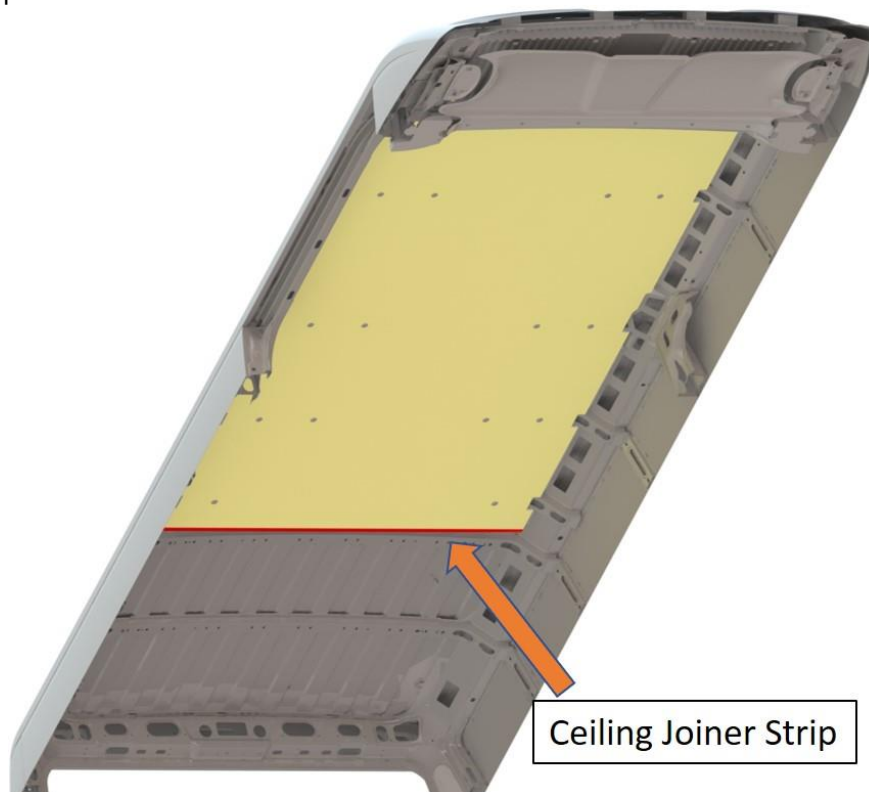
"Location of Fastening Points in the Cross-Beams" This View is from Inside of the Van



"Positioning and Fixing of the Front Ceiling Panel" This View is from Inside of the Van

2. Install the Ceiling Joiner strip at the edge of the front panel, that is towards rear of the van as shown in the picture below.

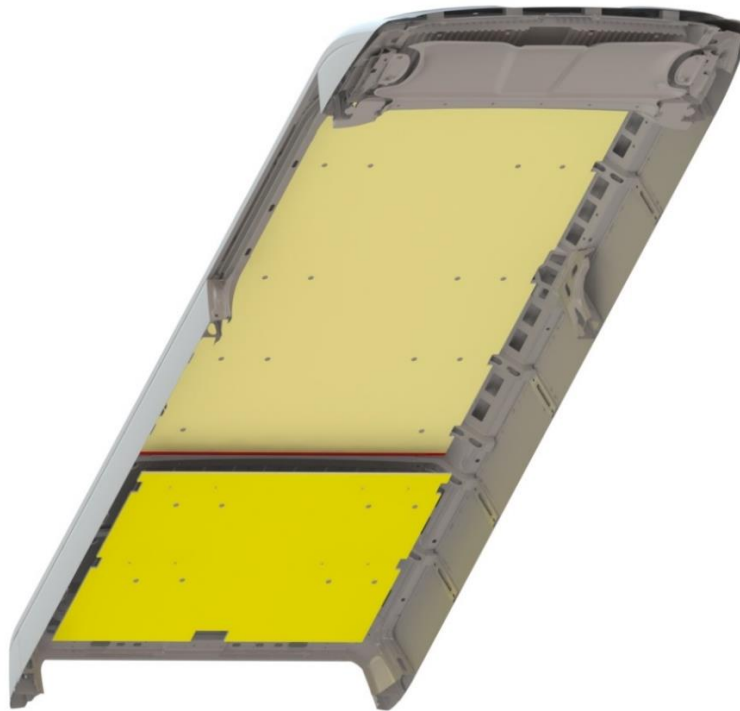
Note: Joiner Strip is shown in Red color.



Ceiling Joiner Strip

"Installation of the Ceiling Joiner Strip" This View is from Inside of the Van

3. Position and align the rear ceiling panel with the holes present on cross beams of vehicle's roof.
Note: The rear ceiling panel should first be aligned with joiner strip installed in step # 2, and then the holes on the ceiling panel should be aligned with the holes present on the vehicle's roof cross beams.



"Positioning of the Rear Ceiling Panel" This View is from Inside of the Van

4. Fasten the Rear Ceiling Panel using Push-In rivets at the 8 fastening points present on the panel. This completes the installation of your Legend Ceiling Liner Kit.

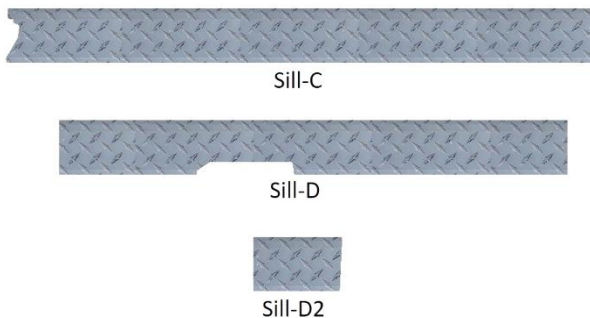


"Front & Rear Ceiling Panels Installed" This View is from Inside of the Van

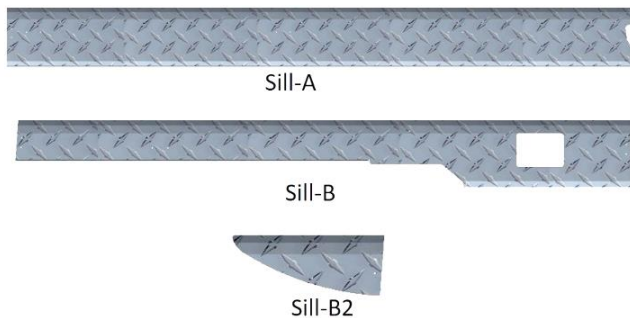
TOP SILLS KIT

Parts & Hardware:

1. Three Piece Driver Side Sill
(Qty=1 Each)



2. Three Piece Passenger Side Sill
(Qty=1 Each)



3. Top Sill Joiner Plate
(Qty= 4)



4. Pan-Head Screws
(Qty=48)

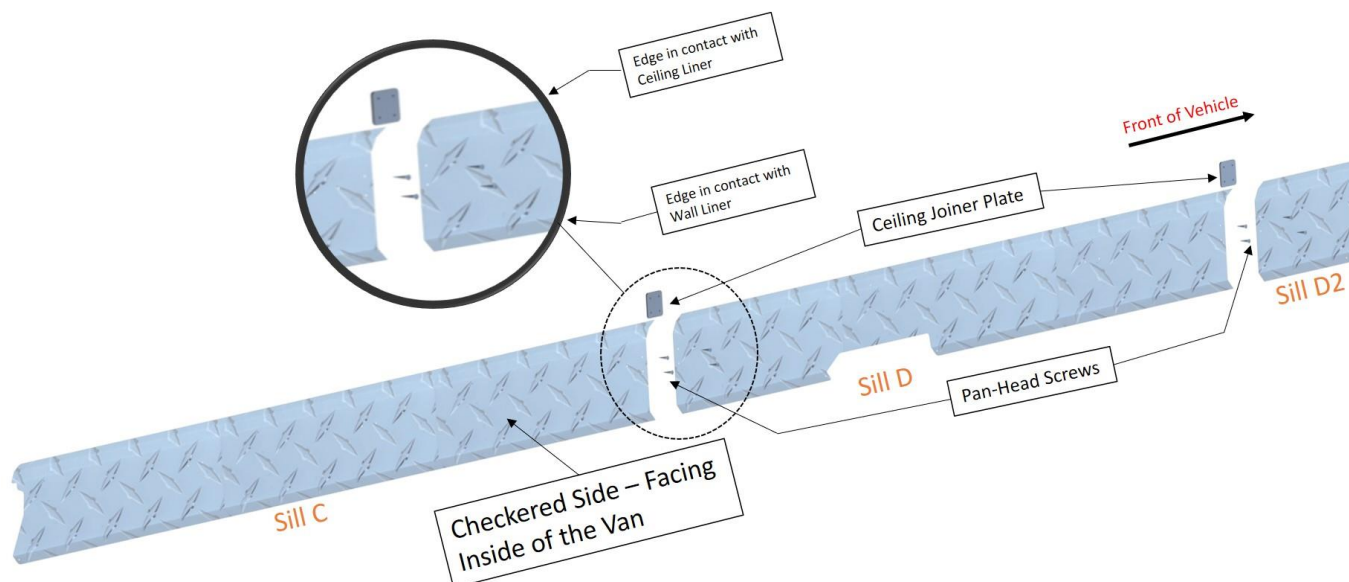


INSTRUCTIONS:

Note: Assembly of the Top Sils is to be done outside of the Van before installing it in the Van.

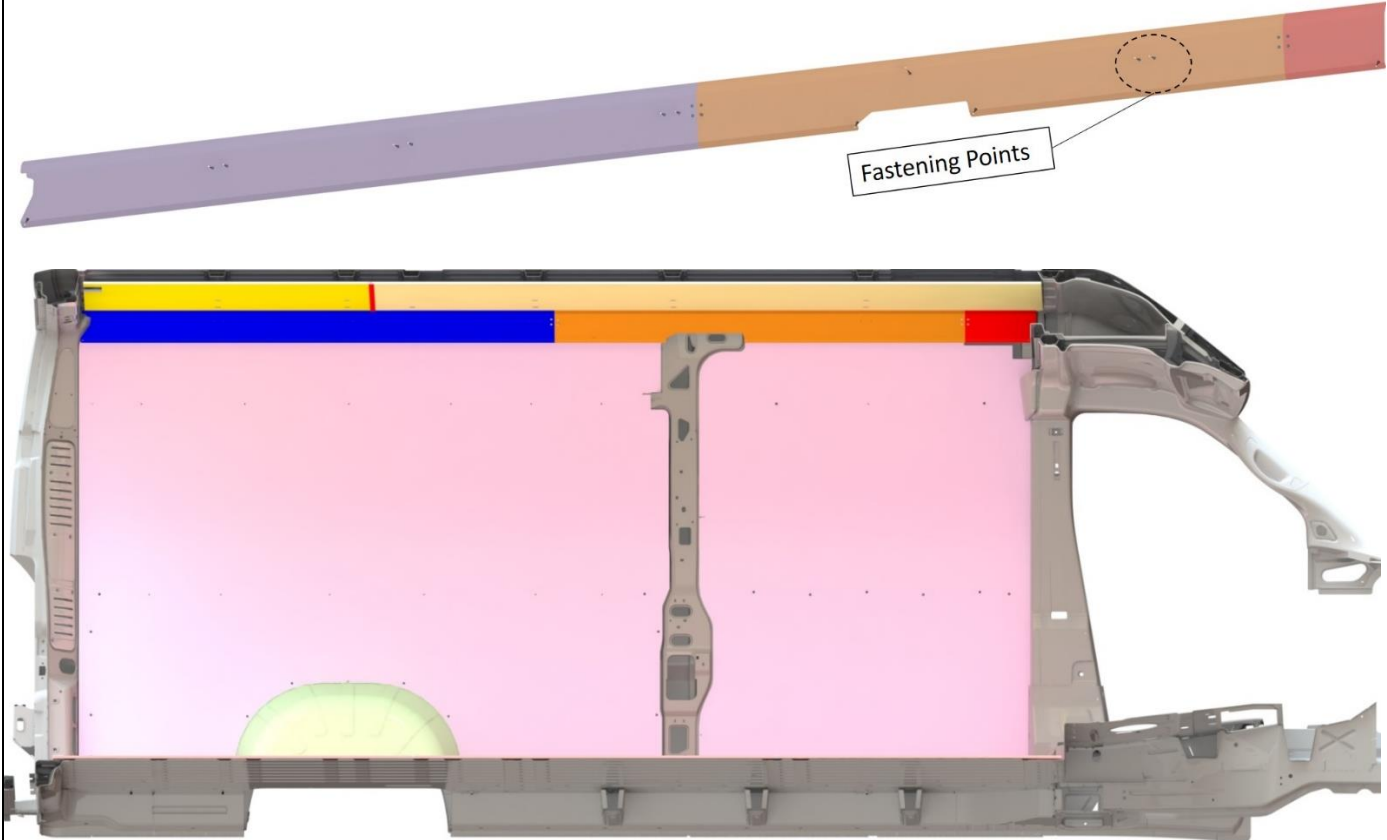
1. Arrange and assemble the Three Sils (C,D&D2) of the Driver Side using Two (2) Top Sill Joiner Plates and Eight (8) Pan-Head Screws in the order as shown in the image below.

Note: Sill D2 will not be used IF Air-Bag Foam/Roll-Over foam block is present behind the Head Liner (near the B-Pillar).



2. Bring the assembled Driver Side Sill inside the vehicle and fasten it using the Pan-Head Screws with checkered side facing towards the Inside of the Van's Cargo Area.

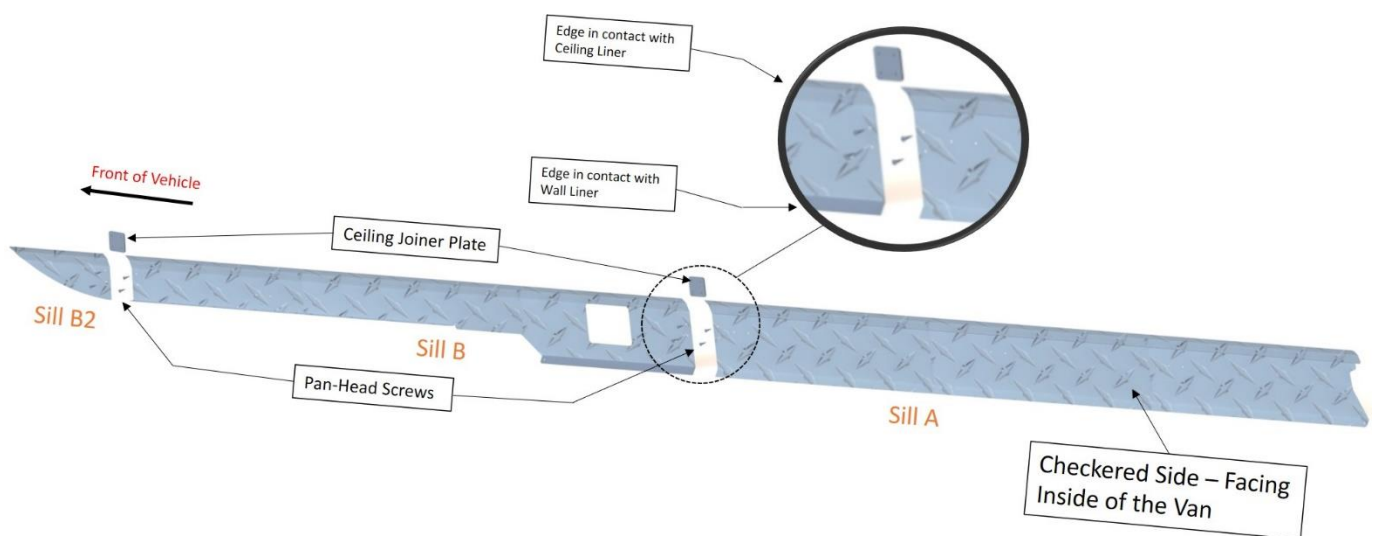
Note: For the purpose of identification, sills are shown in different colors than original. Location of fastening points are highlighted in the image below.



"Driver Side Top Sills Assembled" This is view from inside the vehicle when Viewing from Passenger Side

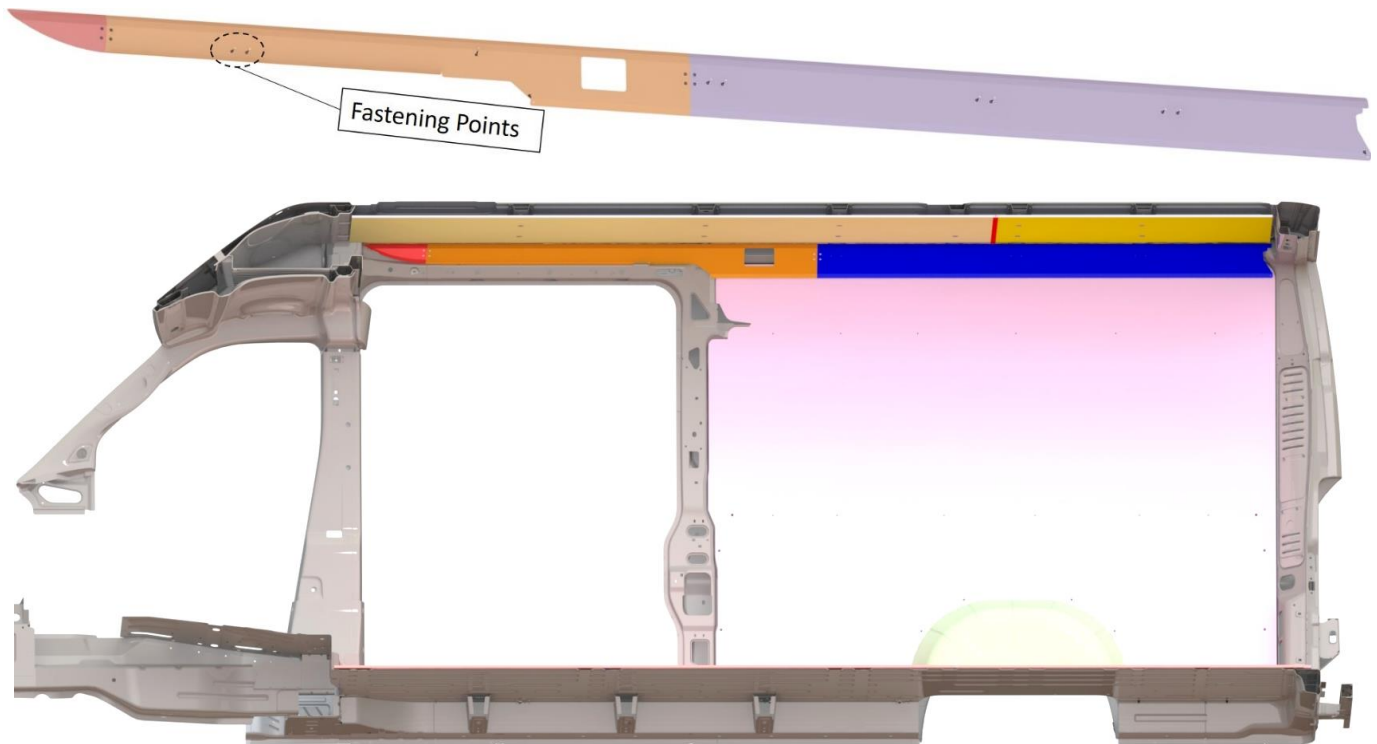
3. Arrange and assemble the Three Sills (A,B&B2) of the Passenger Side using Two (2) Top Sill Joiner Plates and Eight (8) Pan-Head Screws in the order as shown in the image below.

Note: Sill B2 will not be used IF Air-Bag Foam/Roll-Over foam block is present behind the Head Liner (near the B-Pillar).



4. Bring the assembled Passenger Side Sill inside the vehicle and fasten it using the Pan-Head Screws with Checkered Side Facing towards the inside of the Van's Cargo Area.

Note: For the purpose of identification, sills are shown in different colors than original. Location of fastening points are highlighted in the image below.



"Passenger Side Top Sills Installed" *This is view from inside the vehicle when Viewing from Passenger Side*

DOOR LINERS

Parts & Hardware:

1. Driver Side's Rear Door Liner
(Qty=1)



2. Passenger Side's Rear Door Liner
(Qty=1)



3. Passenger Side Sliding Door's Liner
(Qty=1)



4. Push-In Rivets
(Qty=16)



5. Screw Cap
(Qty=33)



6. Self-Tapping Screw
(Qty=33)

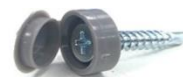


INSTRUCTIONS:

1. Bring the Driver's Side Rear Door Liner into the vehicle, align the holes on Panel with the ones present on vehicle's body. Fasten the panel using the appropriate hardware, as instructed in the notes and picture below.

Notes:

- Appropriate hardware of either Push-In Rivets or combination of Self-Tapping Screw and Screw Cap is to be used to fasten the Door Liner depending on the diameter of the holes provided as fastening points.
 - ◆ At the **Larger Holes** (approximate Diameter=0.40 inches), the Push-In Rivets are to be used.
 - ◆ At the **Smaller Holes** (approximate Diameter=0.20 inches), the combination of Self-Tapping Screw and Screw Cap is to be used.



"Sample View of Combination of Self-Tapping Screw and Screw Cap"

"Driver's Side Rear Door Liner Installed" This is view from Inside of the vehicle- Viewing from Front towards the Rear Doors

2. Bring the Passenger's Side Rear Door Liner into the Vehicle, align the holes on panel with the ones present on vehicle's body. Fasten the panel using the appropriate hardware, as instructed in the notes and picture below.

Notes:

- Appropriate hardware of either Push-In Rivets or combination of Self-Tapping Screw and Screw Cap is to be used to fasten the Door Liner depending on the diameter of the holes provided as fastening points.
 - ♦ At the **Larger Holes** (approximate Diameter=0.40 inches), the Push-In Rivets are to be used.
 - ♦ At the **Smaller Holes** (approximate Diameter=0.20 inches), the combination of Self-Tapping Screw and Screw Cap is to be used.



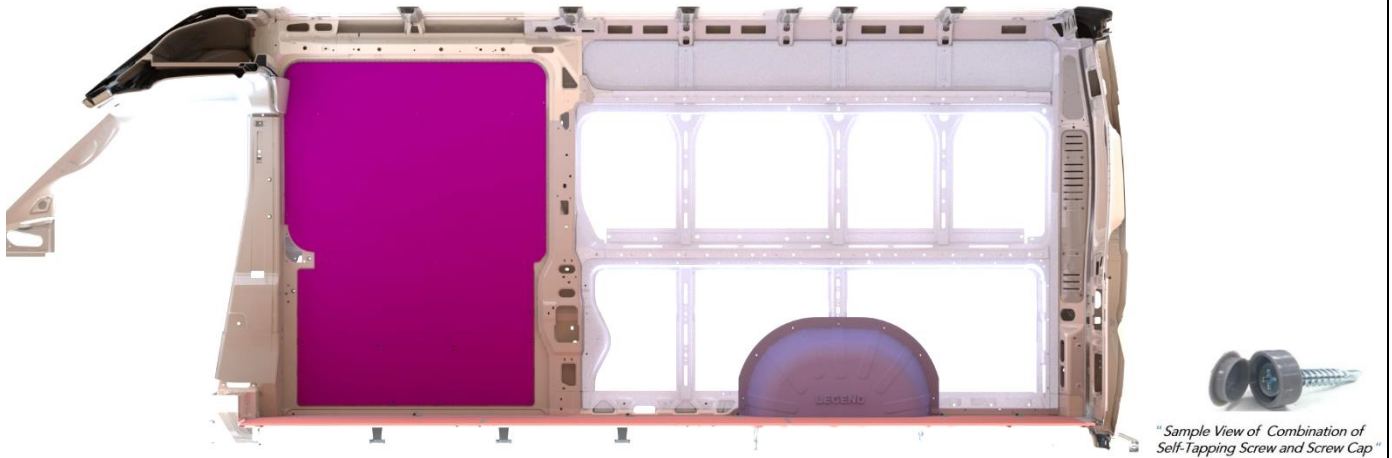
" Sample View of Combination of Self-Tapping Screw and Screw Cap "

" Driver & Rear Side Front Wall Liner Installed" This is view from Inside of the Van- Viewing from Front towards the Rear Doors

3. Bring the Passenger's side Sliding Door Liner into the vehicle, align the holes on Panel with the ones present on vehicle's body. Fasten the panel using the appropriate hardware, as instructed in the notes and picture below.

Notes:

- Appropriate hardware of either Push-In Rivets or combination of Self-Tapping Screw and Screw cap is to be used to fasten the Door Liner depending on the diameter of the holes provided as fastening points.
 - ♦ At the **Larger Holes** (approximate diameter=0.40 inches), the Push-In Rivets are to be used.
 - ♦ At the **Smaller Holes** (approximate diameter=0.20 inches), the combination of Self-Tapping Screw and Screw Cap is to be used.



"Passenger Side Sliding Door Liner Installed" This is view from Inside of the Van- Viewing from Driver's Side towards Passenger Side

4. Installation of your Legend Door Liners is now complete.